



Version 1.1a

Revision Date: January 13, 2003

PrintTalk is a consortium of print industry professionals seeking to provide an open XML standard to communicate business information used in the Graphic Arts industry.

Limitation of Liability

Copyright (C) 2000-2003 PrintTalk

Permission is hereby granted, free of charge, to any person obtaining a copy of this Implementation and associated documentation files (the "Implementation"), to exploit the Implementation without restriction, including without limitation the rights to use, copy, modify, merge, publish, distribute, and/or sublicense, copies of the Implementation, and to permit persons to whom the Implementation is furnished to do so, subject to the following conditions:

The above copyright notice and this permission notice shall be included in all copies or any material portion of the Implementation.

The Implementation is provided "as is", without warranty of any kind, express, implied, or otherwise, including but not limited to the warranties of merchantability, fitness for a particular purpose and noninfringement. In no event shall PrintTalk or the Secretariat or any other Member or Supporter be liable for any claim, damages or other liability, whether in an action of contract, tort or otherwise, arising from, out of, or in connection with the Implementation or the use or other exploitation thereby. By deploying the Implementation, you hereby agree to defend, indemnify and hold harmless PrintTalk and the Secretariat from and against any and all third party claims, damages, losses, costs, expenses, obligations, liabilities, actions, suits (including reasonable attorney's fees and expenses) that were caused by, resulted from, or otherwise arising from or related to, your deployment of the Implementation (including, without limitation, claims of intellectual property infringement or misappropriation).

Except as contained in this notice, the name of "PrintTalk" shall not be used in advertising or otherwise to promote the use or other dealings in this Implementation without prior written authorization from the PrintTalk.

JDF is the product of CIP4, and the most current specification is available at www.cip4.org

For cXML license agreement information, please see <http://www.cxml.org/home/license.asp>

The most current PrintTalk information and standard are available at www.PrintTalk.org

Table of Contents

1 Introduction	4
1.1 Intended Audience	4
2 Business Objects	5
3 Format Structure	7
3.1 PrintTalk Header Details	8
3.2 PrintTalk Request Details	10
3.2.1 Abstract Business Object	10
3.2.2 RFQ	11
3.2.3 Quote	11
3.2.4 Purchase Order	12
3.2.5 Invoice	12
3.2.6 Confirmation, Cancellation, Refusal	12
3.2.7 OrderStatusRequest	13
3.2.8 OrderStatusResponse	13
3.2.10 ProofApprovalResponse	14
3.3 Description of JDF	14
4 PrintTalk Workflow	16
4.1 Workflow Diagram	19
4.2 Usage of the various IDs	20
Example A – “Learn to Fly” mailer	22
Example B – “Bible”	28
Example C – “Sunrise PurchaseOrder”	38
Example D – Collaboration scenario	42

1 Introduction

PrintTalk is an XML standard that provides a single format for printers to collaboratively communicate business transactions and print specifications with their buyers and among themselves. Print industry professionals from eCommerce companies, print Business Management Systems, printers, and print equipment manufactures contributed to the design of PrintTalk.

The PrintTalk standard embraces use of the Job Definition Format (JDF) and Commerce eXtensible Markup Language (cXML). The group's work has been recognized as an implementation of the JDF standard, and its work is embedded within the 1.1 release of JDF. By incorporating PrintTalk, the JDF intent list has been enhanced to provide a richer descriptive capability. While JDF describes the piece to be printed, PrintTalk specifies the external communication of business processes between printer and buyer. For details about JDF, see www.cip4.org.

The PrintTalk interface specification is distributed free of any license fees or royalties, in order to address the need for end-to-end connectivity in the printing industry.

The following pages describe the philosophy used to develop the specification and the business objects that make up PrintTalk: *Request for Quote, Quote, Purchase Order, Order Confirmation, Cancellation, and Refusal* constitute the initial PrintTalk release. Detailed examples and discussions of the other remaining business objects (*Order, Status Request, Order Status Response, Proof Approval Request, Proof Approval Response, and Invoice*) will follow in subsequent releases.

1.1 Intended Audience

While most print industry professionals will find sections of this specification interesting; our primary goal is to describe the PrintTalk protocol to programmers who wish to implement the PrintTalk interface specification within their software products. A working knowledge of XML and familiarity with JDF is required to fully understand the scope of implementing.

2 Business Objects

The following table lists the business objects supported by PrintTalk. Each object corresponds to a business transaction used in the commercial print industry. The list will expand as the PrintTalk specification grows to support other transactions and new industry areas. The first column lists the business transaction name, the second its description and use, the third defines the object which this object can refer to. "None" means that the object can be originated without responding to any other object. The fourth column describes the relative flow from Buyer to Printer. In some cases, the transaction will be used bi-directionally.

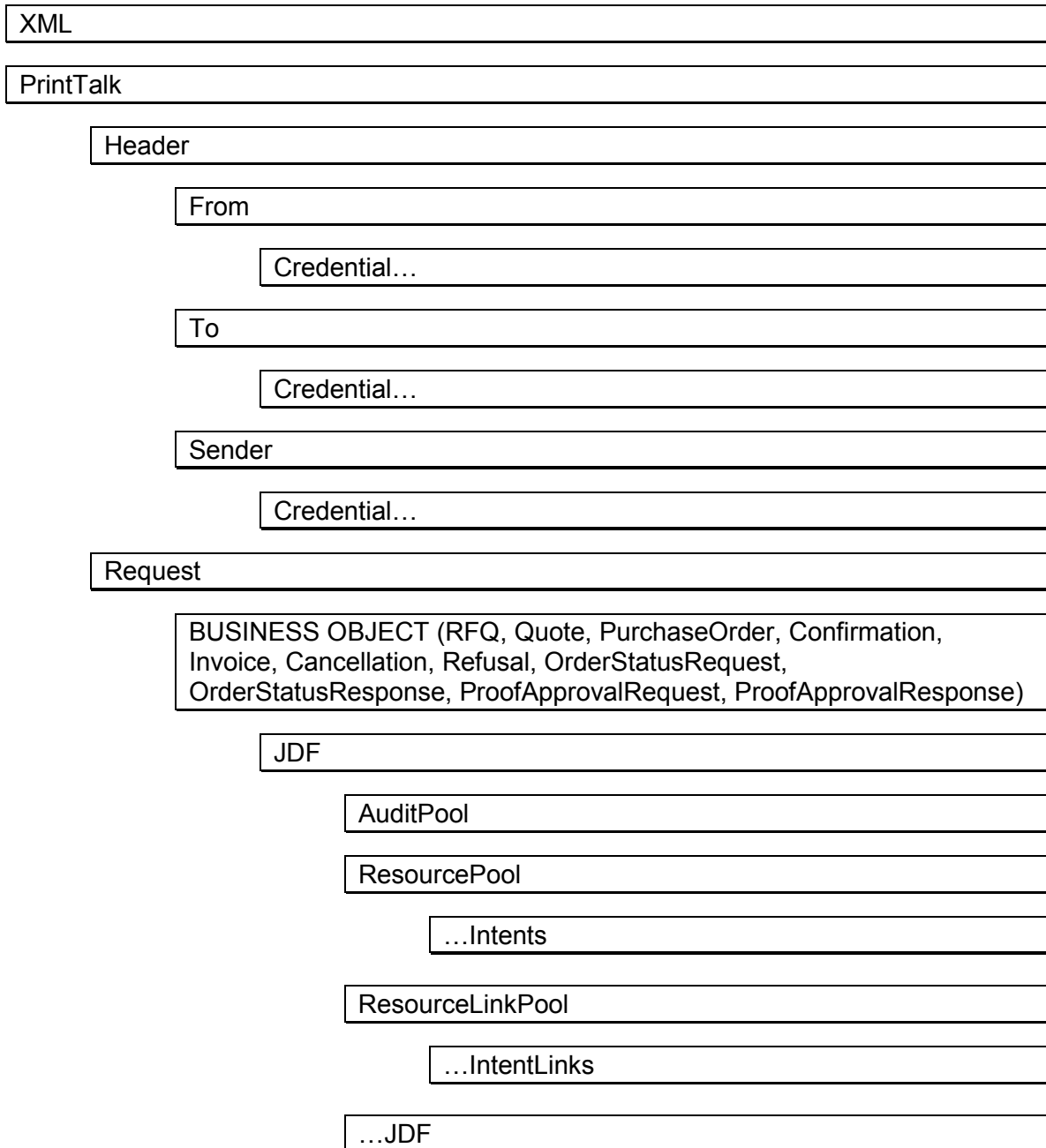
Business Transaction	Description	References	Flow
1. Request for Quote (RFQ)	Initiated by a buyer to a print supplier. It may instigate a new product process or it may supersede an existing RFQ. The focus of a RFQ is to convey the intention of the buyer clearly, in an unambiguous way to the print supplier. A complex RFQ may contain options that specify several types of acceptable materials or methods required by the buyer. It may contain other options that require the print estimator to generate more than one quoted price in the response. The Change Order and Request for Re-quote variations are included within Request for Quote.	None, Quote, Confirmation	B→P
2. Quote	Normally sent in response to a RFQ. The quote may contain very detailed information about the printing processes intended to create the product defined by the RFQ or it may contain only basic price and billing information. As with traditional quotes, providing the buyer with detailed information lessens the chance of a misunderstanding. The Re-quote and Change Order Quote variations are included within Quote. A Quote may supersede an existing Quote before the Print Buyer has answered with a RFQ or an Order.	RFQ, PO, Confirmation	B←P
3. Purchase Order	Typically sent as a response to a quote, but may be the initial document in a well-defined buyer / print supplier relationship or when ordering finished goods items. The Change Order variation is included within Purchase Order. An order may supersede an existing Order prior to the Print Provider	None, Quote, Confirmation	B→P

	having confirmed it.		
4. Order Confirmation	Sent by the print supplier to the buyer acknowledging receipt of the purchase order. It may contain information about expected due dates and final pricing that were undetermined at the time of the quote.	PO	B←P
5. Cancellation	Cancels a complete job. If only parts of a job should be cancelled, one must send a new RFQ, Quote, or PO. In case of canceling parts of a confirmed order the Change Order variations of these Business Objects must be sent.	RFQ, Quote, PO, Confirmation	B↔P
6. Refusal	Used to explicitly decline a Business Object sent by the counter party. Alternatively, the non-accepted Business Object expires.	RFQ, Quote, PO	B↔P
7. Order Status Request	Generated anytime one party requests status from another party.	Confirmation	B↔P
8. Order Status Response	An <i>Order Status Response</i> can be sent as a response to an <i>Order Status Request</i> or it can be sent automatically.	Confirmation, Order Status Request	B↔P
9. Proof Approval Request	Provides a transport for soft proofing from supplier to buyer. This may contain MIME data or a URL where the proof is located.	Confirmation	B←P
10. Proof Approval Response	Contains buyer's approval or denial of a proof.	Proof Approval Request	B→P
11. Invoice	Typically sent once the job is shipped, but can also be sent several times, when certain milestones during production are reached. May include additional charges or discounts.	Confirmation, Cancellation	B←P

3 Format Structure

The format most of the PrintTalk implementation can simply be described as JDF with a cXML wrapper around it (and a little PrintTalk in between). Just like cXML, the top two nodes are Header and Request. The Header concept is taken directly from cXML. The Header identifies the parties involved in this correspondence. The Request node contains one (and only one) Business object.

The following pages will provide a detailed explanation of each node. Here's a high level view of the PrintTalk structure:



3.1 PrintTalk Header Details

XML

```
<?xml version="1.0" encoding="utf-8"?>
```

Standard XML Header

PrintTalk

```
<PrintTalk version="1.1" payloadID="107778" timestamp="2001-02-01T22:39Z">
```

Name	Data Type	Description
<i>version</i>	String	The version of PrintTalk. The current release is 1.1
<i>payloadID</i>	String	(From cXML): A unique number with respect to space and time, used for logging purposes to identify documents that might have been lost or had problems. This value should not change for retry attempts.
<i>timestamp?</i>	TimeInstant	(From cXML): The date and time the message was sent, in ISO 8601 format. This value should not change for retry attempts.

Header

```
<Header>
  <To>
    <Credential domain="DNS">
      <Identity>pan-o-ramic.com</Identity>
    </Credential>
    <Credential domain="ECompany.com">
      <Identity>PeterPan</Identity>
    </Credential>
    <Credential domain="DUNS">
      <Identity>93009388</Identity>
    </Credential>
  </To>
  <From>
    <Credential domain="DNS">
      <Identity>AnExcellentPrinter.com</Identity>
    </Credential>
    <Credential domain="ECompany.com">
      <Identity>Polkadot</Identity>
    </Credential>
    <Credential domain="DUNS">
      <Identity>3040392</Identity>
    </Credential>
  </From>
  <Sender>
    <Credential domain="DNS">
      <Identity>ECompany.com</Identity>
      <SharedSecret>rosebud</SharedSecret>
    </Credential>
    <UserAgent>Print Buyer v.54.9</UserAgent>
  </Sender>
</Header>
```

This is an example of a Header taken from a Quote. In this example, the “To” party is a print buying company called PeterPan. The DUNS number uniquely identifies them. The “From” party is a print supplier. They too, are uniquely

identified by a DUNS number. The Sender is the party sending this document. In this case it's an eCommerce company. The SharedSecret element is a password known to (at least) the eCommerce company and the "To" party.

The content and exact format of this section will depend on the specific implementation. All parties should agree to the format prior to sending messages.

From

To

Sender

From cXML: The **From**, **To**, and **Sender** elements allow receiving systems to identify and authorize parties. The From and To elements in a document do not change. However, as the document travels to its destination, intermediate nodes (such as Ariba Network) may change the Sender element.

For example, in an RFQ, the *From* party is the buyer. The *To* party is the print supplier. In the subsequent Quote, those roles reverse. The *Sender* is always the party sending the message.

Credential

Credentials identify and authenticate the various parties involved in this transaction. Credentials are required in all 3 sections (From, To, Sender).

The entire Header section is taken directly from cXML. Refer to the *cXML Users Guide* available at www.cXML.org for more information.

3.2 PrintTalk Request Details

Request

The name “Request” is another element taken from cXML. A Request, in the case of PrintTalk, contains one (and only one) business object.

3.2.1 Abstract Business Object

In PrintTalk 1.1 we have created an abstract node called *BusinessObject* from which all other business objects inherit and optionally extend. Elements in the abstract *BusinessObject* are present in all business objects (RFQ, Quote, PurchaseOrder...)

The following table describes the contents of the abstract BusinessObject element. For a detailed description of the used data types see the JDF specification.

<i>Contents of the abstract BusinessObject element</i>		
Name	Data Type	Description
<i>AgentID</i>	NMTOKEN	The unique identity of the user that “pushed the button” to send this document. Could be a buyer in an RFQ or an Estimator in a Quote.
<i>AgentDisplayName</i>	string	The display name of the user.
<i>RequestDate</i>	dateTime	Date/Time when this business object was sent.
<i>BusinessID</i>	NMTOKEN	A unique identifier for this document.
<i>BusinessRefID?</i>	NMTOKEN	Unique identifier (BusinessID) of the document (if any) for which this document is a response. For example, the BusinessRefID for a Quote would have the BusinessID of the RFQ that it was responding to.
<i>AuxID?</i>	NMTOKEN	Optional item used as a reference by the sender. AuxIDs can be used e.g. to carry a systems internal ID. Generally both parties should in prior agree on the semantics of this ID.
<i>DescriptiveName ?</i>	string	Display text for this Business Object
<i>Comment*</i>	telem	See JDF “Generic Element” for definition of comment element.

Each individual Business Object within PrintTalk inherits all of the attributes and elements of the abstract BusinessObject. Additionally, each of these extends the abstract for individual items unique to that Business Object. The following sections show each Business Object and the additional elements specific to it.

3.2.2 RFQ

<i>Additional Contents of the RFQ element</i>		
Name	Data Type	Description
<i>Currency?</i>	NMTOKEN	Three-digit currency definition according to ISO 4217. For a RFQ, the specified Currency denotes the currency that should be used in the responding Quote.
<i>Estimate?</i>	boolean	For an RFQ, this value specifies whether the subsequent quote can be a binding amount or only an estimate for goods and services.
<i>Expires</i>	dateTime	Date/time when financial information becomes invalid.
<i>ReorderID?</i>	NMTOKENS	Whitespace-separated unique identifiers (BusinessID) of the PurchaseOrder-documents that are the basis for this (collected) RFQ. The RFQ is intended to lead to a re-order.
JDF	element	Description of the print product. A JDF node is mandatory for RFQs.
<i>ReplaceID?</i>	NMTOKEN	Identifier (BusinessID) of the document (if any) for which this document supersedes. A document can only supersede a previous one of the same type, i.e. an RFQ can only supersede RFQs. Additionally, superseding is only allowed as long as the RFQ to be replaced is pending, i.e. that the counter party has not yet answered.

3.2.3 Quote

<i>Additional Contents of the Quote element</i>		
Name	Data Type	Description
<i>Currency?</i>	NMTOKEN	Three-digit currency definition according to ISO 4217 Identifies the currency that this Quote uses.
<i>Estimate?</i>	boolean	In a Quote, a value of "False" means that this Quote is a binding amount. A value of "True" means that it's only an estimate for goods and services.
<i>Expires</i>	dateTime	Date/time when financial information becomes invalid.
<i>ReorderID?</i>	NMTOKENS	Whitespace-separated unique identifiers (BusinessID) of the PurchaseOrder-documents that are the basis for this (collected) Quote. In this scenario the Quote is the starting point of the negotiation and is intended to lead to a re-order.
JDF	element	Description of the print product. A JDF node is mandatory for Quotes.
<i>ReplaceID?</i>	NMTOKEN	Identifier (BusinessID) of the document (if any) for which this document supersedes. A document can only supersede a previous one of the same type, i.e. a Quote can only supersede Quotes. Additionally, superseding is only allowed as long as the Quote to be replaced is pending, i.e. that the counter party has not yet answered.

3.2.4 Purchase Order

<i>Additional Contents of the PurchaseOrder element</i>		
Name	Data Type	Description
<i>Currency ?</i>	NMTOKEN	Three-digit currency definition according to ISO 4217 Identifies the currency that this PO uses.
<i>Expires</i>	dateTime	Date/time when financial information becomes invalid.
<i>ReorderID ?</i>	NMTOKENS	Whitespace-separated unique identifiers (BusinessID) of the PurchaseOrder-documents that are the basis for this (collected) re-order, if the re-order is the starting point.
<i>ReplaceID ?</i>	NMTOKEN	Identifier (BusinessID) of the document (if any) for which this document supersedes. A document can only supersede a previous one of the same type, i.e. a PO can only supersede POs. Additionally, superseding is only allowed as long as the PO to be replaced is pending, i.e. that the counter party has not yet answered.
JDF	element	Description of the print product. The JDF element can be used to very detailed specify a to be printed product, but it can also be used to describe the ordering of finished goods in catalog-based environments.

3.2.5 Invoice

<i>Additional Contents of the Invoice element</i>		
Name	Data Type	Description
<i>Currency ?</i>	NMTOKEN	Three-digit currency definition according to ISO 4217 Identifies the currency that this Invoice uses.
<i>Expires</i>	dateTime	Date/time when financial information becomes invalid.
JDF	element	Description of the print product enriched with detailed pricing and delivery information.

3.2.6 Confirmation, Cancellation, Refusal

These and the following business objects do not contain a JDF element. Consequently, they contain the JDF Contact element (see JDF specification for more details of this element).

<i>Additional Contents of the Confirmation, Cancellation, and Refusal elements</i>		
Name	Data Type	Description
Contact *	element	Detailed contact information about the company.

3.2.7 OrderStatusRequest

<i>Additional Contents of the OrderStatusRequest node</i>		
Name	Data Type	Description
Contact *	element	Detailed information about the company.
StatusRequest *	element	Individual status request description.

<i>Contents of the StatusRequest element</i>		
Name	Data Type	Description
<i>JobIDRef</i>	string	Reference to a JobID or JobPartID within the JDF node in the corresponding Purchase Order. If the value of this attribute is equal to that of the JobID of the top-level JDF node or if this value is not included, status information about the whole job is requested. If the value is equal to that of the JobPartID of a nested JDF node, status information about a certain part of the job is requested.

3.2.8 OrderStatusResponse

<i>Additional Contents of the OrderStatusResponse node</i>		
Name	Data Type	Description
Contact *	element	Detailed information about the company.
Status *	telem	Human-readable text for individual status description.

<i>Contents of the Status element</i>		
Name	Data Type	Description
<i>JobIDRef</i>	string	Reference to the requested part of the job. May be a reference to the JobID of the top-level JDF or to the JobPartID of a nested JDF node.
	text	Body of the status description.

3.2.9 ProofApprovalRequest

<i>Additional Contents of the ProofApprovalRequest node</i>		
Name	Data Type	Description
Contact *	element	Detailed information about the company.
ProofRequest *	element	Individual proof request description.

<i>Contents of the ProofRequest element</i>		
Name	Data Type	Description
<i>JobIDRef</i>	string	Reference to the JobID or JobPartID this proof corresponds to.
<i>ProofLocation ?</i>	URL	Identifies a remote target for the proof output. This can be either a soft or hard proofing target.
Comment*	telem	See JDF "Generic Element" for definition of comment element.

3.2.10 ProofApprovalResponse

Additional Contents of the ProofApprovalResponse node

Name	Data Type	Description
Contact *	element	Detailed information about the company.
ProofResponse *	telem	Human-readable text for individual proof response.

Contents of the ProofResponse element

Name	Data Type	Description
JobIDRef	string	Reference to the JobID or JobPartID this proof corresponds to.
Response	enumeration	Describes the overall result of the approval. Possible values are: <i>Approved</i> – everything is fine. <i>ApprovedWithEdits</i> – minor changes required, but it's ok. <i>Rejected</i> – major changes. New proof required.
	text	Body of the response description.

3.3 Description of JDF

JDF

```
<JDF ID="root" Type="Product" JobID="HDM20001124161007" Status="waiting" Version="1.1"
DescriptiveName="Learn to Fly seminar mailer --folded flyer"
xmlns="http://www.CIP4.org/JDFSchema_1_1">
```

There can be more than one JDF in a business object, but they will be nested below this JDF. Consequently, this JDF is referred to as the “JDF root node”. This node contains header information that a subsequent, lower JDF node would not contain.

AuditPool

```
<Created Author="JDFTool" TimeStamp="2001-02-01T1127-0800"/>
```

PrintTalk does not require the AuditPool section. This section is intended to provide information regarding the product or author generating this document.

NOTE: Items defined in the following sections are all covered extensively in the JDF 1.1 release available at <http://www.cip4.org>. For the purposes of PrintTalk, we will provide some general assumptions and rules that may help to clarify the PrintTalk implementation of JDF.

ResourcePool

According to JDF, the ResourcePool is basically the list of resources required to produce a certain item. For PrintTalk's purpose, the ResourcePool of the top-level JDF node should contain, besides the resources that make up the customer information, only the DeliveryIntent that describes how, when and where the desired product should be delivered to. If the specification of the product contains options, several DeliveryIntents may be specified with each describing one option. In the ResourcePool of the subsequent JDF node the desired product is contained as component as well as the corresponding intents specified by the buyer in the RFQ, and then later refined by the printer in the Quote and Order Confirmation. This ResourcePool may also contain components from subordinate JDF levels and other resources. A notable exception is the ordering of finished goods. These are described by components and have no Intents associated with them. Therefore these components need not be described in separate JDF nodes and can be added to the ResourcePool of the upper-most JDF node (see e.g. example C in the appendix).

See the JDF 1.1 documentation for more information on ResourcePool.

...Intent

The resources in the ResourcePool are defined using a series of intent elements. These elements are the basic actions and/or materials required to build an item.

The complete list of intents used by PrintTalk and JDF:

ArtDeliveryIntent	InsertingIntent
BindingIntent	LaminatingIntent
ColorIntent	LayoutIntent
PackingIntent	MediaIntent
DeliveryIntent	NumberingIntent
EmbossingIntent	ProductionIntent
FoldingIntent	ProofingIntent
HoleMakingIntent	ShapeCuttingIntent

See Chapter 7.1 in the JDF documentation for a complete list of the PrintTalk Intent Resources.

ResourceLinkPool

The ResourceLinkPool defines the relationship from one resource to another and the usage of each resource defined in the relative ResourcePool.

...IntentLinks

```

<ResourcePool>
  <FoldingIntent ID="Fold1" Class="Intent" Status="Available">
    <FoldingCatalog DataType="NameSpan" Preferred="F8-7" Priority="Required"/>
  </FoldingIntent>
  <Component DescriptiveName="flyer" ID="Item01" Class="Quantity"
    Status="Unavailable"/>
</ResourcePool>
<ResourceLinkPool>
  <ComponentLink rRef="Item01" Usage="output"/>
  <ComponentLink rRef="Item01flat" Usage="input"/>
  <FoldingIntentLink rRef="Fold1" Usage="Input"/>
</ResourceLinkPool>

```

In this example, the ResourcePool consists of one Component element that describes the output product for this JDF node and a FoldingIntent. The ResourceLinkPool has three items. In addition to a link to the resources of the ResourcePool there is a link to a component (**Item01flat**) that appears in the ResourcePool of a deeper JDF node. The implication in the ResourceLinkPool is that **Item01flat** is folded (**Fold1**) and the output is **Item01**. **Item01flat** and **Fold1** are both defined as *Usage="input"* because they are the resources consumed or used in this step. **Item01** is defined as *Usage="output"* because it is the resource created in this step.

CustomerInfo

The CustomerInfo is a container for customer-specific information like CustomerID, as well as contact information such as contact persons and addresses. This element usually is specified in the uppermost JDF node. For more information see the JDF specification.

4 PrintTalk Workflow

The workflow concept and presumptions are described in text below, with a detailed flow diagram on the following page showing the possible workflows using PrintTalk Business Objects. The diagram covers both the negotiation phase and the production phase and all possible loops that might occur.

RFQ

Usually the overall transaction starts with an RFQ. After the Print Buyer has sent the RFQ and while it is pending (i.e. the Print Provider has not yet answered on it), he or she can either cancel or supersede it. In case of a cancellation, the Print Buyer can either choose to stop the whole process or to continue by sending (later) a new RFQ or a PO (e.g. if there is already a Quote sent by the Print Provider that has not yet expired, i.e. the cancelled RFQ was in fact a Request for Re-Quote). If the Print Buyer supersedes the RFQ, he or she does so by just sending a new RFQ that replaces the pending one.

When a Print Provider has received an RFQ, he or she reviews it and either accepts or refuses it. A refusal may take place either in an active manner by sending a negative answer to the Print Buyer or passively by not answering and letting the RFQ expire.

Quote

If the Print Provider wants to accept the RFQ, he or she creates a Quote and sends it back to the Print Buyer. After the Print Provider has sent the Quote, he or she can similarly to the Print Buyer either cancel or supersede the Quote while it is pending. If the Quote has been cancelled and the process should go on, the Print Provider can send either a new Quote or a Confirmation, if there is a PO and the cancelled Quote was in fact a Re-Quote.

When a Print Buyer receives a Quote he also can either accept or refuse it. If he or she does not accept the Quote as it is, he or she can create a new RFQ called Request for Re-Quote. If the Print Buyer does not want to continue the negotiation, he or she can proactively send a refusal or do nothing and let the Quote expire.

PO

In case of accepting the Quote, the Print Buyer creates and sends a Purchase Order (PO). However a PO can also be the first object in a negotiation phase, especially if it is a Re-Order of a previously produced print product. Again, this business object can be cancelled or superseded once it is sent and while it is pending. If the PO has been cancelled and the process should continue, the Print Buyer can either send a new PO or he or she can send another RFQ to ask for a new Quote.

When a Print Provider has received the PO, he can either accept or refuse it. If he or she refuses it, he or she can send back another Quote called Re-Quote to let the process continue or he or she can stop the process by sending a refusal or letting the PO expire (although, the latter is not a very good business practice). However, if the PO does not alter from the Quote there are legal issues that prevent the Print Provider from refusing the PO.

If the Print Provider accepts the PO, he sends back a confirmation notice and the contract is finally established.

Change Order Process

Both parties can initiate a change order process. Either the Print Buyer sends a Change Order (CO) RFQ asking what the consequences would be for a certain change of the print product or he or she sends a straight Change Purchase Order (CPO). The Print Supplier may begin the change order process by sending a CO Quote, where he or she offers a possible or necessary change of the product. The negotiation of the change order is performed by the same business objects as described above – RFQ, Quote, PO, Confirmation, Cancellation, and Refusal. The contract, which both parties have agreed on before, is valid during the whole change order process. However the production of the print product may be halted. Only if there is a new agreement on a changed order (expressed by the new confirmation that the Print Provider sends), the old contract is replaced. If there is a refused, expired, or cancelled business object that terminates the change order process, the process has failed and production goes on as originally planned.

Production and Delivery

During the production phase interaction between both parties takes place not only by change order processes but also by sending Status and/or Proof Approval Requests/Responses. Invoices are sent from the Print Provider to the Print Buyer either after delivery of the product or at various milestones. Moreover both parties can cancel the whole process in the production phase, which generally leads to a final invoice due to the Print Provider's terms and conditions.

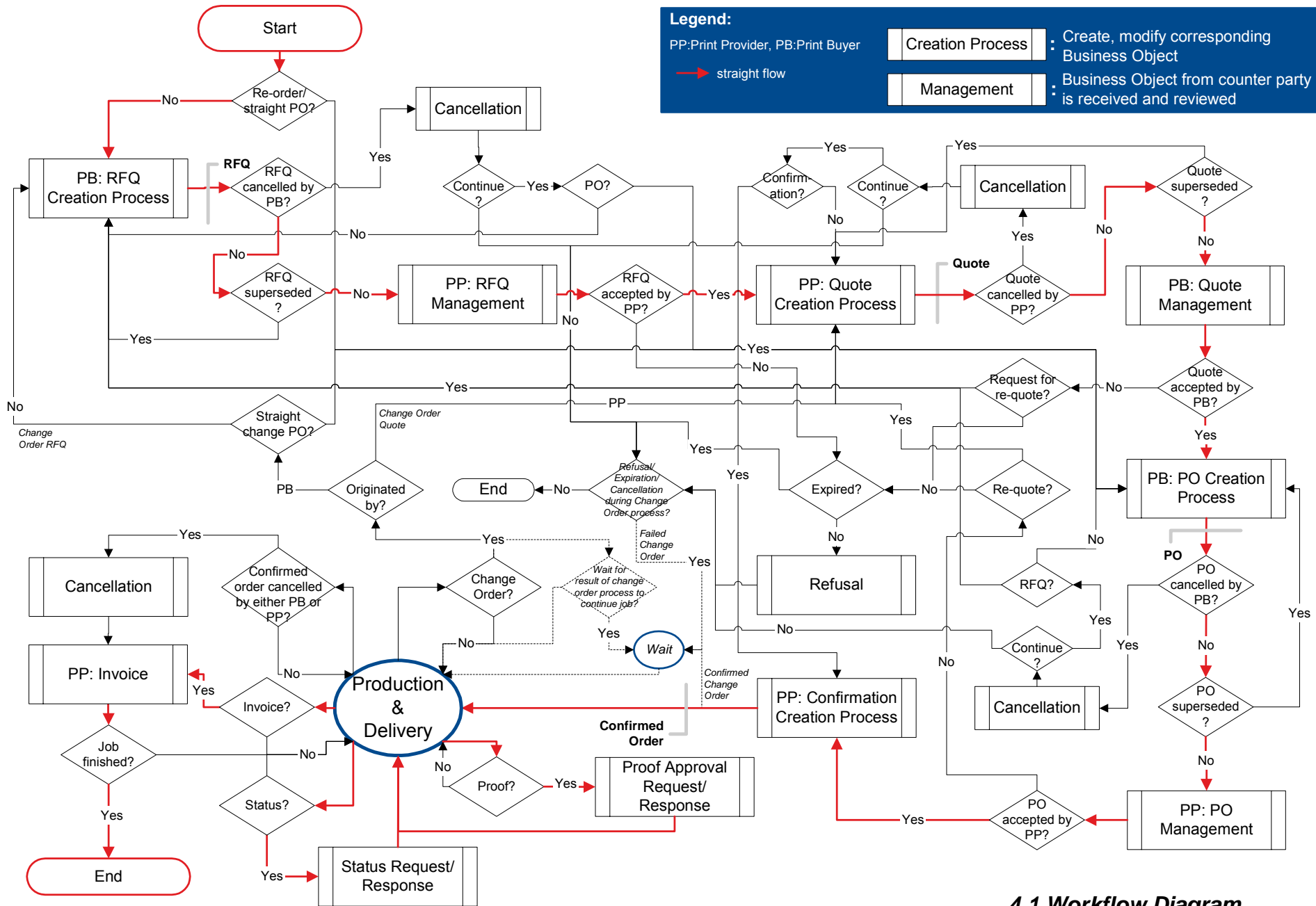
Legend:

PP:Print Provider, PB:Print Buyer

Creation Process : Create, modify corresponding Business Object

Management : Business Object from counter party is received and reviewed

straight flow



4.1 Workflow Diagram

4.2 Usage of the various IDs

To unambiguously define the semantics of the various IDs their usage in typical workflow scenarios is specified:

BusinessID and BusinessRefID:

- Original RFQ:
<RFQ BusinessID="RFQ_1">
- Quote:
<Quote BusinessID="Quote_1" BusinessRefID="RFQ_1">
Loop (optional):
 - Request for Re-Quote:
<RFQ BusinessID="RFQ_2" BusinessRefID="Quote_1">
 - Re-Quote:
<Quote BusinessID="Quote_2" BusinessRefID="RFQ_2">
- Purchase Order:
<PurchaseOrder BusinessID="PO_1" BusinessRefID="Quote_2">
Loop (optional):
 - Re-Quote:
<Quote BusinessID="Quote_3" BusinessRefID="PO_1">
 - Purchase Order:
<PurchaseOrder BusinessID="PO_2" BusinessRefID="Quote_3">
- Confirmation:
<Confirmation BusinessID="Confirmation_1" BusinessRefID="PO_2">

One of three Change Order Scenarios:

1. Change Order RFQ:
<RFQ BusinessID="CO_RFQ" BusinessRefID="Confirmation_1">
Quote:
<Quote BusinessID="Quote_4" BusinessRefID="CO_RFQ">
Purchase Order:
<PurchaseOrder BusinessID="PO_3" BusinessRefID="Quote_4">
Confirmation:
<Confirmation BusinessID="Confirmation_2" BusinessRefID="PO_3">
2. Straight Change Purchase Order:
<PurchaseOrder BusinessID="PO_3" BusinessRefID="Confirmation_1">
Confirmation:
<Confirmation BusinessID="Confirmation_2" BusinessRefID="PO_3">
3. Change Order Quote:
<Quote BusinessID="Quote_4" BusinessRefID="Confirmation_1">
This is the only exception where the BusinessRefID does not point to a Business Object that came from the counter party! This is due to the fact that the same party has placed two consecutive but different (no superseding) Business objects.
Purchase Order:
<PurchaseOrder BusinessID="PO_3" BusinessRefID="Quote_4">
Confirmation:
<Confirmation BusinessID="Confirmation_2" BusinessRefID="PO_3">

ReplaceID:

- Original RFQ:
<RFQ BusinessID="RFQ_1">
- Superseding RFQ:
<RFQ BusinessID="RFQ_2" ReplaceID="RFQ_1">

A ReplaceID may only be used to supersede a previously sent Business Object that has not been answered yet by the counter party.

ReorderID:

- Re-Order:

<PurchaseOrder BusinessID="PO_ID" ReorderID="old_PO_ID_1 old_PO_ID_2">

This ID is used to place re-orders of one or more previously sent (and confirmed) Purchase Orders.

Example A – “Learn to Fly” mailer

In this example, we are producing a folded mailer. This is basically a sheet of paper, printed, folded and delivered to two addresses.

JDF provides us with a very flexible mechanism for specifying shipment information. This item is shipped to 2 different locations so, 2 DropIntents are used. Here’s the basic outline of the delivery portion of the ResourcePool:

```

1 <Component> "4 Page folded Flyer" ID=Item011
2 <Company> "Pan-O-Ramic" ID=Company1
3 <Company> "Tinker Mailing" ID=Company2
4 <DeliveryIntent>
5   <DropIntent> Required 2002-07-26...
6     <CompanyRef> Company1
7     <DropItemIntent> Amount=10
8       <ComponentRef> Item01
9   <DropIntent> Required 2002-07-26...
10    <CompanyRef> Company2
11    <DropItemIntent> Amount=7990
12      <ComponentRef> Item01

```

Line 1 is the description of the shipped component.

Line 2 describes the first company to ship to

Line 3 describes the second company to ship to

Line 4 DeliveryIntent tag

Line 5 DropIntent with date / time required for first shipment

Line 6 CompanyRef pointing to the company for this shipment (Company1)

Line 7 DropItemIntent with amount to ship

Line 8 ComponentRef pointing to the component to ship (Item01)

Line 9 DropIntent with date / time required for second shipment

Line 10 CompanyRef pointing to the company for this shipment (Company2)

Line 11 DropItemIntent with amount to ship

Line 12 ComponentRef pointing to the component to ship (Item01)

The following page contains the original text RFQ from the customer. Key reference points are annotated with AA, BB, and CC... in the text and cross-referenced in the PrintTalk XML.

¹ In fact specified in a ResourcePool of a deeper JDF node level.

- Request for Quote -

Date: Today is 1 July 2002. **AA**

Printer: Polkadot Litho Inc. BB

ECommerce system: Ecompany Ltd. **CC**

Buyer:

Mary Martin **DD**
1929 Peter Pan Wy.
Island Drive, CA 90028
213-555-1212
mmartin@ pan-o-ramic.com

Description:

“Learn to Fly” seminar mailer **EE**

Quantity: 8,000 **FF** and addl. M **GG**
11”x17” Flyer **HH**, printed black plus 1PMS **II** on coated book **JJ**. Fold to 5.5”x8.5” **KK**, and ship to mail **LL** house (address below). Want 60 or 70#stock **MM**, but cannot exceed 1oz. for mail purposes **NN**.

OO Customer will furnish Quark files for the 4 pages, with cropped and scaled scans for halftones in Photoshop files.

Bleeds, solids, and reverses completed and in the files. **PP** Proof PDF file to Mary.

Files in Jul 23, and finished product must be posted via 1st class mail August 1. **QQ**

Deliver 10 samples to Mary, balance to: **LL**

Tinker Mailing **RR**
1234 Hurryup Ave.
Hawthorne, CA 90250
Attn: Wendy

(no underruns allowed, up to 5% overs accepted) **SS**

Quote required by end of business 5 July 2002. **TT**

“Learn to Fly” Example

```

<?xml version="1.0" encoding="utf-8"?>
<pt:PrintTalk xmlns:xsi="http://www.w3.org/2001/XMLSchema-instance" xmlns:pt="http://www.printtalk.org"
xmlns="http://www.CIP4.org/JDFSchema_1_1" xsi:noNamespaceSchemaLocation="printtalk.xsd" version="1.1"
payloadID="Christian 01 Jul 2002" timestamp="2002-07-01T22:39-08:00" >
  <!--version: This is the PrintTalk version; borrowed from cXML.-->
  <!--payloadID: This is transport unique ID of the message; borrowed from cXML.-->
  <!--AA timestamp: PrintTalk date/time taken from ISO 8601; the preferred representation is "complete (full date and
time)" and "extended (with punctuation)" with a time zone designation; borrowed from cXML.-->
  <pt:Header>
    <!--Header, Request structure borrowed from cXML.-->
    <pt:From>
      <!--The required credentials must be agreed upon by trading partners; here are some examples of what can be
done.-->
      <pt:Credential domain="DNS">
        <!--The originating organization identification within a public domain (Domain Name Service).-->
        <pt:Identity>pan-o-ramic.com</pt:Identity>
      </pt:Credential>
      <pt:Credential domain="ECompany.com">
        <!--The originating organization identification within a private domain (ECompany's private registry)-->
        <pt:Identity>PeterPan</pt:Identity>
      </pt:Credential>
      <pt:Credential domain="DUNS">
        <!--The originating organization identification within a public domain (Dun and Bradstreet registry).-->
        <pt:Identity>93009388</pt:Identity>
      </pt:Credential>
    </pt:From>
    <pt:To>
      <!--BB The required credentials must be agreed upon by trading partners; here are some examples of what can
be done.-->
      <pt:Credential domain="DNS">
        <!--The originating organization identification within a public domain (Domain Name Service).-->
        <pt:Identity>AnExcellentPrinter.com</pt:Identity>
      </pt:Credential>
      <pt:Credential domain="ECompany.com">
        <!--The originating organization identification within a private domain (ECompany's private registry)-->
        <pt:Identity>Polkadot</pt:Identity>
      </pt:Credential>
      <pt:Credential domain="DUNS">
        <!--The originating organization identification within a public domain (Dun and Bradstreet registry).-->
        <pt:Identity>3040392</pt:Identity>
      </pt:Credential>
    </pt:To>
    <pt:Sender>
      <!--CC The required credentials must be agreed upon by trading partners; here are some examples of what can
be done.-->
      <!--The Sender credential authenticate the message.-->
      <pt:Credential domain="DNS">
        <!--The originating organization identification within a public domain (Domain Name Service).-->
        <pt:Identity>ECompany.com</pt:Identity>
        <pt:SharedSecret>password</pt:SharedSecret>
        <!--The SharedSecret is part of the message authentication.-->
      </pt:Credential>
      <pt:UserAgent>Print Buyer v.54.9</pt:UserAgent>
      <!--The UserAgent is unique to the Sender element and identifies the software agent that generated the
message.-->
    </pt:Sender>
  </pt:Header>
  <pt:Request>
    <!--The Request element contains a single PrintTalk business document; borrowed from cXML.-->

```



```

<pt:RFQ AgentID="Lara" AgentDisplayName="Lara Garcia-Daniels" BusinessID="RFQ 8884" Currency="USD"
DescriptiveName="RFQ for simple job" Estimate="false" Expires="2002-07-05T17:00-08:00" RequestDate="2002-07-
01T22:39-08:00">
  <!--A PrintTalk Request for Quote document; the content of this element is independent of cXML-->
  <!--AgentID: The unique identity of the commerce system user that "pushed the button" to send this document.-
->
  <!--AgentDisplayName: The display name of the user.-->
  <!--BusinessID: A unique identifier for this document; opaque to the receiver.-->
  <!--Currency: For RFQ, preferred currency for quotes.-->
  <!--DescriptiveName: Human-readable description.-->
  <!--Estimate: For RFQ, whether a subsequent quote should be a casual "estimate" or formal "quote." -->
  <!--TT Expires: Date/time when financial information becomes invalid. -->
  <!--AA RequestDate: Date/time when business object was sent. -->
  <Comment Attribute="Expires">If you send the Quote until midnight of that day, it's also ok.</Comment>
  <JDF DescriptiveName="Learn to Fly seminar mailer" ID="root" JobID="HDM20002124161007"
ProjectID="HDM_Prod20001124161007" Type="Product" Status="Waiting" Version="1.1"
xmlns="http://www.CIP4.org/JDFSchemas_1_1">
  <!--A single JDF element is the only element content of an RFQ element.-->
  <!--Structure of a JDF node is defined by the JDF specification. However there is a best practice structure as
indicated in section 3.3 of this spec. Alternative JDF structures are permitted although not illustrated here.-->
  <!--EE DescriptiveName: Courtesy display text.-->
  <!--ID: An XML ID-->
  <!--JobID: sender's reference to a job.-->
  <!--ProjectID: sender's reference to a project.-->
  <!--Type: For RFQ, always "Product."-->
  <!--SettingsPolicy: indicates what happens, when unsupported settings are present.-->
  <!--status: For RFQ, always "waiting."-->
  <!--Version: JDF version.-->
  <!--xmlns: XML namespace.-->
  <AuditPool>
    <!--Not required by PrintTalk, may be used at the discretion of the document creator.-->
    <Created Author="Christian@heidelberg.com" TimeStamp="2002-07-01T1127+0100"/>
  </AuditPool>
  <CustomerInfo CustomerID="cu/4563-02" rRefs="Contact1">
    <ContactRef rRef="Contact1"/>
  </CustomerInfo>
  <ResourceLinkPool>
    <!--In the root JDF node only a DeliveryIntentLink for each of the independent alternatives that constitute
the request for quote; Usage = "Input."-->
    <DeliveryIntentLink rRef="Deliv1" Usage="Input"/>
  </ResourceLinkPool>
  <ResourcePool>
    <!--In the root JDF node any Resources required by the JDF structure rule like resources referenced in the
CustomerInfo, but including the required DeliveryIntents and from the ResourceLinkPool.-->
    <DeliveryIntent DescriptiveName="Delivery of samples to buyer, rest to mail house" ID="Deliv1"
Class="Intent" rRefs="Item01 Contact1 Contact2" Status="Available">
      <!--Status: All intent resources are "Available."-->
      <!--Other attribute values determined by JDF structure rules.-->
      <Overage DataType="NumberSpan" Priority="Required" Preferred="5">
        <!--SS Overage: Percentage by which actual count of delivered items may exceed ordered quantity.-->
      </Overage>
      <Underage DataType="NumberSpan" Priority="Required" Preferred="0">
        <!--SS Underage: Percentage by which actual count of delivered items may be less than ordered
quantity.-->
      </Underage>
      <Method DataType="NameSpan" Priority="Required" Preferred="1stClassMail">
        <!--QQ-->
      </Method>
      <Required DataType="TimeSpan" Priority="Required" Preferred="2002-07-26T09:30-08:00">
        <!--QQ-->
      </Required>
      <DropIntent>
        <ContactRef rRef="Contact1"/>
        <DropItemIntent Amount="10">
          <!--Amount: Count of items to be delivered.-->

```

```

    <!--Delivery is made to the Contact(Ref) with ContactTypes including "Delivery" found in this element,
or its parent, or its parent's parent.-->
    <ComponentRef rRef="Item01"/>
  </DropItemIntent>
</DropIntent>
<DropIntent>
  <ContactRef rRef="Contact2"/>
  <DropItemIntent Amount="7990" AdditionalAmount="1000">
    <!--FF LL-->
    <!--GG AdditionalAmount: A quote returned for this RFQ should include a price for additional
quantities of this amount.-->
    <ComponentRef rRef="Item01"/>
  </DropItemIntent>
</DropIntent>
</DeliveryIntent>
<Contact ID="Contact1" Class="Parameter" Status="Available" ContactTypes="Customer Delivery">
  <Address Street="1929 Peter Pan Wy." City="Island Drive" Region="CA" PostalCode="90028"
Country="United States" CountryCode="US"/>
  <Person JobTitle="Print Buyer" FirstName="Mary" FamilyName="Martin">
    <ComChannel ChannelType="Phone" Locator="1 213 555 1212"/>
    <ComChannel ChannelType="Email" Locator="mailto:mmartin@pan-o-ramic.com"/>
  </Person>
  <Company DescriptiveName="Customer: Pan-O-Ramic" ID="Company1" Class="Parameter"
Status="Available" OrganizationName="Pan-O-Ramic"/>
  <!--DD-->
</Contact>
<Contact ID="Contact2" Class="Parameter" Status="Available" ContactTypes="Delivery">
  <Address Street="1234 Hurry-up Avenue" City="Hawthorne" Region="CA" PostalCode="90250"
Country="United States" CountryCode="US"/>
  <Person FirstName="Wendy"/>
  <Company DescriptiveName="Mail fulfillment: Tinker Mailing" ID="Company2" Class="Parameter"
Status="Available" OrganizationName="Tinker Mailing">
    <!--RR-->
  </Company>
  <!--LL-->
</Contact>
</ResourcePool>
<JDF DescriptiveName="folded flyer" ID="Link0005" JobPartID="HDM20002124161007-folded"
Type="Product" Status="Waiting">
  <!--This element describes the folded flyer that is made up by the the flat, printed article; the child JDF
element makes the flat, printed article.-->
  <ResourceLinkPool>
    <ComponentLink rRef="Item01" Usage="Output"/>
    <ComponentLink rRef="Item01flat" Usage="Input"/>
    <FoldingIntentLink rRef="Fold1" Usage="Input"/>
  </ResourceLinkPool>
  <ResourcePool>
    <Component DescriptiveName="4-page folded flyer" ID="Item01" Class="Quantity" Status="Unavailable"
ComponentType="FinalProduct">
      <Comment Name="Instruction">NN Check that the weight of the finished piece does
not exceed 1oz. (28.3 grams) to qualify for U.S. postage rate.</Comment>
    </Component>
    <FoldingIntent ID="Fold1" Class="Intent" Status="Available">
      <FoldingCatalog DataType="NameSpan" Preferred="F8-7" Priority="Required">
        <!--KK Preferred: "F8-7" is an item from the folding catalog in the JDF specification.-->
      </FoldingCatalog>
    </FoldingIntent>
  </ResourcePool>
  <JDF DescriptiveName="flat flyer" ID="Link0006" JobPartID="HDM20002124161007-flat" Type="Product"
Status="Waiting">
  <!--This element describes the flat flyer and the intents that are used to describe it.-->
  <ResourceLinkPool>
    <ComponentLink rRef="Item01flat" Usage="Output"/>
    <ArtDeliveryIntentLink rRef="Art1" Usage="Input"/>
    <ColorIntentLink rRef="Color1" Usage="Input"/>
    <MediaIntentLink rRef="Media1" Usage="Input"/>
  </ResourceLinkPool>

```

```

<LayoutIntentLink rRef="Size1" Usage="Input"/>
<ProofingIntentLink rRef="Proof1" Usage="Input"/>
</ResourceLinkPool>
<ResourcePool>
  <Component DescriptiveName="flyer" ID="Item01flat" Class="Quantity" Status="Unavailable"
ComponentType="PartialProduct"/>
  <LayoutIntent ID="Size1" Class="Intent" Status="Available">
    <Dimensions DataType="XYPairSpan" Preferred="1224 792" Priority="Required">
      <!--HH This is the size of the flat, printed article.-->
    </Dimensions>
    <Pages DataType="IntegerSpan" Preferred="2"/>
  </LayoutIntent>
  <ArtDeliveryIntent ID="Art1" Class="Intent" Status="Available">
    <ArtDeliveryDate DataType="TimeSpan" Preferred="2002-07-23T17:00-08:00"/>
    <Transfer DataType="EnumerationSpan" Preferred="BuyerToPrinterDeliver"/>
    <ArtDelivery HasBleeds="true" PageList="0~3" ArtDeliveryType="DigitalMedia">
      <RunList Pages="0~3">
        <LayoutElement HasBleeds="true" ElementType="Document">
          <FileSpec Application="Quark"/>
        </LayoutElement>
      </RunList>
      <!--OO-->
    </ArtDelivery>
    <ArtDelivery HasBleeds="true" ArtDeliveryType="DigitalMedia">
      <RunList>
        <LayoutElement HasBleeds="true" ElementType="Image">
          <FileSpec Application="Photoshop"/>
          <Comment Name="Description" Attribute="ElementType">Cropped and scaled scans for
halftones.</Comment>
        </LayoutElement>
      </RunList>
      <!--OO-->
    </ArtDelivery>
    <Comment Name="Description">Solids and reverses completed and in the files.<!--OO-->
  </Comment>
  </ArtDeliveryIntent>
  <ColorIntent ID="Color1" Class="Intent" Status="Available">
    <ColorStandard DataType="NameSpan" Preferred="MonoChrome"/>
    <ColorsUsed>
      <!--II This is a 2-color job; colors must be listed since they are exactly those implied by
ColorStandard = "MonoChrome.-->
      <!--Here "PMSxxx" is used to mean "some unspecified PMS color.-->
      <SeparationSpec Name="Black"/>
      <SeparationSpec Name="PMSxxx"/>
    </ColorsUsed>
  </ColorIntent>
  <MediaIntent ID="Media1" Class="Intent" Status="Available">
    <!--JJ-->
    <FrontCoatings DataType="EnumerationSpan" Preferred="Semigloss"/>
    <StockType DataType="NameSpan" Preferred="Offset"/>
    <USWeight DataType="NumberSpan" Range="60~70">
      <!--MM-->
    </USWeight>
  </MediaIntent>
  <ProofingIntent ID="Proof1" Class="Intent" Status="Available">
    <!--PP-->
    <ProofItem ProofTarget="mailto:mmartin@pan-o-ramic.com">
      <ColorType DataType="EnumerationSpan" Preferred="BasicColor"/>
      <ProofType DataType="EnumerationSpan" preferred="Page"/>
      <Technology DataType="NameSpan" Preferred="SoftProof">
        <Comment Name="Instruction">Send PDF file</Comment>
      </Technology>
    </ProofItem>
  </ProofingIntent>
</ResourcePool>
</JDF>

```

```

</JDF>
</JDF>
</pt:RFQ>
</pt:Request>
</pt:PrintTalk>

```

Example B – “Bible”

In this example, we are producing two Bibles, one with a soft cover and another with a hard case cover and dust jacket. Just to make things interesting, the text is shared by both versions of books. We are producing 5,000 soft cover versions and 7,500 hard case versions. All are shipping to the same address.

A simple outline of the JDF for this project looks like this:

```

1 <JDF> Hard & Soft Cover Book
2   <CustomerInfo>
3   <DeliveryIntent>
4   <JDF> Hard Cover Bound Book
5     <BindingIntent>
6     <ComponentLink> - Text for both
7     <JDF> Hard Cover
8       <MediaIntent>
9     <JDF> Dust Jacket
10      <MediaIntent>
11   <JDF> Soft Cover Bound Book
12     <BindingIntent>
13     <ComponentLink> - Text for both
14     <JDF> Soft Cover
15       <MediaIntent>
16   <JDF> Text for both
17     <MediaIntent>

```

Line 1 is the JDF description of the project.

Line 2 represents the Customer buying these books. It would refer to contact and address information.

Line 3 explains the delivery instructions and refers to the same contact as on line 2 as the delivery destination.

Line 4 is the JDF description of the hard cover version.

Line 5 is the specification for the bindery used to bring the case, dust jacket, and text together to produce the hard cover version of the book.

Line 6 is the link to the text being produced.

Line 7 is the JDF describing the production of the case.

Line 8 is the MediaIntent describing the stock used to produce the hard cover.

Line 9 is the JDF describing the production specifications of the dust jacket.

Line 10 is the MediaIntent describing the paper used to produce the dust jacket.

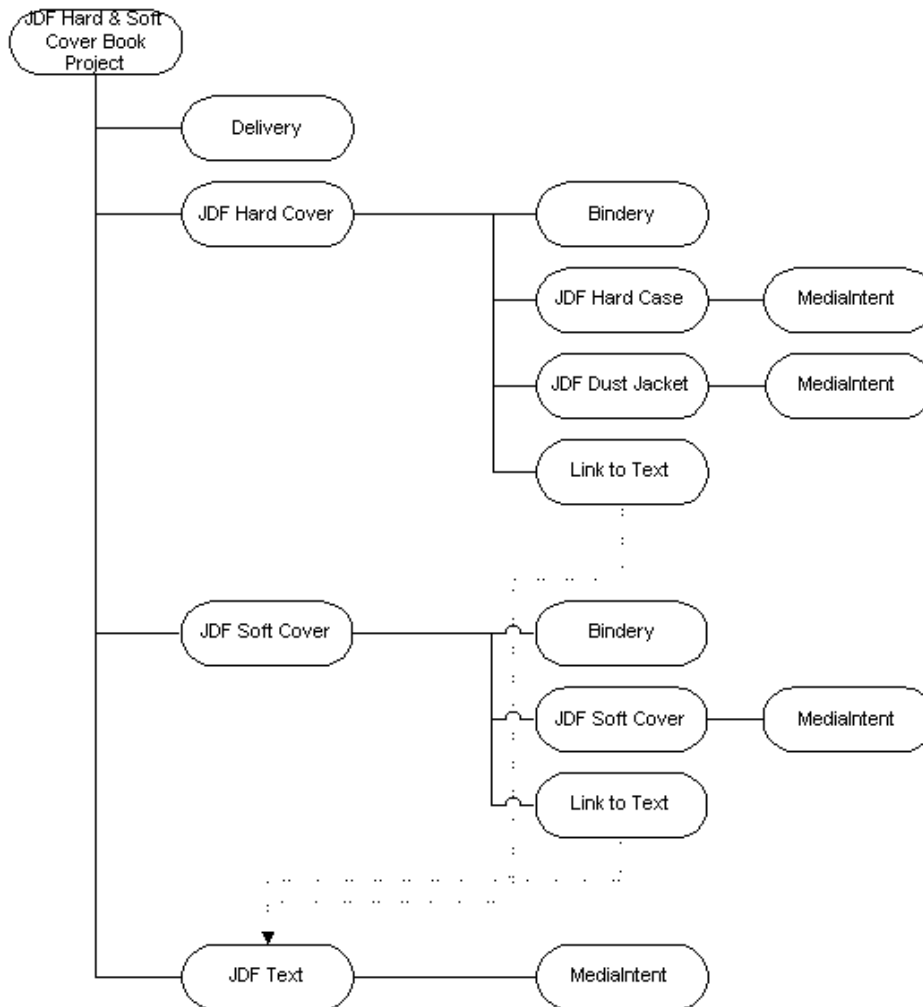
Line 11 is the JDF description of the soft cover version.

Line 12 is the specification for the bindery used to bring the soft cover and text together to produce the soft cover version of the book.

Line 13 is the link to the text being produced.

Line 14 is the JDF description of the soft cover itself.
 Line 15 is the MediaIntent describing the paper used to produce the soft cover.
 Line 16 is the description of the text used by both books.
 Line 17 is the MediaIntent describing the paper used to produce the text.

A hierarchical view of this project:



The root JDF level of this project combines the 2 finished products (soft and hard cover book), with the delivery intent. The second tier JDF specifications show the individual intents to produce each book. The specification for the text could be part of the specification on each of the books separately. Because it's a shared component, it is promoted to a higher level and can be referred (and consumed) by each of the lower JDF components.

Bible Example

Both the RFQ and subsequent Quote are included in this example. The major difference between the 2 documents is the addition of Pricing in the quote.

RFQ

```
<?xml version="1.0" encoding="utf-8"?>
<pt:PrintTalk xmlns:xsi="http://www.w3.org/2001/XMLSchema-instance" xmlns:pt="http://www.printtalk.org"
xmlns="http://www.CIP4.org/JDFSchemas_1_1" xsi:noNamespaceSchemaLocation="printtalk.xsd" version="1.1"
payloadID="107778" timestamp="2002-07-1T22:39:08:00">
  <!--version: This is the PrintTalk version; borrowed from cXML.-->
  <!--payloadID: This is transport unique ID of the message; borrowed from cXML.-->
  <pt:Header>
    <pt:From>
      <pt:Credential domain="DNS">
        <pt:Identity>www.billsfinebooks.com</pt:Identity>
      </pt:Credential>
      <pt:Credential domain="ECompany.com">
        <pt:Identity>Bill's Fine Books</pt:Identity>
      </pt:Credential>
      <pt:Credential domain="DUNS">
        <pt:Identity>06-388-7745</pt:Identity>
      </pt:Credential>
    </pt:From>
    <pt:To>
      <pt:Credential domain="ECompany.com">
        <pt:Identity>JJ Printing</pt:Identity>
      </pt:Credential>
      <pt:Credential domain="DUNS">
        <pt:Identity>06-358-9998</pt:Identity>
      </pt:Credential>
    </pt:To>
    <pt:Sender>
      <pt:Credential domain="DNS">
        <pt:Identity>PrintORama.com</pt:Identity>
        <pt:SharedSecret>rosebud</pt:SharedSecret>
      </pt:Credential>
      <pt:UserAgent>Print Buyer v.54.9</pt:UserAgent>
    </pt:Sender>
  </pt:Header>
  <pt:Request>
    <pt:RFQ AgentID="Marge" AgentDisplayName="Margaret Simpson" RequestDate="2002-07-1T10:00:08:00"
BusinessID="RFQ_A3317" Currency="USD" Estimate="true" Expires="2002-08-25T1700:0800">
      <!--Buyer requests a non-binding price. Just an estimate.-->
      <JDF DescriptiveName="224 page hard and soft cover book" ID="JDF000-Root" JobID="BuyerJob001"
Type="Product" Status="Waiting" Version="1.1">
        <!--JobID: sender's reference to a job/project.-->
        <!--Version: JDF version.-->
        <AuditPool>
          <!--Not required by PrintTalk, may be used at the discretion of the document creator.-->
          <Created Author="PrintTalk" TimeStamp="2002-07-1T11:20:08:00"/>
        </AuditPool>
        <CustomerInfo CustomerID="pb4653/99" rRefs="Contact01">
          <ContactRef rRef="Contact01"/>
        </CustomerInfo>
        <ResourcePool>
          <LayoutIntent ID="Size001(Finished)" Class="Intent" Status="Available">
            <Dimensions Range="576 720~648 864" DataType="XYPairSpan" Preferred="612 792"/>
            <Pages DataType="IntegerSpan" Preferred="224"/>
          </LayoutIntent>
          <DeliveryIntent ID="Delivery001" Class="Intent" rRefs="Contact02 Item001(HardBook) Item003(SoftBook)"
Status="Available">
            <DropIntent>
```

```

<!--Date by which the product is to be delivered-->
<Required DataType="TimeSpan" Preferred="2002-09-30T09:30-8:00"/>
<ContactRef rRef="Contact02"/>
<DropItemIntent Amount="7500" AdditionalAmount="1000">
  <ComponentRef rRef="Item001(HardBook)"/>
</DropItemIntent>
<DropItemIntent Amount="5000" AdditionalAmount="1000">
  <ComponentRef rRef="Item003(SoftBook)"/>
</DropItemIntent>
</DropIntent>
<Comment>Delivery of hardcover and softcover job</Comment>
</DeliveryIntent>
<Company ID="Company01" Class="Parameter" Status="Available" OrganizationName="Mega Corp"/>
<Contact ID="Contact01" Class="Parameter" Status="Available" rRefs="Company01"
ContactTypes="Customer Billing">
  <Address Street="820 N. French Street" City="Wilmington" Region="DE" PostalCode="19801">
    <ExtendedAddress>Attention: Accounts Payable</ExtendedAddress>
  </Address>
  <Person JobTitle="Purchasing Manager" FirstName="Lisa" FamilyName="Luft"/>
  <CompanyRef rRef="Company01"/>
</Contact>
<Contact ID="Contact02" Class="Parameter" Status="Available" rRefs="Company01"
ContactTypes="Delivery">
  <Address Street="555 Maple Drive" City="San Mateo" Region="CA" PostalCode="94403">
    <ExtendedAddress>Suite 245</ExtendedAddress>
  </Address>
  <Person JobTitle="Head of Book Division" FirstName="William" FamilyName="Johnson"/>
  <CompanyRef rRef="Company01"/>
</Contact>
</ResourcePool>
<ResourceLinkPool>
  <DeliveryIntentLink rRef="Delivery001" Usage="Input"/>
</ResourceLinkPool>
<JDF DescriptiveName="224 page hard case bound book with a 4/0 dust jacket" ID="JDF001(HardBook)"
Type="Product" Status="Waiting">
  <!--For RFQ, whatever JDF "Product" elements necessary to specify components to be delivered.-->
  <ResourcePool>
    <Component ID="Item001(HardBook)" Class="Quantity" Status="Unavailable" DescriptiveName="224
page hard case bound book with a 4/0 dust jacket" ComponentType="FinalProduct"/>
    <BindingIntent ID="Bind001(HardCover)" Class="Intent" Status="Available">
      <BindingType DataType="EnumerationSpan" Preferred="Sewn"/>
      <BindingLength DataType="EnumerationSpan" Preferred="Long"/>
    </BindingIntent>
  </ResourcePool>
  <ResourceLinkPool>
    <ComponentLink rRef="Item001(HardBook)" Usage="Output"/>
    <ComponentLink rRef="Item002(HardCase)" Usage="Input" ProcessUsage="Cover"/>
    <ComponentLink rRef="Item004(Text)" Usage="Input"/>
    <ComponentLink rRef="Item006(DustJacket)" Usage="Input"/>
    <BindingIntentLink rRef="Bind001(HardCover)" Usage="Input"/>
    <LayoutIntentLink rRef="Size001(Finished)" Usage="Input"/>
  </ResourceLinkPool>
  <JDF DescriptiveName="DustJacket for Hard Cover" ID="JDF004(DustJacket)" Type="Product"
Status="Waiting">
    <ResourcePool>
      <Component ID="Item006(DustJacket)" Class="Quantity" Status="Unavailable" DescriptiveName="Dust
Jacket" ComponentType="PartialProduct"/>
      <ColorIntent ID="Color002(DustJacket)" Class="Intent" Status="Available">
        <Coverage DataType="NumberSpan" Preferred="50"/>
        <ColorStandard Range="CMYK" DataType="NameSpan" Preferred="CMYK"/>
        <InkManufacturer Range="ToyoCrayola" DataType="NameSpan" Preferred="ToyoCrayola"/>
      </ColorIntent>
      <MediaIntent ID="Media002(DustJacket)" Class="Intent" Status="Available">
        <FrontCoatings DataType="NameSpan" Preferred="None"/>
        <StockType DataType="NameSpan" Preferred="Offset"/>
      </MediaIntent>

```

```

</ResourcePool>
<ResourceLinkPool>
  <ComponentLink rRef="Item006(DustJacket)" Usage="Output"/>
  <LayoutIntentLink rRef="Size001(Finished)" Usage="Input"/>
  <ColorIntentLink rRef="Color002(DustJacket)" Usage="Input"/>
  <MediaIntentLink rRef="Media002(DustJacket)" Usage="Input"/>
</ResourceLinkPool>
</JDF>
<JDF DescriptiveName="Case for Hard Cover" ID="JDF006(Case)" Type="Product" Status="Waiting">
  <ResourcePool>
    <Component ID="Item002(HardCase)" Class="Quantity" Status="Unavailable" DescriptiveName="Book
Case" ComponentType="PartialProduct"/>
    <MediaIntent ID="Media001(Case)" Class="Intent" Status="Available">
      <MediaColor DataType="EnumerationSpan" Preferred="Black"/>
      <StockType DataType="NameSpan" Preferred="Cloth"/>
    </MediaIntent>
  </ResourcePool>
  <ResourceLinkPool>
    <ComponentLink rRef="Item002(HardCase)" Usage="Output"/>
    <LayoutIntentLink rRef="Size001(Finished)" Usage="Input"/>
    <MediaIntentLink rRef="Media001(Case)" Usage="Input"/>
  </ResourceLinkPool>
</JDF>
</JDF>
<JDF DescriptiveName="224 page soft cover, perfect bound book" ID="JDF002(SoftBook)" Type="Product"
Status="Waiting">
  <ResourcePool>
    <Component ID="Item003(SoftBook)" Class="Quantity" Status="Unavailable" DescriptiveName="soft
cover, perfect bound book" ComponentType="FinalProduct"/>
    <BindingIntent ID="Bind002(SoftCover)" Class="Intent" Status="Available">
      <BindingType DataType="EnumerationSpan" Preferred="Adhesive"/>
    </BindingIntent>
  </ResourcePool>
  <ResourceLinkPool>
    <ComponentLink rRef="Item003(SoftBook)" Usage="Output"/>
    <ComponentLink rRef="Item005(SoftCover)" Usage="Input"/>
    <MediaIntentLink rRef="Media003(SoftCover)" Usage="Input"/>
    <ComponentLink rRef="Item004(Text)" Usage="Input"/>
    <LayoutIntentLink rRef="Size001(Finished)" Usage="Input"/>
    <BindingIntentLink rRef="Bind002(SoftCover)" Usage="Input"/>
  </ResourceLinkPool>
  <JDF DescriptiveName="Soft Cover" ID="JDF005(SoftCover)" Type="Product" Status="Waiting">
    <ResourcePool>
      <Component ID="Item005(SoftCover)" Class="Quantity" Status="Unavailable" DescriptiveName="soft
cover" ComponentType="PartialProduct"/>
      <MediaIntent ID="Media003(SoftCover)" Class="Intent" Status="Available">
        <FrontCoatings DataType="NameSpan" Preferred="None"/>
        <StockType DataType="NameSpan" Preferred="offset"/>
      </MediaIntent>
      <ColorIntent ID="Color003(SoftCover)" Class="Intent" Status="Available">
        <Coverage DataType="NumberSpan" Preferred="50"/>
        <ColorStandard Range="CMYK" DataType="NameSpan" Preferred="CMYK"/>
        <InkManufacturer Range="ToyoCrayola" DataType="NameSpan" Preferred="ToyoCrayola"/>
      </ColorIntent>
    </ResourcePool>
    <ResourceLinkPool>
      <ComponentLink rRef="Item005(SoftCover)" Usage="Output"/>
      <LayoutIntentLink rRef="Size001(Finished)" Usage="Input"/>
      <ColorIntentLink rRef="Color003(SoftCover)" Usage="Input"/>
      <MediaIntentLink rRef="Media003(SoftCover)" Usage="Input"/>
    </ResourceLinkPool>
  </JDF>
</JDF>
<JDF DescriptiveName="text for 224 page book" ID="JDF003(Text)" Type="Product" Status="Waiting">
  <ResourcePool>

```



```

    <Component ID="Item004(Text)" Class="Quantity" Status="Unavailable" DescriptiveName="Reader text
for hard or soft cover 224 page book" ComponentType="PartialProduct"/>
    <ColorIntent ID="Color001(Text)" Class="Intent" Status="Available">
      <Coverage DataType="NumberSpan" Preferred="10"/>
      <ColorStandard DataType="NameSpan" Preferred="MonoChrome"/>
      <InkManufacturer Range="Black" DataType="NameSpan"/>
    </ColorIntent>
    <MediaIntent ID="Media001(Text)" Class="Intent" Status="Available">
      <FrontCoatings DataType="NameSpan" Preferred="None"/>
      <StockType DataType="NameSpan" Preferred="bond"/>
      <USWeight DataType="NumberSpan" Preferred="9"/>
      <Opacity DataType="EnumerationSpan" Preferred="Opaque"/>
    </MediaIntent>
  </ResourcePool>
  <ResourceLinkPool>
    <ComponentLink rRef="Item004(Text)" Usage="Output"/>
    <ColorIntentLink rRef="Color001(Text)" Usage="Input"/>
    <MediaIntentLink rRef="Media001(Text)" Usage="Input"/>
    <LayoutIntentLink rRef="Size001(Finished)" Usage="Input"/>
  </ResourceLinkPool>
</JDF>
</JDF>
</pt:RFQ>
</pt:Request>
</pt:PrintTalk>

```

Bible Example

QUOTE

```

<?xml version="1.0" encoding="utf-8"?>
<pt:PrintTalk xmlns:xsi="http://www.w3.org/2001/XMLSchema-instance" xmlns:pt="http://www.printtalk.org"
xmlns="http://www.CIP4.org/JDFSchemas_1_1" xsi:noNamespaceSchemaLocation="printtalk.xsd" version="1.1"
payloadID="107778" timestamp="2002-07-25T22:39-08:00">
  <!--version: This is the PrintTalk version; borrowed from cXML.-->
  <!--payloadID: This is transport unique ID of the message; borrowed from cXML.-->
  <pt:Header>
    <pt:From>
      <pt:Credential domain="ECompany.com">
        <pt:Identity>JJ Printing</pt:Identity>
      </pt:Credential>
      <pt:Credential domain="DUNS">
        <pt:Identity>06-358-9998</pt:Identity>
      </pt:Credential>
    </pt:From>
    <pt:To>
      <pt:Credential domain="DNS">
        <pt:Identity>www.billsfinebooks.com</pt:Identity>
      </pt:Credential>
      <pt:Credential domain="ECompany.com">
        <pt:Identity>Bill's Fine Books</pt:Identity>
      </pt:Credential>
      <pt:Credential domain="DUNS">
        <pt:Identity>06-388-7745</pt:Identity>
      </pt:Credential>
    </pt:To>
    <pt:Sender>
      <pt:Credential domain="DNS">
        <pt:Identity>www.JJPrinting.com</pt:Identity>
      <pt:SharedSecret>rosebud</pt:SharedSecret>
      </pt:Credential>
      <pt:UserAgent>EFD 6.0</pt:UserAgent>
    </pt:Sender>
  </pt:Header>
  <pt:Request>
    <pt:Quote AgentID="Carlos" AgentDisplayName="Carlos Chavez" RequestDate="2002-07-25T10:00-08:00"
BusinessID="Quote744910" BusinessRefID="RFQ_A3317" Currency="USD" Estimate="true" Expires="2002-08-
26T1700-0800">
      <!--Provider sends a non-binding price. Just an estimate.-->
      <JDF DescriptiveName="224 page hard and soft cover book" ID="JDF000-Root" JobID="BuyerJob001"
Type="Product" Status="Waiting" Version="1.1">
        <!--JobID: sender's reference to a job/project.-->
        <!--Version: JDF version.-->
        <AuditPool>
          <!--Not required by PrintTalk, may be used at the discretion of the document creator.-->
          <Created Author="PrintTalk" TimeStamp="2002-07-1T11:20-08:00"/>
        </AuditPool>
        <CustomerInfo CustomerID="pb4653/99" rRefs="Contact01">
          <ContactRef rRef="Contact01"/>
        </CustomerInfo>
        <ResourceInfo>
          <DeliveryIntent ID="Delivery001" Class="Intent" rRefs="Contact02 Item001(HardBook) Item003(SoftBook)"
Status="Available">
            <DropIntent>
              <Required DataType="TimeSpan" Preferred="2002-09-30T09:30-8:00"/>
              <!--Date by which the product is to be delivered-->
              <ContactRef rRef="Contact02"/>
            </DropIntent>
          </DeliveryIntent>
        </ResourceInfo>
      </JDF>
    </pt:Quote>
  </pt:Request>
</pt:PrintTalk>

```

```

    <DropItemIntent Amount="7500" AdditionalAmount="1000">
      <ComponentRef rRef="Item001(HardBook)"/>
      <Pricing Item="7500 Hard Cover Books, Shipped" Currency="USD" Price="25383.00">
        <Pricing Item="Hard Cover Book" Price="24150.00" AdditionalPrice="2650.00">
          <Comment>Estimated price $3.22 per book. Additional price $2.65 per book +
shipping</Comment>
        </Pricing>
        <Pricing Item="shipping" Price="1233.00">
          <Comment>Shipped UPS bookrate</Comment>
        </Pricing>
      </Pricing>
    </DropItemIntent>
    <DropItemIntent Amount="5000" AdditionalAmount="1000">
      <ComponentRef rRef="Item003(SoftBook)"/>
      <Pricing Item="5000 Soft Cover Books, Shipped" Price="9583.00" Currency="USD">
        <Pricing Item="Soft Cover Book" Price="8800.00" AdditionalPrice="1230.00">
          <Comment>Estimated price $1.76 per book. Additional price $1.23 per book +
shipping</Comment>
        </Pricing>
        <Pricing Item="shipping" Price="783.00">
          <Comment>Shipped UPS bookrate</Comment>
        </Pricing>
      </Pricing>
    </DropItemIntent>
  </DropIntent>
  <Comment>Delivery of hardcover and softcover job</Comment>
</DeliveryIntent>
<Company ID="Company01" Class="Parameter" Status="Available" OrganizationName="Mega Corp"/>
<Contact ID="Contact01" Class="Parameter" Status="Available" rRefs="Company01"
ContactTypes="Customer Billing">
  <Address Street="820 N. French Street" City="Wilmington" Region="DE" PostalCode="19801">
    <ExtendedAddress>Attention: Accounts Payable</ExtendedAddress>
  </Address>
  <Person JobTitle="Purchasing Manager" FirstName="Lisa" FamilyName="Luft"/>
  <CompanyRef rRef="Company01"/>
</Contact>
<Contact ID="Contact02" Class="Parameter" Status="Available" rRefs="Company01"
ContactTypes="Delivery">
  <Address Street="555 Maple Drive" City="San Mateo" Region="CA" PostalCode="94403">
    <ExtendedAddress>Suite 245</ExtendedAddress>
  </Address>
  <Person JobTitle="Head of Book Division" FirstName="William" FamilyName="Johnson"/>
  <CompanyRef rRef="Company01"/>
</Contact>
</ResourcePool>
<ResourceLinkPool>
  <DeliveryIntentLink rRef="Delivery001" Usage="Input"/>
</ResourceLinkPool>
<JDF DescriptiveName="224 page hard case bound book with a 4/0 dust jacket" ID="JDF001(HardBook)"
Type="Product" Status="Waiting">
  <!--For Quote, whatever JDF "Product" elements necessary to specify components to be delivered.-->
  <ResourcePool>
    <Component ID="Item001(HardBook)" Class="Quantity" Status="Unavailable" DescriptiveName="224
page hard case bound book with a 4/0 dust jacket" ComponentType="FinalProduct"/>
    <LayoutIntent ID="Size001(Finished)" Class="Intent" Status="Available">
      <Dimensions DataType="XYPairSpan" Preferred="612 792" Range="576 720~648 864"/>
      <Pages DataType="IntegerSpan" Preferred="224"/>
    </LayoutIntent>
    <BindingIntent ID="Bind001(HardCover)" Class="Intent" Status="Available">
      <BindingType DataType="EnumerationSpan" Preferred="HardCover"/>
      <BindingLength DataType="EnumerationSpan" Preferred="Long"/>
    </BindingIntent>
  </ResourcePool>
</ResourceLinkPool>
  <ComponentLink rRef="Item001(HardBook)" Usage="Output"/>
  <ComponentLink rRef="Item002(HardCase)" Usage="Input" ProcessUsage="Cover"/>

```

```

    <ComponentLink rRef="Item004(Text)" Usage="Input"/>
    <ComponentLink rRef="Item006(DustJacket)" Usage="Input"/>
    <BindingIntentLink rRef="Bind001(HardCover)" Usage="Input"/>
    <LayoutIntentLink rRef="Size001(Finished)" Usage="Input"/>
  </ResourceLinkPool>
  <JDF DescriptiveName="DustJacket for Hard Cover" ID="JDF004(DustJacket)" Type="Product"
Status="Waiting">
    <ResourcePool>
      <Component ID="Item006(DustJacket)" Class="Quantity" Status="Unavailable" DescriptiveName="Dust
Jacket" ComponentType="PartialProduct"/>
      <ColorIntent ID="Color002(DustJacket)" Class="Intent" Status="Available">
        <Coverage DataType="NumberSpan" Preferred="50"/>
        <ColorStandard DataType="NameSpan" Preferred="CMYK" Priority="Required"/>
        <InkManufacturer DataType="NameSpan" Preferred="ToyoCrayola" Priority="Required"/>
      </ColorIntent>
      <MediaIntent ID="Media002(DustJacket)" Class="Intent" Status="Available">
        <FrontCoatings DataType="EnumerationSpan" Preferred="None"/>
        <StockType DataType="NameSpan" Preferred="Offset"/>
      </MediaIntent>
    </ResourcePool>
    <ResourceLinkPool>
      <ComponentLink rRef="Item006(DustJacket)" Usage="Output"/>
      <ColorIntentLink rRef="Color002(DustJacket)" Usage="Input"/>
      <LayoutIntentLink rRef="Size001(Finished)" Usage="Input"/>
      <MediaIntentLink rRef="Media002(DustJacket)" Usage="Input"/>
    </ResourceLinkPool>
  </JDF>
  <JDF DescriptiveName="Case for Hard Cover" ID="JDF006(Case)" Type="Product" Status="Waiting">
    <ResourcePool>
      <Component ID="Item002(HardCase)" Class="Quantity" Status="Unavailable" DescriptiveName="Book
Case" ComponentType="PartialProduct"/>
      <MediaIntent ID="Media001(Case)" Class="Intent" Status="Available">
        <MediaColor DataType="EnumerationSpan" Preferred="Black"/>
        <StockType DataType="NameSpan" Preferred="Cloth"/>
      </MediaIntent>
    </ResourcePool>
    <ResourceLinkPool>
      <ComponentLink rRef="Item002(HardCase)" Usage="Output"/>
      <LayoutIntentLink rRef="Size001(Finished)" Usage="Input"/>
      <MediaIntentLink rRef="Media001(Case)" Usage="Input"/>
    </ResourceLinkPool>
  </JDF>
</JDF>
  <JDF DescriptiveName="224 page soft cover, perfect bound book" ID="JDF002(SoftBook)" Type="Product"
Status="Waiting">
    <ResourcePool>
      <Component ID="Item003(SoftBook)" Class="Quantity" Status="Unavailable" DescriptiveName="soft
cover, perfect bound book" ComponentType="FinalProduct"/>
      <BindingIntent ID="Bind002(SoftCover)" Class="Intent" Status="Available">
        <BindingType DataType="EnumerationSpan" Preferred="SoftCover"/>
      </BindingIntent>
    </ResourcePool>
    <ResourceLinkPool>
      <ComponentLink rRef="Item003(SoftBook)" Usage="Output"/>
      <ComponentLink rRef="Item005(SoftCover)" Usage="Input" ProcessUsage="Cover"/>
      <ComponentLink rRef="Item004(Text)" Usage="Input"/>
      <LayoutIntentLink rRef="Size001(Finished)" Usage="Input"/>
      <BindingIntentLink rRef="Bind002(SoftCover)" Usage="Input"/>
    </ResourceLinkPool>
  <JDF DescriptiveName="Soft Cover" ID="JDF005(SoftCover)" Type="Product" Status="Waiting">
    <ResourcePool>
      <Component ID="Item005(SoftCover)" Class="Quantity" Status="Unavailable" DescriptiveName="soft
cover" ComponentType="PartialProduct"/>
      <MediaIntent ID="Media003(SoftCover)" Class="Intent" Status="Available">
        <FrontCoatings DataType="EnumerationSpan" Preferred="None"/>
        <StockType DataType="NameSpan" Preferred="Offset"/>
      </MediaIntent>
    </ResourcePool>
  </JDF>

```

```

    </MediaIntent>
    <ColorIntent ID="Color003(SoftCover)" Class="Intent" Status="Available">
      <Coverage DataType="NumberSpan" Preferred="50"/>
      <ColorStandard DataType="NameSpan" Preferred="CMYK" Priority="Required"/>
      <InkManufacturer DataType="NameSpan" Preferred="ToyoCrayola" Priority="Required"/>
    </ColorIntent>
  </ResourcePool>
</ResourceLinkPool>
  <ComponentLink rRef="Item005(SoftCover)" Usage="Output"/>
  <LayoutIntentLink rRef="Size001(Finished)" Usage="Input"/>
  <ColorIntentLink rRef="Color003(SoftCover)" Usage="Input"/>
  <MediaIntentLink rRef="Media003(SoftCover)" Usage="Input"/>
</ResourceLinkPool>
</JDF>
</JDF>
<JDF DescriptiveName="text for 224 page book" ID="JDF003(Text)" Type="Product" Status="Waiting">
  <ResourcePool>
    <Component ID="Item004(Text)" Class="Quantity" Status="Unavailable" DescriptiveName="Reader text
for hard or soft cover 224 page book" ComponentType="PartialProduct"/>
    <ColorIntent ID="Color001(Text)" Class="Intent" Status="Available">
      <ColorStandard DataType="NameSpan" Preferred="MonoChrome"/>
      <Coverage DataType="NumberSpan" Preferred="10"/>
      <InkManufacturer Range="Black" DataType="NameSpan"/>
    </ColorIntent>
    <MediaIntent ID="Media001(Text)" Class="Intent" Status="Available">
      <FrontCoatings DataType="EnumerationSpan" Preferred="None"/>
      <Opacity DataType="EnumerationSpan" Preferred="Opaque"/>
      <StockType DataType="NameSpan" Preferred="Bond"/>
      <USWeight DataType="NumberSpan" Preferred="9"/>
    </MediaIntent>
  </ResourcePool>
</ResourceLinkPool>
  <ComponentLink rRef="Item004(Text)" Usage="Output"/>
  <ColorIntentLink rRef="Color001(Text)" Usage="Input"/>
  <MediaIntentLink rRef="Media001(Text)" Usage="Input"/>
  <LayoutIntentLink rRef="Size001(Finished)" Usage="Input"/>
</ResourceLinkPool>
</JDF>
</JDF>
</pt:Quote>
</pt:Request>
</pt:PrintTalk>

```

Example C – “Sunrise PurchaseOrder”

In PrintTalk, the Quote response to an RFQ will look similar to that RFQ, usually restating many of the items in the original RFQ. In the same way, a Purchase Order response to a Quote will look similar to the Quote. Of course, in the PO, any *options* should be eliminated and the pricing should specify the exact quantity and tolerance for each delivery. It is also acceptable for the PO to simply acknowledge the quote and respond with acceptance without restating any of the specifications.

By using JDF, PrintTalk can support another kind of PO entirely. Sometimes, it's necessary to purchase an item from a printer that has a pre-established price and well-defined content. To embrace this Catalog-based part of the print market, JDF/PrintTalk allows finished goods to be ordered in a PO as components using the *CatalogID* and *CatalogDetails* attributes.

The following example uses Catalog elements as the contents of a Purchase Order.



MEGA corporation

Bill to:
Mega Corporation
4100 State Street
Little Rock, AR 72201

PURCHASE ORDER
24022

Supplier:

Sunrise Printing
444 South Main Street
Albany, NY 12205

SUPPLIER ID:	730995
ORDER DATE:	10-Jul-2002
REQUESTOR:	Pat Butler
EMAIL:	pbutler@megacorp.com
FAX NO.:	973-555-1212
REFERENCE:	Sales

Ship To:

Phil Chavez
c/o Reylon Division
24 Madison Avenue
Suite 1
New York, NY 10022

Terms	Shipping Method	Due Date
2% 10, Net 30	UPS	8/22/02

Item	Quantity	U / M	Description	Unit Price	Disc %	Total
1	1	500	Business Cards-Phil Chavez	62.50	0	62.50
2	1	500	Notepad-Phil Chavez	54.00	10	48.60
3	250	1	Reylon Mailer	3.04	0	760.00

Please state our PO number on all invoices.

- 1. Refer all inquiries to buyer.
- 2. We reserve the right to return all over shipments for credit at Vendor's expense.
- 3. This order subject to Terms and Conditions on reverse side.

TOTAL:	871.10
DISCOUNT:	.00
TAX:	.00
SHIPPING:	12.00
OTHER:	.00
ORDER TOTAL:	883.10

Sunrise Example

```

<?xml version="1.0" encoding="UTF-8"?>
<pt:PrintTalk xmlns:xsi="http://www.w3.org/2001/XMLSchema-instance" xmlns:pt="http://www.printtalk.org"
xmlns="http://www.CIP4.org/JDFSchema_1_1" xsi:noNamespaceSchemaLocation="printtalk.xsd" version="1.1"
payloadID="107448" timestamp="2002-07-10T22:39Z">
  <pt:Header>
    <pt:From>
      <pt:Credential domain="DNS">
        <pt:Identity>www.megacorp.com</pt:Identity>
      </pt:Credential>
      <pt:Credential domain="ECompany.com">
        <pt:Identity>Mega Corp</pt:Identity>
      </pt:Credential>
      <pt:Credential domain="DUNS">
        <pt:Identity>063887745</pt:Identity>
      </pt:Credential>
    </pt:From>
    <pt:To>
      <pt:Credential domain="ECompany.com">
        <pt:Identity>Sunrise Printing</pt:Identity>
      </pt:Credential>
      <pt:Credential domain="DUNS">
        <pt:Identity>063589998</pt:Identity>
      </pt:Credential>
    </pt:To>
    <pt:Sender>
      <pt:Credential domain="DNS">
        <pt:Identity>PrintORama.com</pt:Identity>
      <pt:SharedSecret>firehose</pt:SharedSecret>
    </pt:Credential>
    <pt:UserAgent>Print Buyer v.54.9</pt:UserAgent>
  </pt:Sender>
</pt:Header>
<pt:Request>
  <pt:PurchaseOrder AgentID="Patb" AgentDisplayName="Pat Butler" RequestDate="2002-07-10T1000-0800"
BusinessID="24022" Currency="USD" Estimate="false" Expires="2002-08-10T1700-0800">
    <JDF DescriptiveName="Purchase Order 24022" ID="JDF000-Root" JobID="0901-1243" Type="Product"
Status="Waiting" Version="1.1">
      <CustomerInfo CustomerID="423163" rRefs="Contact02">
        <ContactRef rRef="Contact02"/>
      </CustomerInfo>
      <ResourcePool>
        <Contact ID="Contact01" Class="Parameter" Status="Available" ContactTypes="Delivery">
          <Address Street="24 Madison Avenue" City="New York" Region="NY" PostalCode="10022">
            <ExtendedAddress>Suite 1</ExtendedAddress>
          </Address>
          <Person JobTitle="Sales Manager, East Coast" FirstName="Phil" FamilyName="Chavez"/>
          <Company ID="Company01" Class="Parameter" Status="Available" OrganizationName="Reylon
Division"/>
        </Contact>
        <Contact ID="Contact02" Class="Parameter" Status="Available" ContactTypes="Billing Customer">
          <Address Street="4100 State Street" City="Little Rock" Region="AR" PostalCode="72201"/>
          <Company ID="Company02" Class="Parameter" Status="Available" OrganizationName="Mega
Corporation"/>
        </Contact>
        <DeliveryIntent ID="Delivery001" Class="Intent" rRefs="Contact01 Item001 Item002 Item003"
Status="Available">
          <Method DataType="NameSpan" Preferred="UPS"/>
          <DropIntent>
            <Required DataType="TimeSpan" Preferred="2002-08-22T09:30-8:00"/>
            <ContactRef rRef="Contact01"/>
            <DropItemIntent Amount="1" Unit="500">

```



```

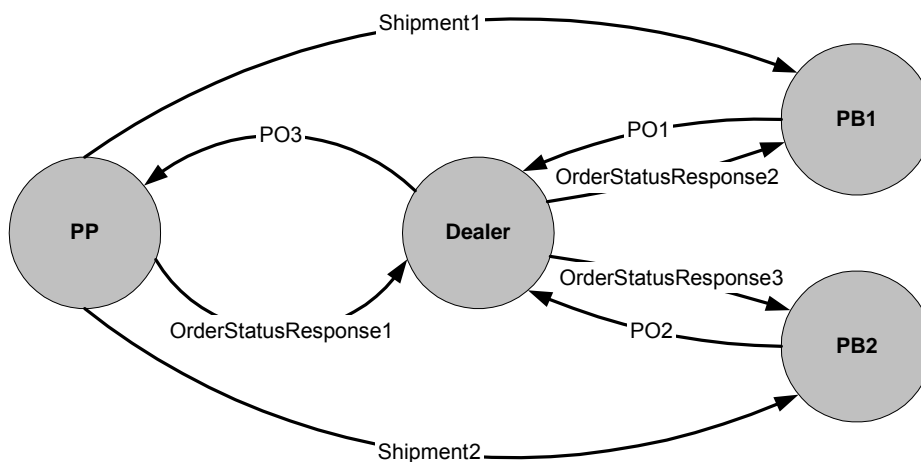
    <ComponentRef rRef="Item001"/>
    <Pricing Item="Total" Price="62.50">
      <Pricing Item="Discount" HasPrice="false"/>
    </Pricing>
  </DropItemIntent>
  <DropItemIntent Amount="1" Unit="500">
    <ComponentRef rRef="Item002"/>
    <Pricing Item="Total" Price="48.60">
      <Pricing Item="Amount * Unit Price" Price="54.00"/>
      <Pricing Item="Discount" Price="5.40"/>
    </Pricing>
  </DropItemIntent>
  <DropItemIntent Amount="250" Unit="1">
    <ComponentRef rRef="Item003"/>
    <Pricing Item="Total" Price="760.00"/>
  </DropItemIntent>
</DropIntent>
<Pricing Item="Total order" Price="883.10">
  <Pricing Item="Total" Price="871.10"/>
  <Pricing Item="Shipping and Handling" Price="12.00"/>
  <Pricing Item="Tax" HasPrice="false"/>
  <Pricing Item="Discount" HasPrice="false"/>
  <Payment>
    <PayTerm>2% 10, Net 30</PayTerm>
  </Payment>
</Pricing>
</DeliveryIntent>
  <Component ID="Item001" Class="Quantity" Status="Available" DescriptiveName="Business Cards - Phil
Chavez" ComponentType="FinalProduct" CatalogID="BC-Phil Chavez" ProductID="Reylon-123"
CatalogDetails="Business Cards - Phil Chavez"/>
  <Component ID="Item002" Class="Quantity" Status="Available" DescriptiveName="Notepad - Phil Chavez"
ComponentType="FinalProduct" CatalogID="NP-Phil Chavez" ProductID="Reylon-124" CatalogDetails="Notepad -
Phil Chavez"/>
  <Component ID="Item003" Class="Quantity" Status="Available" DescriptiveName="Reylon Mailer"
ComponentType="FinalProduct" CatalogID="RM 25.5" ProductID="Reylon-125" CatalogDetails="Reylon Mailer"/>
</ResourcePool>
<ResourceLinkPool>
  <DeliveryIntentLink rRef="Delivery001" Usage="Input"/>
</ResourceLinkPool>
</JDF>
</pt:PurchaseOrder>
</pt:Request>
</pt:PrintTalk>

```

Example D – Collaboration scenario

In this section a possible scenario should be exemplified as it might occur between several parties involved in a print production process. It is assumed that the following four parties exist: A Print Buyer PB1 and a Print Buyer PB2 both are ordering products via a “dealer” which in turns forwards the orders to a Print Provider.

In a first step both Print Buyers send a Purchase Order to the dealer. The dealer then merges the two POs to a new one (PO3) and sends it to the Print Provider. The Print Provider finally sends status information back to the dealer who in turn might forward that back to his customers. On the other hand the physical products are sent directly from the Print Provider to the customers of the dealer including the end customer’s PO numbers.



The PrintTalk/JDF files exchanged by the parties might look as follows (please note that the JDF part is not fully specified):

PO1:

```

<?xml version="1.0" encoding="UTF-8"?>
<pt:PrintTalk xmlns:xsi="http://www.w3.org/2001/XMLSchema-instance" xmlns:pt="http://www.printtalk.org"
xmlns="http://www.CIP4.org/JDFSchema_1_1" xsi:noNamespaceSchemaLocation="printtalk.xsd" version="1.1"
payloadID="107448" timestamp="2002-09-05T1000-0800">
  <pt:Header>
    <pt:From>
      <pt:Credential domain="DNS">
        <pt:Identity>www.fredsfinerugs.com</pt:Identity>
      </pt:Credential>
      <pt:Credential domain="DUNS">
        <pt:Identity>063333745</pt:Identity>
      </pt:Credential>
    </pt:From>
    <pt:To>
      <pt:Credential domain="ECompany.com">
        <pt:Identity>Print Dealer</pt:Identity>
      </pt:Credential>
      <pt:Credential domain="DUNS">
  
```

```

    <pt:Identity>063566668</pt:Identity>
  </pt:Credential>
</pt:To>
<pt:Sender>
  <pt:Credential domain="DNS">
    <pt:Identity>PrintORama.com</pt:Identity>
    <pt:SharedSecret>firehose</pt:SharedSecret>
  </pt:Credential>
  <pt:UserAgent>PrintORama v.1.0</pt:UserAgent>
</pt:Sender>
</pt:Header>
<pt:Request>
  <pt:PurchaseOrder AgentID="Lisal" AgentDisplayName="Lisa Luft" RequestDate="2002-09-05T1000-0800"
BusinessID="12345" Currency="USD" Expires="2002-09-10T1700-0800">
    <JDF DescriptiveName="Winter Sales Promo" ID="JDF000-Root" JobID="0901-1243" Type="Product"
Status="Waiting" Version="1.1">
      <CustomerInfo CustomerID="952425" rRefs="Contact01">
        <ContactRef rRef="Contact01"/>
      </CustomerInfo>
      <ResourcePool>
        <Contact ID="Contact01" Class="Parameter" Status="Available" ContactTypes="Billing Delivery
Customer">
          <Address Street="1745 First Street" City="Dublin" Region="OH" PostalCode="43202"/>
          <Person JobTitle="Sales Administrator" FirstName="June" FamilyName="Jones"/>
          <Company ID="Company01" Class="Parameter" Status="Available" OrganizationName="Fred's fine
Rugs"/>
        </Contact>
        <DeliveryIntent ID="Delivery001" Class="Intent" rRefs="Contact01 Item001" Status="Available">
          <Method DataType="NameSpan" Preferred="UPS"/>
          <DropIntent>
            <Required DataType="TimeSpan" Preferred="2002-09-22T09:30-8:00"/>
            <ContactRef rRef="Contact01"/>
            <DropItemIntent Amount="1" Unit="500">
              <ComponentRef rRef="Item001"/>
            </DropItemIntent>
          </DropIntent>
          <Pricing Item="Total order" Price="1583.00">
            <Pricing Item="Total" Price="1531.00"/>
            <Pricing Item="Shipping and Handling" Price="42.00"/>
            <Pricing Item="Tax" HasPrice="false"/>
            <Pricing Item="Discount" HasPrice="false"/>
          <Payment>
            <PayTerm>2% 10, Net 30</PayTerm>
          </Payment>
        </Pricing>
      </DeliveryIntent>
    </ResourcePool>
    <ResourceLinkPool>
      <DeliveryIntentLink rRef="Delivery001" Usage="Input"/>
    </ResourceLinkPool>
    <JDF DescriptiveName="Ordered Product" ID="JDF001" Type="Product" Status="Waiting">
      <ResourcePool>
        <!--ResourcePool only added as placeholder-->
      </ResourcePool>
      <ResourceLinkPool>
        <!--ResourceLinkPool only added as placeholder-->
      </ResourceLinkPool>
    </JDF>
    <!--Sub-JDF-node only added as placeholder-->
  </JDF>
</pt:PurchaseOrder>
</pt:Request>
</pt:PrintTalk>

```

PO2:

```

<?xml version="1.0" encoding="UTF-8"?>
<pt:PrintTalk xmlns:xsi="http://www.w3.org/2001/XMLSchema-instance" xmlns:pt="http://www.printtalk.org"
xmlns="http://www.CIP4.org/JDFSchemas_1_1" xsi:noNamespaceSchemaLocation="printtalk.xsd" version="1.1"
payloadID="273743" timestamp="2002-09-05T900-0800">
  <pt:Header>
    <pt:From>
      <pt:Credential domain="DNS">
        <pt:Identity>www.texascabinet.com</pt:Identity>
      </pt:Credential>
      <pt:Credential domain="DUNS">
        <pt:Identity>05284945563</pt:Identity>
      </pt:Credential>
    </pt:From>
    <pt:To>
      <pt:Credential domain="ECompany.com">
        <pt:Identity>Print Dealer</pt:Identity>
      </pt:Credential>
      <pt:Credential domain="DUNS">
        <pt:Identity>063589998</pt:Identity>
      </pt:Credential>
    </pt:To>
    <pt:Sender>
      <pt:Credential domain="DNS">
        <pt:Identity>PrintORama.com</pt:Identity>
        <pt:SharedSecret>rosebud</pt:SharedSecret>
      </pt:Credential>
      <pt:UserAgent>PrintORama v.1.0</pt:UserAgent>
    </pt:Sender>
  </pt:Header>
  <pt:Request>
    <pt:PurchaseOrder AgentID="SteveP" AgentDisplayName="Steve Phillips" RequestDate="2002-09-05T900-
0800" BusinessID="6789" Currency="USD" Expires="2002-09-09T1700-0800">
      <JDF DescriptiveName="New Years Clearance sale" ID="JDF000-Root" JobID="0901-1266" Type="Product"
Status="Waiting" Version="1.1">
        <CustomerInfo CustomerID="952501" rRefs="Contact01">
          <ContactRef rRef="Contact01"/>
        </CustomerInfo>
        <ResourcePool>
          <Contact ID="Contact01" Class="Parameter" Status="Available" ContactTypes="Billing Delivery
Customer">
            <Address Street="42425 Maple Street" City="San Antonio" Region="TX" PostalCode="78294"/>
            <Person JobTitle="Marketing Officer" FirstName="John" FamilyName="Stockton"/>
            <Company ID="Company02" Class="Parameter" Status="Available" OrganizationName="Texas Cabinet
Company"/>
          </Contact>
          <DeliveryIntent ID="Delivery001" Class="Intent" rRefs="Contact01 Item001" Status="Available">
            <Method DataType="NameSpan" Preferred="UPS"/>
            <DropIntent>
              <Required DataType="TimeSpan" Preferred="2002-09-30T12:00-8:00"/>
              <ContactRef rRef="Contact01"/>
              <DropItemIntent Amount="100" Unit="1">
                <ComponentRef rRef="Item001"/>
              </DropItemIntent>
            </DropIntent>
            <Pricing Item="Total order" Price="1046.80">
              <Pricing Item="Total" Price="1012.80"/>
              <Pricing Item="Shipping and Handling" Price="34.00"/>
              <Pricing Item="Tax" HasPrice="false"/>
              <Pricing Item="Discount" HasPrice="false"/>
            <Payment>
              <PayTerm>2% 10, Net 30</PayTerm>
            </Payment>
          </DeliveryIntent>
        </ResourcePool>

```

```

<ResourceLinkPool>
  <DeliveryIntentLink rRef="Delivery001" Usage="Input"/>
</ResourceLinkPool>
<JDF DescriptiveName="Ordered Product" ID="JDF001" Type="Product" Status="Waiting">
  <ResourcePool>
    <!--ResourcePool only added as placeholder-->
  </ResourcePool>
  <ResourceLinkPool>
    <!--ResourceLinkPool only added as placeholder-->
  </ResourceLinkPool>
  <JDF>
    <!--Sub-JDF-node only added as placeholder-->
  </JDF>
</JDF>
</JDF>
</pt:PurchaseOrder>
</pt:Request>
</pt:PrintTalk>

```

PO3:

```

<?xml version="1.0" encoding="UTF-8"?>
<pt:PrintTalk xmlns:xsi="http://www.w3.org/2001/XMLSchema-instance" xmlns:pt="http://www.printtalk.org"
xmlns="http://www.CIP4.org/JDFSchema_1_1" xsi:noNamespaceSchemaLocation="printtalk.xsd" version="1.1"
payloadID="13474875" timestamp="2002-09-06T1000-0800">
  <pt:Header>
    <pt:From>
      <pt:Credential domain="DNS">
        <pt:Identity>Print Dealer</pt:Identity>
      </pt:Credential>
      <pt:Credential domain="DUNS">
        <pt:Identity>063589998</pt:Identity>
      </pt:Credential>
    </pt:From>
    <pt:To>
      <pt:Credential domain="AvalonPrinting.com">
        <pt:Identity>Avalon Printing</pt:Identity>
      </pt:Credential>
      <pt:Credential domain="DUNS">
        <pt:Identity>012737459</pt:Identity>
      </pt:Credential>
    </pt:To>
    <pt:Sender>
      <pt:Credential domain="DNS">
        <pt:Identity>PrintORama.com</pt:Identity>
        <pt:SharedSecret>catsndogs</pt:SharedSecret>
      </pt:Credential>
      <pt:UserAgent>PrintORama v.1.0</pt:UserAgent>
    </pt:Sender>
  </pt:Header>
  <pt:Request>
    <pt:PurchaseOrder AgentID="MLow" AgentDisplayName="Margaret Low" RequestDate="2002-09-06T1000-
0800" BusinessID="1111" Currency="USD" Expires="2002-09-10T1700-0800">
      <JDF DescriptiveName="Flyers" ID="JDF000-Root" JobID="0901-1299" Type="Product" Status="Waiting"
Version="1.1">
        <CustomerInfo CustomerID="752354" rRefs="Contact01">
          <ContactRef rRef="Contact01"/>
        </CustomerInfo>
        <ResourcePool>
          <Contact ID="Contact01" Class="Parameter" Status="Available" ContactTypes="Billing Customer">
            <Address Street="123 5th Street" City="New York" Region="NY" PostalCode="10024"/>
            <Person JobTitle="Sales Manager" FirstName="Bill" FamilyName="Mayers"/>
            <Company ID="Dealer01" Class="Parameter" Status="Available" OrganizationName="Print Dealer"/>
          </Contact>
          <Contact ID="Contact02" Class="Parameter" Status="Available" ContactTypes="Delivery">
            <Address Street="1745 First Street" City="Dublin" Region="OH" PostalCode="43202"/>
            <Person JobTitle="Sales Administrator" FirstName="June" FamilyName="Jones"/>
          </Contact>
        </ResourcePool>
      </JDF>
    </pt:PurchaseOrder>
  </pt:Request>
</pt:PrintTalk>

```

```

    <Company ID="Company01" Class="Parameter" Status="Available" OrganizationName="Fred's Fine
Rugs"/>
  </Contact>
  <Contact ID="Contact03" Class="Parameter" Status="Available" ContactTypes="Delivery">
    <Address Street="42425 Maple Street" City="San Antonio" Region="TX" PostalCode="78294"/>
    <Person JobTitle="Marketing Officer" FirstName="John" FamilyName="Stockton"/>
    <Company ID="Company02" Class="Parameter" Status="Available" OrganizationName="Texas Cabinet
Company"/>
  </Contact>
  <DeliveryIntent ID="Delivery001" Class="Intent" rRefs="Contact02 Contact03 Item001 Item002"
Status="Available">
    <Method DataType="NameSpan" Preferred="UPS"/>
    <DropIntent>
      <Required DataType="TimeSpan" Preferred="2002-09-22T09:30-8:00"/>
      <ContactRef rRef="Contact02"/>
      <DropItemIntent Amount="1" Unit="500">
        <ComponentRef rRef="Item001"/>
      </DropItemIntent>
      <Pricing Item="Total order" Price="883.10">
        <Pricing Item="Total" Price="871.10"/>
        <Pricing Item="Shipping and Handling" Price="12.00"/>
        <Pricing Item="Tax" HasPrice="false"/>
        <Pricing Item="Discount" HasPrice="false"/>
      <Payment>
        <PayTerm>2% 10, Net 30</PayTerm>
      </Payment>
    </DropIntent>
  </DropIntent>
  <Required DataType="TimeSpan" Preferred="2002-09-30T12:00-8:00"/>
  <ContactRef rRef="Contact03"/>
  <DropItemIntent Amount="100" Unit="1">
    <ComponentRef rRef="Item002"/>
  </DropItemIntent>
  <Pricing Item="Total order" Price="646.80">
    <Pricing Item="Total" Price="612.80"/>
    <Pricing Item="Shipping and Handling" Price="34.00"/>
    <Pricing Item="Tax" HasPrice="false"/>
    <Pricing Item="Discount" HasPrice="false"/>
  <Payment>
    <PayTerm>2% 10, Net 30</PayTerm>
  </Payment>
</Pricing>
</DropIntent>
</DeliveryIntent>
</ResourcePool>
<ResourceLinkPool>
  <DeliveryIntentLink rRef="Delivery001" Usage="Input"/>
</ResourceLinkPool>
<JDF DescriptiveName=" Winter Sales Promo" ID="JDF001" JobPartID="0901-1243" Type="Product"
Status="Waiting">
  <CustomerInfo rRefs="Contact02" Customer.JobName="0901-1243" CustomerOrderID="12345">
    <ContactRef rRef="Contact02"/>
  </CustomerInfo>
  <ResourcePool>
    <!--ResourcePool only added as placeholder-->
  </ResourcePool>
  <ResourceLinkPool>
    <!--ResourceLinkPool only added as placeholder-->
  </ResourceLinkPool>
  <JDF>
    <!--Sub-JDF-node only added as placeholder-->
  </JDF>
</JDF>
<JDF DescriptiveName=" New Years Clearance sale" ID="JDF002" JobPartID="0901-1266" Type="Product"
Status="Waiting">

```

```

    <CustomerInfo rRefs="Contact03" CustomerJobName="0901-1266" CustomerOrderID="6789">
      <ContactRef rRef="Contact03"/>
    </CustomerInfo>
    <ResourcePool>
      <!--ResourcePool only added as placeholder-->
    </ResourcePool>
    <ResourceLinkPool>
      <!--ResourceLinkPool only added as placeholder-->
    </ResourceLinkPool>
    <JDF>
      <!--Sub-JDF-node only added as placeholder-->
    </JDF>
  </JDF>
</pt:PurchaseOrder>
</pt:Request>
</pt:PrintTalk>

```

OrderStatusResponse1:

```

<?xml version="1.0" encoding="UTF-8"?>
<pt:PrintTalk xmlns:xsi="http://www.w3.org/2001/XMLSchema-instance" xmlns:pt="http://www.printtalk.org"
xmlns="http://www.CIP4.org/JDFSchemas_1_1" xsi:noNamespaceSchemaLocation="printtalk.xsd" version="1.1"
payloadID="187455" timestamp="2002-09-20T1000-0800">
  <pt:Header>
    <pt:From>
      <pt:Credential domain="AvalonPrinting.com">
        <pt:Identity>Avalon Printing</pt:Identity>
      </pt:Credential>
      <pt:Credential domain="DUNS">
        <pt:Identity>012737459</pt:Identity>
      </pt:Credential>
    </pt:From>
    <pt:To>
      <pt:Credential domain="DNS">
        <pt:Identity>Print Dealer</pt:Identity>
      </pt:Credential>
      <pt:Credential domain="DUNS">
        <pt:Identity>063589998</pt:Identity>
      </pt:Credential>
    </pt:To>
    <pt:Sender>
      <pt:Credential domain="DNS">
        <pt:Identity>PrintORama.com</pt:Identity>
        <pt:SharedSecret>newyork</pt:SharedSecret>
      </pt:Credential>
      <pt:UserAgent>PrintORama v.1.0</pt:UserAgent>
    </pt:Sender>
  </pt:Header>
  <pt:Request>
    <pt:OrderStatusResponse AgentID="PrintORama" AgentDisplayName="PrintORama Auto Generated"
RequestDate="2002-09-20T1000-0800" BusinessID="234" BusinessRefID="1111">
      <pt:Status JobIDRef="0901-1243">Shipped</pt:Status>
      <pt:Status JobIDRef="0901-1266">Shipped</pt:Status>
    </pt:OrderStatusResponse>
  </pt:Request>
</pt:PrintTalk>

```

OrderStatusResponse2:

```

<?xml version="1.0" encoding="UTF-8"?>
<pt:PrintTalk xmlns:xsi="http://www.w3.org/2001/XMLSchema-instance" xmlns:pt="http://www.printtalk.org"
xmlns="http://www.CIP4.org/JDFSchemas_1_1" xsi:noNamespaceSchemaLocation="printtalk.xsd" version="1.1"
payloadID="187655" timestamp="2002-09-20T1030-0800">
  <pt:Header>
    <pt:From>
      <pt:Credential domain="DNS">

```

```

    <pt:Identity>Print Dealer</pt:Identity>
  </pt:Credential>
  <pt:Credential domain="DUNS">
    <pt:Identity>063589998</pt:Identity>
  </pt:Credential>
</pt:From>
<pt:To>
  <pt:Credential domain="DNS">
    <pt:Identity>www.fredsfinerugs.com</pt:Identity>
  </pt:Credential>
  <pt:Credential domain="DUNS">
    <pt:Identity>063887745</pt:Identity>
  </pt:Credential>
</pt:To>
<pt:Sender>
  <pt:Credential domain="DNS">
    <pt:Identity>PrintORama.com</pt:Identity>
    <pt:SharedSecret>catsndogs</pt:SharedSecret>
  </pt:Credential>
  <pt:UserAgent>PrintORama v.1.0</pt:UserAgent>
</pt:Sender>
</pt:Header>
<pt:Request>
  <pt:OrderStatusResponse AgentID="Dealer" AgentDisplayName="Dealer User" RequestDate="2002-09-
20T1030-0800" BusinessID="1222" BusinessRefID="12345">
    <pt:Status JobIDRef="0901-1243">Shipped</pt:Status>
  </pt:OrderStatusResponse>
</pt:Request>
</pt:PrintTalk>

```

OrderStatusResponse3:

```

<?xml version="1.0" encoding="UTF-8"?>
<pt:PrintTalk xmlns:xsi="http://www.w3.org/2001/XMLSchema-instance" xmlns:pt="http://www.printtalk.org"
xmlns="http://www.CIP4.org/JDFSchemas_1_1" xsi:noNamespaceSchemaLocation="printtalk.xsd" version="1.1"
payloadID="187655" timestamp="2002-09-20T1030-0800">
  <pt:Header>
    <pt:From>
      <pt:Credential domain="DNS">
        <pt:Identity>Print Dealer</pt:Identity>
      </pt:Credential>
      <pt:Credential domain="DUNS">
        <pt:Identity>063589998</pt:Identity>
      </pt:Credential>
    </pt:From>
    <pt:To>
      <pt:Credential domain="DNS">
        <pt:Identity>www.texascabinet.com</pt:Identity>
      </pt:Credential>
      <pt:Credential domain="DUNS">
        <pt:Identity>05284945563</pt:Identity>
      </pt:Credential>
    </pt:To>
    <pt:Sender>
      <pt:Credential domain="DNS">
        <pt:Identity>PrintORama.com</pt:Identity>
        <pt:SharedSecret>catsndogs</pt:SharedSecret>
      </pt:Credential>
      <pt:UserAgent>PrintORama v.1.0</pt:UserAgent>
    </pt:Sender>
  </pt:Header>
  <pt:Request>
    <pt:OrderStatusResponse AgentID="Dealer" AgentDisplayName="Dealer User" RequestDate="2002-09-
20T1030-0800" BusinessID="1223" BusinessRefID="6789">
      <pt:Status JobIDRef="0901-1266">Shipped</pt:Status>
    </pt:OrderStatusResponse>
  </pt:Request>

```


</pt:PrintTalk>