

PrintTalk

Version 1.3

Date: 2007-10-30

File: *PrintTalk-1.3.doc, .pdf*

Abstract

PrintTalk is an open XML standard to communicate business information used in the Graphic Arts industry. It is maintained by the CIP4 consortium.



Legal Notice

USE OF THIS DOCUMENT IS SUBJECT TO THE FOLLOWING CONDITIONS WHICH ARE DEEMED ACCEPTED BY ANY PERSON OR ENTITY MAKING USE HEREOF.

Copyright Notice

Copyright © 2000-2007, International Cooperation for the Integration of Processes in Prepress, Press and Postpress (CIP4) with registered office in Zurich, Switzerland. All Rights Reserved.

CIP4 hereby grants to any person or entity obtaining a copy of the Specification and associated documentation files (the "Specification") a perpetual, worldwide, non-exclusive, fully paid-up, royalty-free copyright license to use, copy, publish, distribute, publicly display, publicly perform, and/or sublicense the Specification in whole or in part verbatim and without modification, unless otherwise expressly permitted by CIP4, subject to the following conditions. This legal notice must be included in all copies containing the whole or substantial portions of the Specification. Copies of excerpts of the Specification which do not exceed five (5) pages must include the following short form Copyright Notice: Copyright © 2000-2007, International Cooperation for the Integration of Processes in Prepress, Press and Postpress (CIP4) with registered office in Zurich, Switzerland.

Trademarks and Tradenames

International Cooperation for the Integration of Processes in Prepress, Press and Postpress, CIP4, Job Definition Format, JDF, Job Messaging Format, JMF and the CIP4 logo are trademarks of CIP4. Rather than put a trademark symbol in every occurrence of other trademarked names, we state that we are using the names only in an editorial fashion, and to the benefit of the trademark owner, with no intention of infringement of the trademark.

Except as contained in this legal notice or as allowed by membership in CIP4, the name of CIP4 must not be used in advertising or otherwise to promote the use or other dealings in this Specification without prior written authorization from CIP4.

Waiver of Liability

THE JDF SPECIFICATION IS PROVIDED AS IS, WITHOUT WARRANTY OF ANY KIND, EXPRESS, IMPLIED, OR OTHERWISE, INCLUDING BUT NOT LIMITED TO THE WARRANTIES OF MERCHANTABILITY, FITNESS FOR A PARTICULAR PURPOSE AND NONINFRINGEMENT. IN NO EVENT WILL CIP4 BE LIABLE FOR ANY CLAIM, DAMAGES OR OTHER LIABILITY, WHETHER IN AN ACTION OF CONTRACT, TORT OR OTHERWISE, ARISING FROM, OUT OF, OR IN CONNECTION WITH THE JDF SPECIFICATION OR THE USE OR OTHER DEALINGS IN THE JDF SPECIFICATION.

Table of Contents

1	Introduction	6
1.1	Intended Audience	6
2	Glossary	6
3	PrintTalk Structure.....	7
3.1	XML Declaration.....	8
3.2	PrintTalk Node	8
3.3	Header.....	9
3.3.1	Example of a Header.....	10
3.3.2	From.....	11
3.3.3	To.....	11
3.3.4	Sender	11
3.3.5	Credential.....	11
3.4	Request	12
3.5	Response.....	12
3.6	Abstract Elements.....	12
3.6.1	Abstract pt.....	12
3.6.2	Abstract BusinessObject.....	13
3.7	Business Objects.....	14
3.7.1	RFQ	17
3.7.2	Quotation	18
3.7.3	PurchaseOrder.....	23
3.7.4	Confirmation.....	24
3.7.5	Cancellation	25
3.7.6	Refusal	25
3.7.7	OrderStatusRequest	26
3.7.8	OrderStatusResponse.....	27
3.7.9	ProofApprovalRequest.....	28
3.7.10	ProofApprovalResponse.....	29
3.7.11	Invoice	31
3.7.12	ReturnJob.....	31
4	PrintTalk Workflow Diagrams.....	32
4.1	Complete Workflow for PrintTalk.....	32
4.2	Complete Workflow for PrintTalk.....	32
4.3	Workflow for a Change Order.....	34
4.4	Workflow for Proofing	36
4.5	Workflow for Status Request.....	37
5	Usage of the PrintTalk IDs.....	37
5.1	BusinessID and BusinessRefID:.....	37
5.1.1	Simple Negotiation	37
5.1.2	Change Order Initated by Print Buyer and Starting with RFQ	38
5.1.3	Change Order Initated by Print Buyer and Starting with PurchaseOrder	38
5.1.4	Change Order Initated by Print Provider and Starting with Quotation	38
5.1.5	Complex Negotiation.....	38
5.2	ReplaceID	39
5.2.1	Print Buyer Supercedes RFQ.....	39
5.2.2	Print Buyer Supercedes PurchaseOrder	39
5.2.3	Print Provider Supercedes Quotation.....	39
5.3	ReorderID	39
5.3.1	Print Buyer Reorders via an RFQ.....	39
5.3.2	Print Buyer Reorders via an PurchaseOrder	39
5.3.3	Print Provider Quotes using ReorderID	40
5.4	JDF/@JobID:.....	40
5.5	JDF/@JobPartID.....	40
5.6	JDF/ResourcePool/CustomerInfo/@CustomerOrderID.....	40

6	Examples	41
6.1	Example A – “Learn to Fly” Mailer	41
6.1.1	Outline of JDF Structure.....	41
6.1.2	Text Version of RFQ	42
6.1.3	PrintTalk Version of RFQ.....	42
6.2	Example B – Bible.....	48
6.2.1	Outline of JDF Structure.....	48
6.2.2	PrintTalk Version of RFQ.....	50
6.2.3	PrintTalk Version of Quotation	55
6.3	Example C – Sunrise PurchaseOrder	60
6.3.1	Text Version of RFQ	60
6.3.2	PrintTalk Version of RFQ.....	62
6.4	Example D – Collaboration Scenario	64
6.4.1	PrintTalk Version of PurchaseOrder for Print Buyer PB1	65
6.4.2	PrintTalk Version of PurchaseOrder for Print Buyer PB2	66
6.4.3	PrintTalk Version of PurchaseOrder for Dealer.....	68
6.4.4	PrintTalk Version of OrderStatusResponse (1) for Dealer	71
6.4.5	PrintTalk Version of OrderStatusResponse (2) for Print Buyer PB1	71
6.4.6	PrintTalk Version of OrderStatusResponse (3) for Print Buyer PB2.....	72
7	References.....	73
7.1	Normative References	73
7.2	Informative References.....	73

Figures

Figure 1: Structure of PrintTalk Node	8
Figure 2: Legend.....	32
Figure 3: Complete Workflow for PrintTalk	33
Figure 4: Workflow for a Change Order	34
Figure 5: Workflow for a Proofing.....	36
Figure 6: Workflow for a Status Request	37
Figure 7: Outline of JDF Structure for the “Bible” Example	50
Figure 8: Diagram of Business Transactions among Four Collaborating Parties	64

Tables

Table 1: Glossary.....	6
Table 2: PrintTalk	9
Table 3: Header	9
Table 4: From	11
Table 5: To	11
Table 6: Sender.....	11
Table 7: Credential	11
Table 8: Request.....	12
Table 9: Abstract pt.....	13
Table 10: jdf:GeneralID – pt.....	13
Table 11: Abstract BusinessObject.....	14
Table 12: List of BusinessObject Elements.....	15
Table 13: RFQ	17
Table 14: Quotation.....	18
Table 15: Quote	19
Table 16: Pricing	20
Table 17: Price.....	20
Table 18: Additional.....	22
Table 19: Payment	22

Table 20: jdf:GeneralID – Payment.....	22
Table 21: CreditCard	23
Table 22: PurchaseOrder	24
Table 23: Confirmation	24
Table 24: Cancellation.....	25
Table 25: Refusal.....	25
Table 26: OrderStatusRequest	26
Table 27: StatusRequest	26
Table 28: OrderStatusResponse.....	27
Table 29: Status	28
Table 30: ProofApprovalRequest	28
Table 31: ProofRequest	29
Table 32: ProofApprovalResponse	29
Table 33: ProofResponse.....	30
Table 34: Invoice	31
Table 35: ReturnJob.....	31

1 Introduction

PrintTalk is an XML standard that provides a single format for *Print Providers* to collaboratively communicate *Business Transactions* and specifications of *Print Product* both with their *Print Buyers* and among themselves. Print industry professionals from a wide range of organizations contributed to the design of PrintTalk. Such organizations include eCommerce companies, print Business Management Systems, *Print Providers*, and print equipment manufactures.

The PrintTalk standard embraces [JDF1.3] and [cXML]. These bracketed references are defined in Section 7 “References”. By incorporating PrintTalk, JDF has been enhanced to provide a richer descriptive capability. While JDF describes the piece to be produced, PrintTalk specifies the external communication of business processes between *Print Provider* and *Print Buyer*.

With the extensions made for PrintTalk 1.3, it may also be used for subcontracting. For details about JDF, see [JDF1.3].

The PrintTalk interface specification is distributed free of any license fees or royalties in order to address the need for end-to-end connectivity in the printing industry.

The following pages describe the *Business Objects* that make up PrintTalk. See section 3.7 “Business Objects” for a complete list of *Business Objects* and a description of each.

1.1 Intended Audience

While print industry professionals may find parts of this specification to be useful; our primary goal is to describe the PrintTalk protocol to programmers who wish to implement the PrintTalk interface specification within their software products. A working knowledge of XML and familiarity with JDF is required to fully understand this document.

2 Glossary

This section defines terminology used throughout this document. References to other documents are indicated with square brackets, e.g. [JDF1.3]. For most terms, see the Terminology section in [JDF1.3].

Table 1: Glossary

Term	Definition
<i>Business Object</i>	The portion of a <i>PrintTalk Document</i> that describes a <i>Business Transaction</i> . For example an RFQ <i>Business Object</i> describes a request-for-quote <i>Business Transaction</i> and a PurchaseOrder <i>Business Object</i> describes a purchase order <i>Business Transaction</i> .
<i>Business Transaction</i>	When a <i>Print Buyer</i> sends a <i>PrintTalk Document</i> to a <i>Print Provider</i> , or a <i>Print Provider</i> sends a <i>PrintTalk Document</i> to a <i>Print Buyer</i> , the <i>Business Object</i> within the <i>PrintTalk Document</i> describes a <i>Business Transaction</i> between the <i>Print Buyer</i> and <i>Print Provider</i>
<i>Change Order</i>	A <i>Business Transaction</i> that requests changes to <i>Confirmed Job</i> .
<i>Confirmed Job</i>	A Job (producing <i>Print Product</i>) that a <i>Print Buyer</i> and <i>Print Provider</i> have agreed to after negotiating a contract for it. The <i>Print Provider</i> consummates the agreement by confirming the <i>Print Buyer's</i> purchase order.
<i>Invalid</i>	When used in the context of a <i>Business Object</i> , it refers to a <i>Business Object</i> that is no longer <i>Pending</i> and is thus no longer accessible.

Term	Definition
Item	Something that is priced separately in a quote.
Negotiation Phase	The phase during which a <i>Print Buyer</i> and <i>Print Provider</i> negotiate a contract for <i>Print Product</i> by exchanging <i>Business Objects</i> . The <i>Production Phase</i> follows the <i>Negotiation Phase</i> .
Pending Business Object	A <i>Business Object</i> that other <i>Business Objects</i> can reference via @BusinessRefID and @ReplaceID. A <i>Business Object</i> X is <i>Pending</i> from the time a <i>Print Buyer</i> or <i>Print Provider</i> creates it until: <ul style="list-style-type: none"> • it expires, • its creator sends a Cancellation whose @BusinessRefID references X, or • its creator sends a <i>Business Object</i> whose @ReplaceID references X.
Pending	When used in the context of a <i>Business Object</i> , it refers to a <i>Pending Business Object</i> .
Print Buyer	The customer that is buying <i>Print Product</i> .
Print Provider	The Producer of the <i>Print Product</i> .
Print Product	The printed matter produced according to a contract negotiated between the <i>Print Buyer</i> and <i>Print Provider</i> using the PrintTalk negotiation process
PrintTalk Document	An XML document whose Root Element has a Type of "PrintTalk" and which follows the rules of this document, the PrintTalk 1.3 specification.
Production Phase	The phase during which a <i>Print Provider</i> produces and ships <i>Print Product</i> .
Re-Quote	An additional Quotation for a variation in a Job, for which the <i>Print Provider</i> has already issued a Quotation.
Superseded Business Object	When a <i>Print Buyer</i> or <i>Print Provider</i> sends a <i>Business Object</i> X with a @ReplaceID that references some other <i>Business Object</i> Y of the same type, <i>Business Object</i> Y becomes a <i>Superseded Business Object</i> and <i>Business Object</i> X become a <i>Pending Business Object</i> , A <i>Superseded Business Object</i> is <i>Invalid</i> and not <i>Pending</i> .
Supersede	If <i>Business Object</i> X <i>Supersedes</i> <i>Business Object</i> Y, <i>Business Object</i> X becomes a <i>Pending Business Object</i> and <i>Business Object</i> Y becomes a <i>Superseded Business Object</i> .
Superseding Business Object	A <i>Business Object</i> that <i>Supersedes</i> some other <i>Business Object</i> .

3 PrintTalk Structure

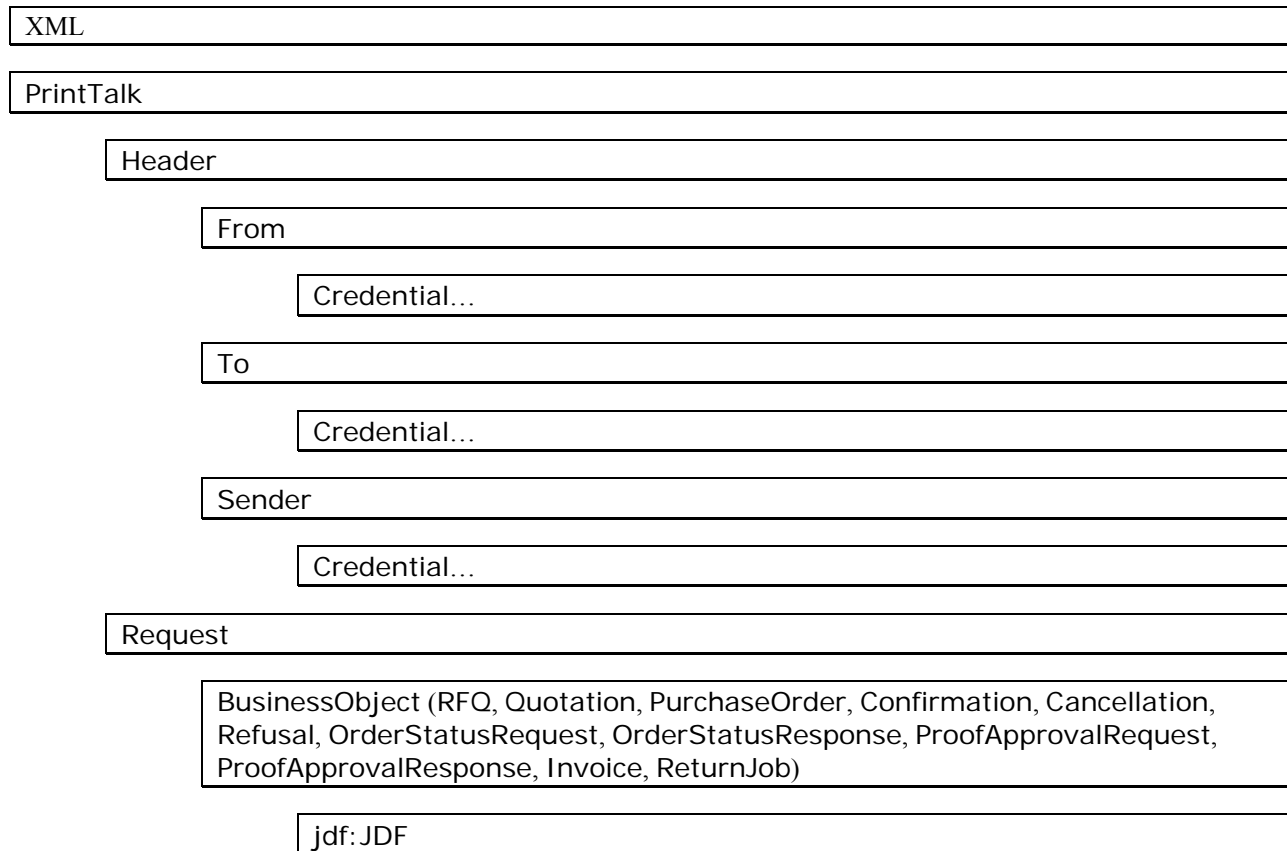
A *PrintTalk Document* is JDF wrapped in PrintTalk, which is similar to cXML. Like cXML, the top two Elements of a *PrintTalk Document* MUST be a Header Element and a Request Element. The Header concept comes directly from cXML, and identifies the parties involved in this correspondence. The Request Element MUST contain exactly one PrintTalk *Business Object*.

Whenever Elements or Attributes are specified with a "jdf" namespace prefix, this prefix specifies the presence of that Element from the JDF namespace @xmlns:jdf="http://www.CIP4.org/JDFSchema_1_1". A PrintTalk implementation MUST Support standard namespace handling as defined in [XMLNS]. Thus the prefix "jdf:" is used as an example only. Any Element from the JDF namespace MAY be specified with any prefix conforming to [XMLNS], including the default (empty) namespace prefix.

This document does not specify the transport for a PrintTalk Object. The selection of transport is left to the implementer. For example, a PrintTalk Object might be sent via email as an attachment, or it might be sent via HTTP using the PUT or GET Method.

The following pages provide a detailed explanation of each PrintTalk Element. Figure 1 shows a high level view of the PrintTalk structure, where each box represents either an XML declaration (the first one) or a PrintTalk Element.

Figure 1: Structure of PrintTalk Node



3.1 XML Declaration

A *PrintTalk Document* MUST start with the standard XML Declaration. An example is:

```
<?xml version="1.0" encoding="utf-8"?>
```

3.2 PrintTalk Node

The Root Element in a *PrintTalk Document* MUST be an Element whose type is "PrintTalk". An example is:

```
<PrintTalk version="1.3" payloadID="107778" Timestamp="2005-02-01T22:39Z"
  xmlns="http://www.printtalk.org/schema_13">
  ...
</PrintTalk >
```


Table 2: PrintTalk

Name	Data Type	Description
<i>version</i>	string	The version of PrintTalk. The current release is "1.3".
<i>payloadID</i>	string	From cXML: A unique number with respect to space and time, used for logging purposes to identify documents that might have been lost or had problems. This value SHOULD not change for retry attempts.
<i>Timestamp</i>	dateTime	From cXML: The date and time the message was sent, in [ISO8601] format. <i>TimeStamP</i> MUST NOT change for retry attempts.
<i>xmlns ?</i>	URI	PrintTalk Supports use of XML namespaces. The namespace MUST be declared in the PrintTalk Element. For details on using namespaces in XML, see [XMLNS]. For version 1.3 of PrintTalk, <i>xmlns</i> = " <i>http://www.printtalk.org/schema_13</i> ".
Header	element	The Header defined in [cXML]. See Table 3: Header.
Request	element	The Request defined in [cXML] and as further specified in this document. See Table 8: Request.

3.3 Header

The Header Element comes directly from [cXML]. Refer to the *cXML Users Guide* [cXMLUG].

From cXML: The From, To, and Sender Elements allow receiving systems to identify and authorize parties. The From and To Elements in a document do not change. However, as the document travels to its destination, intermediate Nodes (such as Ariba Network) may change the Sender Element.

For example, in an RFQ, the From party is the *Print Buyer*. The To party is the *Print Provider*. In the subsequent Quotation, those roles are reversed. The Sender is always the party sending the message.

Table 3: Header
Referenced by: PrintTalk

Name	Data Type	Description
From	element	From cXML: identifies the originator of the cXML request. See Table 4: From.
To	element	From cXML: identifies the destination of the cXML request. See Table 5: To.
Sender	element	From cXML: allows the receiving party to identify and authenticate the party that opened the HTTP connection. It contains a stronger authentication Credential than the ones in the From or To Elements, because the receiving party must authenticate who is asking it to perform work.

Name	Data Type	Description
		See Table 6: Sender.

3.3.1 Example of a Header

The following is an example of a Header taken from a Quotation. In this example, the “To” party is a *Print Buyer* company called “PeterPan”. The DUNS number uniquely identifies them. The “From” party is a *Print Provider*. It too, is uniquely identified by a DUNS number. The “Sender” is the party sending this *PrintTalk Document*. In this case, it’s an eCommerce company. The SharedSecret Element is a password known to (at least) the eCommerce company and the “To” party.

The content and exact format of this section depends on the specific implementation. All parties SHOULD agree to the format prior to sending messages.

```

<Header>
  <From>
    <Credential domain="DNS">
      <Identity>AnExcellentPrinter.com</Identity>
    </Credential>
    <Credential domain="ECompany.com">
      <Identity>Polkadot</Identity>
    </Credential>
    <Credential domain="DUNS">
      <Identity>3040392</Identity>
    </Credential>
  </From>
  <To>
    <Credential domain="DNS">
      <Identity>pan-o-ramic.com</Identity>
    </Credential>
    <Credential domain="ECompany.com">
      <Identity>PeterPan</Identity>
    </Credential>
    <Credential domain="DUNS">
      <Identity>93009388</Identity>
    </Credential>
  </To>
  <Sender>
    <Credential domain="DNS">
      <Identity>ECompany.com</Identity>
      <SharedSecret>rosebud</SharedSecret>
    </Credential>
    <UserAgent>Print Buyer v.54.9</UserAgent>
  </Sender>
</Header>

```

3.3.2 From

Table 4: From
Referenced by: Header

Name	Data Type	Description
Credential +	element	See Table 7: Credential.

3.3.3 To

Table 5: To
Referenced by: Header

Name	Data Type	Description
Credential +	element	See Table 7: Credential.

3.3.4 Sender

Table 6: Sender
Referenced by: Header

Name	Data Type	Description
Credential +	element	See Table 7: Credential.

3.3.5 Credential

A Credential identifies and authenticates the various parties involved in a transaction.

Table 7: Credential
Referenced by: From, To, Sender

Name	Data Type	Description
<i>domain</i>	string	<p>From cXML: Specifies the type of credential. This Attribute allows documents to contain multiple types of credentials for multiple authentication domains.</p> <p>From cXML: For messages sent on Ariba Supplier Network, for instance, the domain can be "AribaNetworkUserId" to indicate an email address, DUNS for a D-U-N-S number, or "NetworkId" for a preassigned ID.</p>

Name	Data Type	Description
<i>type</i> ?	string	See the [cXMLUG].
Identity	telem	From cXML: The text in the Element states who the Credential represents. For example, the text might be an email address or some other unique string of characters. See [cXMLUG].
SharedSecret ?	element	See [cXMLUG].
CredentialMac ?	element	See [cXMLUG].

3.4 Request

The Request Element comes from [cXML]. However, its child BusinessObject is defined in PrintTalk but not in [cXML].

Table 8: Request
Referenced by: PrintTalk

Name	Data Type	Description
BusinessObject	element	A PrintTalk Request MUST contain exactly one BusinessObject. See Table 11: Abstract BusinessObject.

3.5 Response

If the PrintTalk document is sent over a synchronous protocol, e.g. HTTP, then a valid cXML response MUST be generated. See [cXML] for details, including a discussion of error handling and error codes in the Response.

3.6 Abstract Elements

PrintTalk has two Abstract Element types that other Elements inherit from.

3.6.1 Abstract pt

All Elements in the PrintTalk namespace inherit from the Abstract pt Element. That is, every descendant of the Request Element inherits from the Abstract pt Element, either directly or indirectly through the Abstract BusinessObject (see Table 11: Abstract BusinessObject).

Table 9: Abstract pt

Superclass of: Abstract BusinessObject, Quote, Pricing, Price, Additional, Payment, CreditCard, StatusRequest, Status, ProofRequest, ProofResponse

Name	Data Type	Description
<i>DescriptiveName ?</i>	string	Display text for this Element.
jdf:Comment *	telem	Comment text that contains free form information about the Element. See JDF “Generic Element” for the definition of the Comment Element. See [JDF1.3].
jdf:GeneralID * New in PrintTalk 1.3	element	Optional parameters for a <i>Business Transaction</i> . GeneralID Elements MAY be used e.g. to carry a system's internal IDs. Generally both parties MUST agree on the semantics of these IDs in an out-of-band communication. Note: a GeneralID references a <i>Business Object</i> that is a secondary parameter in a <i>Business Transaction</i> , whereas @BusinessRefID references a <i>Business Object</i> that is the primary parameter in a <i>Business Transaction</i> . See Table 10: jdf:GeneralID – pt.

3.6.1.1 jdf:GeneralID – pt

This section specifies particular PrintTalk values in Abstract pt for **jdf:GeneralID**.

Table 10: jdf:GeneralID – pt

Referenced by: Abstract pt

Name	Data Type	Description
<i>IDUsage</i>	NMTOKEN	Values include:
<i>RFQID</i>		<i>BusinessID</i> of the initial RFQ.
<i>QuoteID</i>		<i>BusinessID</i> of the initial Quotation.
<i>PurchaseOrderID</i>		<i>BusinessID</i> of the initial PurchaseOrder.
<i>all remaining values</i>		Application specific identifier.
<i>IDValue</i>	string	The value of the identifier that <i>IDUsage</i> specifies.

3.6.2 Abstract BusinessObject

All *Business Objects* in PrintTalk (e.g. RFQ) extend the Abstract BusinessObject Element. The Abstract BusinessObject Element itself extends the Abstract pt Element.

Table 11 below describes the contents of the Abstract BusinessObject Element. For a detailed description of each Data Type see [JDF1.3].

Each individual BusinessObject within PrintTalk inherits all of the Attributes and Elements of the Abstract BusinessObject Element, which in turn inherits all Attributes and Elements of the Abstract pt Element.

Each Business Object has additional Attributes and Elements that are defined in a subsection of section 3.7 “Business Objects”. Three of these Business Objects (RFQ, Quotation and PurchaseOrder) have a jdf:JDF Node. Credentials related to the context of the Business Object MUST be extracted from the PrintTalk/Header.

Table 11: Abstract BusinessObject

Referenced by: Request

Subclass of: Abstract pt

Superclass of: RFQ, Quotation, PurchaseOrder, Confirmation, Cancellation, Refusal, OrderStatusRequest, OrderStatusResponse, ProofApprovalRequest, ProofApprovalResponse, Invoice, ReturnJob

Name	Data Type	Description
<i>AgentID</i>	NMTOKEN	The unique identity of the user that “pushed the button” to send this <i>PrintTalk Document</i> , for example, a <i>Print Buyer</i> in an RFQ or a <i>Print Provider's</i> estimator in a Quotation.
<i>AgentDisplayName</i>	string	The display name of the user that is identified by <i>AgentID</i> .
<i>AuxID?</i> Modified in PrintTalk 1.3	string	<i>AuxID</i> is used as a reference to the <i>Print Buyer's</i> internal system ID by the sender. An <i>AuxID</i> MUST be used to carry a system’s internal ID. Modification note: starting with PrintTalk 1.3, MUST use pt/jdf:GeneralID for any IDs other than the <i>Print Buyer's</i> internal system ID.
<i>BusinessID</i>	NMTOKEN	The unique identifier for this <i>Business Object</i> .
<i>BusinessRefID?</i>	NMTOKEN	The value of this <i>BusinessRefID</i> MUST be the same as the <i>BusinessID</i> of some other <i>Pending Business Object</i> which acts as the primary parameter to the <i>Business Transaction</i> that this <i>PrintTalk Document</i> represents. See pt/GeneralID for secondary parameters. A <i>BusinessRefID</i> MUST refer to a <i>Business Object</i> that was received from the other party. For example, a Quotation/@BusinessRefID references an RFQ if it provides a quote for the RFQ, or it references a PurchaseOrder if it specifies a <i>Change Order</i> .
<i>RequestDate</i> Deprecated in PrintTalk 1.3	dateTime	Date/time when this <i>Business Object</i> was sent. Deprecation note: starting with PrintTalk 1.3, use PrintTalk/@Timestamp.

3.7 Business Objects

For a *Print Buyer* and a *Print Provider* to negotiate a contract for *Print Product*, they MUST exchange one or more of the following *Business Objects*: RFQ, Quotation, PurchaseOrder, Confirmation, Cancellation and Refusal.

After a contract has been consummated, either a *Print Buyer* or a *Print Provider* MAY initiate a *Change Order*. The negotiation of the *Change Order* is performed with the same *Business Objects* as the initial negotiation – RFQ, Quotation, PurchaseOrder, Confirmation, Cancellation, and Refusal. The contract, which both parties have agreed on during previous negotiations, is valid during the whole *Change Order* process. However the *Print Provider* may halt production of the *Print Product*. The old contract is replaced only if there is a new agreement on a *Change Order* (expressed by the new Confirmation sent by the *Print Provider*). If the *Change Order* process terminates with a Refusal of a *Business Object*, an expired *Business Object*, or Cancellation of a *Business Object*, the *Change Order* process fails and production continues as originally planned before the *Change Order* was proposed.

During the *Production Phase*, interactions other than *Change Orders* can take place between the *Print Buyer* and *Print Provider*. The *Print Buyer* MAY send one or more OrderStatusRequest Elements and receive an OrderStatusResponse from each request. The *Print Provider* MAY send unsolicited OrderStatusResponse Elements. The *Print Provider* MAY send one or more ProofApprovalRequest Elements and receive a ProofApprovalResponse from each request.

Either the *Print Buyer* or the *Print Provider* MAY send a Cancellation for the Job during the *Production Phase*, which generally leads to a final Invoice that conforms to the *Print Provider's* terms and conditions.

The *Print Provider* MAY send Invoice Elements to the *Print Buyer* after delivery of the *Print Product* as well as at various milestones.

After the *Production Phase* is finished, the *Print Provider* MAY send back information about the produced Job using a ReturnJob Element.

The following table lists the *Business Objects* that a PrintTalk implementation MUST Support. Each *Business Object* corresponds to a *Business Transaction* used in the commercial print industry. The list may expand in the future as the PrintTalk specification grows to Support other *Business Transactions* and new areas of the industry.

The table columns are:

- Column 1: specifies the name of a *Business Object* and is a hotlink to a subsection on it.
- Column 2: describes the *Business Object*.
- Column 3: specifies the *Business Objects* which the named *Business Object* can reference via @BusinessRefID. The value “None” means that the @BusinessRefID MAY be absent from the *Business Object*.
- Column 4: specifies the direction of the *Business Transaction*, between the *Print Buyer* (shown as “B”) and *Print Provider* (shown as “P”). In the cases with the two-headed arrow, the *Business Transaction* can be in either direction.

Table 12: List of BusinessObject Elements

Name	Description	References	Flow
RFQ	A Request for Quote that a <i>Print Buyer</i> sends to a <i>Print Provider</i> .	None, Quotation, Confirmation	B→P
Quote Deprecated in PrintTalk 1.3	A Quote MAY be sent in response to a RFQ. The Quote may contain very detailed information about the printing Processes intended to create the Product defined by the RFQ or it may contain only basic price and billing information. As with traditional quotes, providing the <i>Print Buyer</i> with detailed information lessens the chance of a misunderstanding. The <i>Re-Quote</i> and <i>Change Order Quote</i>	RFQ, PurchaseOrder, Confirmation	B←P

Name	Description	References	Flow
	<p>variations are included within Quote. A Quote may <i>Supersede</i> an existing Quote before the <i>Print Buyer</i> has answered with an RFQ or a PurchaseOrder.</p> <p>Deprecation note: starting with PrintTalk 1.3, Quote Elements MUST be nested in Quotation <i>Business Objects</i>.</p>		
Quotation New in PrintTalk 1.3	<p>A <i>Print Provider</i> sends a Quotation to a <i>Print Buyer</i> to provide one or more quotes for a Job.</p> <p>Note: Quotation replaces the Quote <i>Business Object</i> starting with PrintTalk 1.3.</p>	RFQ, PurchaseOrder	B←P
PurchaseOrder	<p>A <i>Print Buyer</i> sends a PurchaseOrder to a <i>Print Provider</i> to purchase <i>Print Product</i> that is specified in a Quotation.</p>	None, Quotation, Confirmation	B→P
Confirmation	<p>A <i>Print Provider</i> sends a Confirmation if it accepts a PurchaseOrder</p>	PurchaseOrder	B←P
Cancellation	<p>A Cancellation cancels a <i>Business Object</i>.</p>	RFQ, Quotation, PurchaseOrder, Confirmation	B↔P
Refusal	<p>A Refusal declines a received <i>Business Object</i></p>	RFQ, Quotation, PurchaseOrder	B↔P
OrderStatusRequest	<p>A <i>Print Buyer</i> sends an OrderStatusRequest to the <i>Print Provider</i> for details of the order status</p>	PurchaseOrder	B→P
OrderStatusResponse	<p>A <i>Print Provider</i> sends to a <i>Print Buyer</i> an OrderStatusResponse either automatically or as the response to an OrderStatusRequest.</p>	PurchaseOrder, OrderStatusRequest	B←P
ProofApprovalRequest	<p>A <i>Print Provider</i> sends a ProofApprovalRequest to the <i>Print Buyer</i> to request an approval of a Proof.</p>	PurchaseOrder	B←P
ProofApprovalResponse	<p>A <i>Print Buyer</i> sends a to a <i>Print Provider</i> ProofApprovalResponse as the response to a ProofApprovalRequest.</p>	ProofApprovalRequest	B→P
Invoice	<p>A <i>Print Provider</i> sends an an Invoice to a <i>Print Buyer</i> to request payment.</p>	PurchaseOrder, Cancellation	B←P
ReturnJob New in PrintTalk 1.3	<p>A <i>Print Provider</i> sends a ReturnJob to a <i>Print Buyer</i> to provide production information for the Job.</p>	PurchaseOrder	B←P

3.7.1 RFQ

A *Print Buyer* sends an RFQ to a *Print Provider* to request a quote. Usually the *Negotiation Phase* starts with an RFQ. Sometimes, the *Negotiation Phase* starts with a Quotation or PurchaseOrder (see sections 3.7.2 “Quotation” and 3.7.3 “PurchaseOrder”).

An RFQ MUST convey the unambiguous intentions of the *Print Buyer* to the *Print Provider*. A complex RFQ MAY contain options that specify several types of acceptable materials or methods required by the *Print Buyer*. An RFQ MAY contain other options that require the *Print Provider's* estimator to generate more than one quoted price in the response.

A *Print Buyer* sends an RFQ whose semantics vary depending on *BusinessRefID*.

Not specified: If a *Print Buyer* chooses to initiate a new Product process by making a request-for-quote to a *Print Provider*. It MUST send an RFQ with no *BusinessRefID*.

Quotation: If a *Print Buyer* receives a Quotation for a Job and wants a *Re-Quote* for a variation of the Job, it MUST send an RFQ whose *BusinessRefID* references the received Quotation.

Confirmation: If a *Print Buyer* wants to initiate a *Change Order* for a *Confirmed Job* and the PurchaseOrder form of a *Change Order* cannot be used because there are changes that don't have quotes, the *Print Buyer* MUST send an RFQ whose *BusinessRefID* references the Confirmation for the *Confirmed Job*. A *Change Order* (CO) RFQ asks what the consequences would be for a certain change of the *Print Product*. See 3.7.3 “PurchaseOrder” for an alternate *Change Order* that a *Print Buyer* can send.

After the *Print Buyer* has sent an RFQ and while it is *Pending*, the *Print Buyer* MAY send either:

- a *Superseding* RFQ that replaces the *Pending* one or.
- an unrelated RFQ or
- a Cancellation for a *Pending* RFQ after which the *Print Buyer* MAY choose to continue the negotiation process by sending either a new RFQ or a new PurchaseOrder for a *Pending* Quotation. A *Pending* Quotation exists only if the cancelled RFQ was in fact a Request for *Re-Quote*.

When a *Print Provider* receives an RFQ, the *Print Provider* MUST either:

- accept the RFQ by sending a Quotation to the *Print Buyer* or
- decline the RFQ by either sending a Refusal to the *Print Buyer* or letting the RFQ expire.

Table 13: RFQ

Subclass of: Abstract BusinessObject

Name	Data Type	Description
<i>Currency</i>	NMTOKEN	Three-digit currency definition according to [ISO4217]. The value of <i>Currency</i> identifies the currency that the <i>Print Provider</i> SHOULD use in the responding Quotation.
<i>Estimate?</i>	boolean	If " <i>false</i> ", the prices in the responding Quotation MUST be binding amounts. If " <i>true</i> " the <i>Print Buyer</i> MUST treat the prices in the responding Quotation as an estimate. If not specified, the <i>Print Provider</i> MUST choose whether the responding Quotation is a binding amount or an estimate.
<i>Expires</i>	dateTime	Date/time when this RFQ becomes <i>Invalid</i> .
<i>ReorderID?</i>	NMTOKENS	White-space-separated <i>BusinessID</i> values that refer to PurchaseOrder <i>PrintTalk Documents</i> that are the basis for this

Name	Data Type	Description
		(collected) RFQ. The RFQ is intended to lead to a re-order.
<i>ReplaceID?</i>	NMTOKEN	RFQ/@BusinessID of the RFQ that this <i>PrintTalk Document</i> <i>Supersedes</i> . <i>Superseding</i> is only allowed as long as the RFQ to be <i>Superseded</i> is <i>Pending</i> .
jdf: JDF	element	Description of the Product or service that is to be produced or delivered. Note that a Product description is typically used in a <i>Print Buyer</i> to <i>Print Provider</i> environment, whereas a Gray Box or individual Process is typically used in a subcontracting environment. See [JDF1.3].

3.7.2 Quotation

[New in PrintTalk 1.3.](#)

Usually a *Print Provider* creates a Quotation after receiving an RFQ. Sometimes, a *Print Provider* creates a Quotation as the first *Business Object* in the *Negotiation Phase*.

If the *Print Provider* chooses to accept an RFQ, the *Print Provider* creates one or more Quote Elements and sends them back to the *Print Buyer* in a Quotation Element. Each Quote Element represents one quote for the Job.

Table 14: Quotation

Subclass of: Abstract BusinessObject

Name	Data Type	Description
<i>Currency</i>	NMTOKEN	Three-digit currency definition according to [ISO4217]. Identifies the currency that each Quote[not(exists(@Currency))] Element inside this Quotation uses.
<i>Estimate</i>	boolean	For each Quote[not(exists(@Estimate))] Element inside this Quotation, the price MUST be a binding amount if @Estimate="false", otherwise, the <i>Print Buyer</i> MUST treat the price as an estimate only.
<i>Expires</i>	dateTime	Date/time when this Quotation becomes <i>Invalid</i> .
<i>ReorderID?</i>	NMTOKENS	White-space-separated unique <i>BusinessID</i> values that refer to PurchaseOrder <i>PrintTalk Documents</i> that are the basis for this Quotation. In this scenario the Quotation MAY be the starting point of the <i>Negotiation Phase</i> .
<i>ReplaceID?</i>	NMTOKEN	Quotation/@BusinessID of the Quotation that this Quotation <i>Supersedes</i> .
Quote +	element	Each Quote Element MUST describe a complete distinct <i>Print Product</i> variation. A Quote MUST NOT be a quote for an individual part of the Job. See Table 15: Quote.

3.7.2.1 Quote

[Modified in PrintTalk 1.3.](#)

A Quote Element describes a quote for a particular variation of a Product.

Starting with PrintTalk 1.3, the Quote Element changes from a *Business Object* to a child Element of a Quotation *Business Object*.

Table 15: Quote

Referenced by: Quotation

Subclass of: Abstract pt

Name	Data Type	Description
<i>Currency?</i>	NMTOKEN	Three-digit currency definition according to [ISO4217]. Identifies the currency that this Quote uses. If not specified, the ../@Currency (in parent) MUST be used.
<i>Estimate?</i>	boolean	If " <i>false</i> ", each price in this Quote MUST be a binding amount; otherwise, the <i>Print Buyer</i> MUST treat each price as an estimate only. If not specified, the ../@Estimate (in parent) MUST be used.
<i>Expires?</i> Deprecated in PrintTalk 1.3	dateTime	Date/time when this Quote becomes <i>Invalid</i> . This Attribute MUST NOT be specified in Quotation/Quote. Deprecation note: starting with PrintTalk 1.3, a Quote is only in the context of Quotation/Quote and thus this Attribute MUST NOT be used.
<i>QuoteID</i> New in PrintTalk 1.3	NMTOKEN	The unique identifier for this Quote Element. <i>QuoteID</i> MUST be unique only in the context of a Quotation.
<i>ReorderID?</i> Deprecated in PrintTalk 1.3	NMTOKENS	White-space-separated unique <i>BusinessID</i> values that refer to PurchaseOrder <i>PrintTalk Documents</i> that are the basis for this (collected) Quote. In this scenario the Quote is the starting point of the <i>Negotiation Phase</i> and is intended to lead to a re-order. If not specified, the ../@ReorderID (in the parent Quotation) is used. Deprecation note: starting with PrintTalk 1.3, use ../@ReorderID (in Quotation parent).
<i>ReplaceID?</i> Modified in PrintTalk 1.3	NMTOKEN	Quote/@QuoteID of the Quote that this Quote <i>Supersedes</i> . <i>Superseding</i> is only allowed as long as the Quote to be <i>Superseded</i> is <i>Pending</i> . Modification note: before PrintTalk 1.3, <i>ReplaceID</i> specifies Quote/@BusinessID of the Quote (if any) that this Quote <i>Supersedes</i> .
<i>ReturnJDF?</i>	boolean	If <i>ReturnJDF</i> = " <i>true</i> ", the <i>Print Provider</i> MUST send to the <i>Print Buyer</i> a ReturnJob <i>Business Object</i> that has a completed

Name	Data Type	Description
		JDF including Audit Elements; otherwise the <i>Print Provider</i> MUST NOT send a ReturnJob.
jdf: JDF	element	JDF representing the returned values that this Quotation has been made for. Potentially this MAY differ significantly from the original RFO. See [JDF1.3].
Pricing New in PrintTalk 1.3	element	The price associated with this Quote. Pricing MUST be used to indicate the price. See Table 16: Pricing.

3.7.2.2 Pricing

[New in PrintTalk 1.3.](#)

The Pricing Element MUST contain a list of prices for all *Items* that are included in a Quote, The Pricing Element MAY also have credit card information and terms of payment.

Table 16: Pricing

Referenced by: Quote, PurchaseOrder, Invoice

Subclass of: Abstract pt

Name	Data Type	Description
Payment ?	element	Payment details. See Table 19: Payment.
Price +	element	Each Price Element represents the price for a single <i>Item</i> . The sum of prices from all child Price Elements MUST be treated as the total price for a Quote Element. See Table 17: Price.

3.7.2.3 Price

[New in PrintTalk 1.3.](#)

The Price Element specifies the price of a single *Item*.

Table 17: Price

Referenced by: Pricing

Subclass of: Abstract pt

Name	Data Type	Description
<i>Amount</i> ?	double	Amount of items that this Price refers to. If not specified and <i>UnitPrice</i> is specified, the <i>Amount</i> will be determined upon

Name	Data Type	Description
		completion. If <i>UnitPrice</i> is specified, <i>Amount</i> MUST be specified in an Invoice.
<i>DescriptiveName</i>	string	The description of the <i>Item</i> . Note that <i>DescriptiveName</i> is required in Price, unlike <i>DescriptiveName</i> in the Abstract pt Element, where it is optional.
<i>ItemRefs</i> ? Deprecated in PrintTalk 1.3	NMTOKENS	List of jdf:JDF/@ProductID of <i>Items</i> within the associated jdf:JDF of this Quote that this Price relates to. Deprecation note: starting with PrintTalk 1.3, use <i>LineID</i> .
<i>LineID</i> ?	ID	The unique identifier for this (line) <i>Item</i> . This Price Element is referenced by any Element in the Quote/jdf:JDF whose GeneralID[@IDUsage = "LineID"]/@IDValue equals the value of this <i>LineID</i> .
<i>LineIDRefs</i> ?	NMTOKENS	Line items that this line item relates to, for instance taxes or rebates. If <i>Unit</i> = "Percent", the total value MUST be calculated from all line items referenced by <i>LineIDRefs</i> .
<i>Price</i> ?	double	The price of the entire amount as specified by <i>Amount</i> of the <i>Item</i> . <i>Price</i> MUST be specified in an Invoice. If neither <i>Price</i> nor <i>UnitPrice</i> is specified, the price is unknown at Quotation time and will be specified in the invoice, e.g., taxes or discounts. No-charge items, e.g., line items that are included within other line items, must have a price of 0.
<i>Unit</i> ?	string	MAY be specified if exists(@UnitPrice), otherwise MUST NOT be specified. The unit of measurement for <i>Amount</i> and <i>UnitPrice</i> .
<i>UnitPrice</i> ?	double	Price for one unit of the <i>Item</i> , i.e. the <i>Price</i> of the <i>Item</i> if @Amount="1". If <i>Unit</i> = "Percent", then <i>UnitPrice</i> specifies the percentage of the total cost that this line item represents.
Additional *	element	Price for orders in excess of the nominal delivery quantity specified in @Amount. See Table 18: Additional.

3.7.2.4 Additional

[New in PrintTalk 1.3.](#)

Table 18: Additional
Referenced by: Price
Subclass of: Abstract pt

Name	Data Type	Description
<i>Amount</i>	double	The additional number of <i>Items</i> that @Price refers to. The unit of measurement MUST be the ../@Unit.
<i>Price</i>	double	The price of the additional number of <i>Items</i> as specified in @Amount.

3.7.2.5 Payment

[New in PrintTalk 1.3.](#)

Table 19: Payment
Referenced by: Pricing
Subclass of: Abstract pt

Name	Data Type	Description
PayTerm ?	telem	Describes the payment terms and conditions in a human readable form.
CreditCard ?	element	Specifies credit card information. A <i>Print Buyer</i> MAY supply CreditCard. A <i>Print Provider</i> MUST NOT supply CreditCard. See Table 21: CreditCard.
jdf:GeneralID *	element	Additional details about payment MAY be specified using GeneralID Elements. See Table 20: jdf:GeneralID – Payment.

3.7.2.6 jdf:GeneralID – Payment

This section specifies particular Payment values for **jdf:GeneralID**.

Table 20: jdf:GeneralID – Payment
Referenced by: Payment

Name	Data Type	Description
<i>IDUsage</i>	NMTOKEN	Values include:
<i>BankAccount</i>		The bank account number.
<i>Bank</i>		The name of the bank.

Name	Data Type	Description
<i>BIC</i>		The SWIFT Bank Identifier Code. See [ISO9362].
<i>BLZ</i>		The "Bankleitzahl".
<i>IBAN</i>		The International Bank Account Number.
<i>IDValue</i>	string	See [JDF1.3].

3.7.2.7 CreditCard

[New in PrintTalk 1.3.](#)

Table 21: CreditCard
Referenced by: Payment
Subclass of: Abstract pt

Name	Data Type	Description
<i>Authorization ?</i>	string	Authorization code for this <i>Business Transaction</i> .
<i>AuthorizationExpires ?</i>	gYearMonth	Expiration date of the <i>Authorization</i> .
<i>Expires</i>	gYearMonth	Expiration date of the credit card.
<i>Number</i>	NMTOKEN	Credit card number. The format is specified without blanks or any other separator characters.
<i>Type</i>	NMTOKEN	Credit card brand. Values include:
<i>Amex</i>		
<i>DinersClub</i>		
<i>Discover</i>		
<i>MasterCard</i>		This includes derived brands, (e.g., EuroCard).
<i>Visa</i>		

3.7.3 PurchaseOrder

The *Print Buyer* accepts a Quote of the Quotation for purchase of *Print Product* by creating and sending a PurchaseOrder that references the Quote. However, a PurchaseOrder can also be the first *Business Object* in a *Negotiation Phase*, especially for a reorder of a previously produced *Print Product*.

Table 22: PurchaseOrder
Subclass of: Abstract BusinessObject

Name	Data Type	Description
Currency	NMTOKEN	Three-digit currency definition according to [ISO4217]. Identifies the currency that this PurchaseOrder uses.
Expires ?	dateTime	Date/time when this PurchaseOrder becomes <i>Invalid</i> .
QuoteID ? New in PrintTalk 1.3	NMTOKEN	This PurchaseOrder <i>PO</i> selects the quote specified by Quotation[@BusinessID=Q]/Quote[@QuoteID=q], where $Q = PO/@BusinessRefID$ and $q = PO/@QuoteID$.
ReorderID ?	NMTOKENS	White-space-separated unique <i>BusinessID</i> values that refer to PurchaseOrder <i>PrintTalk Documents</i> that are the basis for this (collected) re-order, if the re-order is the starting point.
ReplaceID ?	NMTOKEN	PurchaseOrder/@BusinessID of the PurchaseOrder that this PurchaseOrder <i>Supersedes</i> . <i>Superseding</i> is only allowed as long as the PurchaseOrder to be <i>Superseded</i> is <i>Pending</i> .
ReturnJDF ?	boolean	If <i>ReturnJDF</i> = " <i>true</i> " the <i>Print Provider</i> MUST send to the <i>Print Buyer</i> a ReturnJob <i>Business Object</i> that has a completed JDF including Audit Elements; otherwise, the <i>Print Provider</i> MUST NOT send a ReturnJob.
jdf: JDF	element	Description of the <i>Print Product</i> . The JDF Element MAY be used to specify a very detailed <i>Print Product</i> , or it MAY also be used to describe the ordering of finished goods in catalog-based environments. See [JDF1.3].
Pricing ? New in PrintTalk 1.3	element	Starting with Printtalk 1.3, the pricing information is in PrintTalk rather than JDF. Pricing MUST NOT be specified if @BusinessRefID references a Quotation. Pricing MAY be specified if the PurchaseOrder is based on a global contract referenced by <i>ReorderID</i> . See Table 16: Pricing.

3.7.4 Confirmation

If a *Print Provider* accepts a PurchaseOrder, it MUST send a Confirmation whose *BusinessRefID* references the accepted PurchaseOrder.

Table 23: Confirmation
Subclass of: Abstract BusinessObject

Name	Data Type	Description
jdf:Contact *	element	Detailed contact information about the company.

Name	Data Type	Description
Deprecated in PrintTalk 1.3		Deprecation note: starting with PrintTalk 1.3, the [cXML] PrintTalk/Header specifies all necessary credentials. See [JDF1.3].

3.7.5 Cancellation

A *Print Buyer* or a *Print Provider* sends a Cancellation to cancel a previously sent *Business Object*.

For a *Print Provider* to cancel for a Quotation or Confirmation, it MUST send a Cancellation whose *BusinessRefID* references the Quotation or Confirmation.

For a *Print Buyer* to cancel for an RFQ or PurchaseOrder, it MUST send to *Print Provider* a Cancellation whose *BusinessRefID* references the RFQ or PurchaseOrder.

Table 24: Cancellation

Subclass of: Abstract BusinessObject

Name	Data Type	Description
jdf:Contact * Deprecated in PrintTalk 1.3	element	Detailed contact information about the company. Deprecation note: starting with PrintTalk 1.3, the [cXML] PrintTalk/Header specifies all necessary credentials. See [JDF1.3].

3.7.6 Refusal

A *Print Buyer* or a *Print Provider* sends a Refusal to decline receipt of a *Business Object*.

If a *Print Buyer* chooses to decline a Quotation sent by a *Print Provider*, or if a *Print Provider* chooses to decline either an RFQ or a PurchaseOrder sent by a *Print Buyer*, it MUST either send a Refusal whose *BusinessRefID* references the declined *Business Object* or let the *Business Object* expire.

Table 25: Refusal

Subclass of: Abstract BusinessObject

Name	Data Type	Description
jdf:Contact * Deprecated in PrintTalk 1.3	element	Detailed contact information about the company. Deprecation note: starting with PrintTalk 1.3, the [cXML] PrintTalk/Header specifies all necessary credentials. See [JDF1.3].

3.7.7 OrderStatusRequest

An OrderStatusRequest allows the *Print Buyer* to query the *Print Provider* for details of the order status.

If a *Print Buyer* wants the status of an order, it MUST send to the *Print Provider* an OrderStatusRequest whose *BusinessRefID* references the order's PurchaseOrder. The order's PurchaseOrder is either the initial PurchaseOrder if no *Change Orders* have occurred or the latest accepted PurchaseOrder if a *Change Order* has been made.

In addition, the *Print Buyer* MUST specify whether it wants status of the:

- **entire order** (PurchaseOrder/jdf: JDF) or
- **just a portion of the order** (PurchaseOrder//jdf: JDF[@JobID = J and @JobPartID = P] for some *J* and some *P* defined in StatusRequest; the test for either *J* or *P* MAY be omitted).

Table 26: OrderStatusRequest

Subclass of: Abstract BusinessObject

Name	Data Type	Description
jdf:Contact * Deprecated in PrintTalk 1.3	element	Detailed information about the company. Deprecation note: starting with PrintTalk 1.3, all necessary credentials are defined in the [cXML] PrintTalk/Header. See [JDF1.3].
StatusRequest *	element	Individual status request description. If StatusRequest is not specified, the <i>Print Provider</i> MUST provide status for the entire order (as explained just above this table). See Table 27: StatusRequest.

3.7.7.1 StatusRequest

Table 27: StatusRequest

Referenced by: OrderStatusRequest

Subclass of: Abstract pt

Name	Data Type	Description
<i>JobIDRef?</i>	string	Reference to a <i>JobID</i> within the JDF Node in the corresponding PurchaseOrder.
<i>JobPartIDRef?</i>	string	Reference to a <i>JobPartID</i> within the JDF Node in the corresponding PurchaseOrder.
<i>ResponseDetails?</i> New in PrintTalk 1.3	enumeration	The level of detail requested in the OrderStatusResponse. Values are:
<i>Brief</i>		Include only the latest Milestone Notification of the current Job Status.

Name	Data Type	Description
<i>CompletedMilestones</i>		Include all completed Milestone Notification Elements of the current Job and the Milestone Notification Elements of steps that have begun processing.
<i>Full</i>		Include all Milestone Notification Elements as defined by <i>CompletedMilestones</i> and any additional detailed information. Starting with PrintTalk 1.3, the only defined details are jdf:DeliveryParams .

3.7.8 OrderStatusResponse

An OrderStatusResponse is the response to an OrderStatusRequest.

If a *Print Provider* receives an OrderStatusRequest, it MUST send to the *Print Buyer* an OrderStatusResponse whose *BusinessRefID* references the OrderStatusRequest.

A *Print Provider* MAY send to a *Print Buyer* an automatically generated OrderStatusResponse which describes the status of an order whose associated PurchaseOrder is referenced by the *BusinessRefID*.

Table 28: OrderStatusResponse
Subclass of: Abstract BusinessObject

Name	Data Type	Description
jdf:Contact * Deprecated in PrintTalk 1.3	element	Detailed information about the company. Deprecation note: starting with PrintTalk 1.3, the [cXML] PrintTalk/Header specifies all necessary credentials. See [JDF1.3].
jdf:DeliveryParams ?	element	Has details of the delivery status. jdf:DeliveryParams MUST NOT be partitioned when specified in an OrderStatusResponse. Individual line <i>Items</i> that are described by a PrintTalk//Pricing/Price Element MAY be referenced by jdf: DeliveryParams/Drop/DropItem/GeneralID[@IDUsage="LineID"]. See [JDF1.3].
jdf: Notification *	element	Notification Elements with @Type="Milestone" that describe the current status of the Job. jdf: Notification/@JobID and jdf: Notification/@JobPartID MAY be specified in jdf: Notification Elements that reside in an OrderStatusResponse. See [JDF1.3].
Status * Deprecated in PrintTalk 1.3	telem	Human-readable text for individual status description. Deprecation note: starting with PrintTalk 1.3, use jdf: Notification.

Name	Data Type	Description
		See Table 29: Status.

3.7.8.1 Status

[Deprecated in PrintTalk 1.3.](#)

Table 29: Status

Referenced by: OrderStatusResponse

Subclass of: Abstract pt

Name	Data Type	Description
<i>JobIDRef</i>	string	Reference to the requested part of the Job. May be a reference to the <i>JobID</i> of the JDF Root Node or to the <i>JobPartID</i> of a nested JDF Node.
<content of Element>	text	Body of the status description.

3.7.9 ProofApprovalRequest

A ProofApprovalRequest allows the *Print Provider* (in the context of an order) to request an Approval of a Proof from the *Print Buyer*.

If a *Print Provider* wants a *Print Buyer* to approve a soft or hard copy order, the *Print Provider* MUST send to the *Print Buyer* a ProofApprovalRequest whose *BusinessRefID* references the order's PurchaseOrder. The order's PurchaseOrder is either the initial PurchaseOrder if no *Change Orders* have occurred, or the latest accepted PurchaseOrder if a *Change Order* has been made.

Table 30: ProofApprovalRequest

Subclass of: Abstract BusinessObject

Name	Data Type	Description
jdf:Contact * Deprecated in PrintTalk 1.3	element	Detailed information about the company. Deprecation note: starting with PrintTalk 1.3, the [cXML] PrintTalk/Header specifies all necessary credentials. See [JDF1.3].
ProofRequest *	element	Individual proof request description. See Table 31: ProofRequest.

3.7.9.1 ProofRequest

Table 31: ProofRequest
Referenced by: ProofApprovalRequest
Subclass of: Abstract pt

Name	Data Type	Description
<i>JobIDRef?</i> Deprecated in PrintTalk 1.3	string	Reference to the <i>JobID</i> this proof corresponds to. If not specified, the ProofRequest refers to the Job that was ordered by the PurchaseOrder that is referenced by @BusinessRefID. Deprecation note: starting with PrintTalk 1.3, use jdf:ProofItem/@ProofTarget.
<i>JobPartIDRef?</i> Deprecated in PrintTalk 1.3	string	Reference to the <i>JobPartID</i> this proof corresponds to. Deprecation note: starting with PrintTalk 1.3, use jdf:ProofItem/@ProofTarget.
<i>ProofLocation?</i> Deprecated in PrintTalk 1.3	URL	Identifies a remote target for the proof output. This can be either a soft or hard proofing target. Deprecation note: starting with PrintTalk 1.3, use ProofItem/@ProofTarget.
jdf:ProofItem New in PrintTalk 1.3	element	Details of the items to be proofed. jdf:ProofItem/@ProofName and ProofItem/@ProofTarget MUST be used to reference the proof that is requested. See [JDF1.3].

3.7.10 ProofApprovalResponse

An ProofApprovalResponse is the response to an ProofApprovalRequest.

If a *Print Buyer* receives an ProofApprovalRequest, it MUST send to the *Print Provider* a ProofApprovalResponse whose *BusinessRefID* references the ProofApprovalRequest and contains the *Print Buyer's* approval or rejection of a proof.

Table 32: ProofApprovalResponse
Subclass of: Abstract BusinessObject

Name	Data Type	Description
jdf:Contact * Deprecated in PrintTalk 1.3	element	Detailed information about the company. The details of the individuals that signed off the proof are specified in jdf:ApprovalSuccess/ApprovalDetails/Contact. Deprecation note: starting with PrintTalk 1.3, the [cXML] PrintTalk/Header specifies all necessary credentials.

Name	Data Type	Description
		See [JDF1.3].
ProofResponse *	element	Human-readable text for individual proof response. See Table 33: ProofResponse.

3.7.10.1 ProofResponse

Table 33: ProofResponse
Referenced by: ProofApprovalResponse
Subclass of: Abstract pt

Name	Data Type	Description
<i>JobIDRef</i> Deprecated in PrintTalk 1.3	string	Reference to the <i>JobID</i> this proof corresponds to.
<i>JobPartIDRef</i> Deprecated in PrintTalk 1.3	string	Reference to the <i>JobPartID</i> this proof corresponds to.
<i>PageIndex?</i>	IntegerRangeList	List of Pages in the jdf:PageList that this ProofResponse applies to. If not specified, this ProofResponse applies to all Pages requested in the ProofApprovalRequest.
<i>Response</i> Deprecated in PrintTalk 1.3	enumeration	Describes the overall result of the approval. Deprecation note: starting with PrintTalk 1.3, use jdf:ApprovalSuccess to specify approval results. Values are:
<i>Approved</i>		Everything is fine.
<i>ApprovedWithEdits</i>		Minor changes required, but it's OK.
<i>Rejected</i>		Major changes. New proof required.
<content of Element> Deprecated in PrintTalk 1.3	text	Body of the response description. Deprecation note: starting with PrintTalk 1.3, use jdf:Comment to specify human readable comments.
jdf:ApprovalSuccess New in PrintTalk 1.3	element	Describes the overall result of the approval. See [JDF1.3].
jdf:ProofItem New in PrintTalk 1.3	element	Details of the items to be proofed. jdf:ProofItem/@ProofName and ProofItem/@ProofTarget MUST be used to reference the proof that is requested. See [JDF1.3].

3.7.11 Invoice

The *Print Provider* typically sends an Invoice to the *Print Buyer* after the Job is shipped. It may also send an Invoice several times, when certain milestones during the *Production Phase* are reached or after a Job is cancelled. An Invoice MAY include additional charges or discounts.

To request payment, the *Print Provider* MUST send an Invoice whose *BusinessRefID* references either the:

- PurchaseOrder for a completed Job or for milestones during the *Production Phase* or
- Cancellation for a cancelled Job.

Table 34: Invoice

Subclass of: Abstract BusinessObject

Name	Data Type	Description
<i>Currency</i>	NMTOKEN	Three-digit currency definition according to [ISO4217]. Identifies the currency that this Invoice uses.
<i>Expires</i>	dateTime	Date/time when this Invoice becomes <i>Invalid</i> . This date is the due date after which a subsequent Invoice MAY contain late payment fees.
jdf: JDF Deprecated in PrintTalk 1.3	element	Description of the <i>Print Product</i> or service. Deprecation note: starting with PrintTalk 1.3, use ReturnJob/jdf: JDF. See [JDF1.3].
Pricing New in PrintTalk 1.3	element	The price of the Products or services described by this Invoice. Note that in JDF 1.3 the pricing information has been moved from JDF to PrintTalk. See Table 16: Pricing.

3.7.12 ReturnJob

The *Print Provider* MAY send to the *Print Buyer* a ReturnJob whose *BusinessRefID* references the order's PurchaseOrder. The ReturnJob/jdf: JDF MAY contain all the production information for the Job.

Table 35: ReturnJob

Subclass of: Abstract BusinessObject

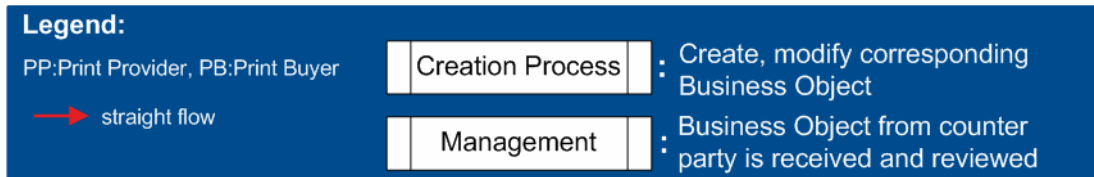
Name	Data Type	Description
jdf: JDF	element	The JDF Node after processing including the Audit Information. This is the PrintTalk equivalent to the JMF ReturnQueueEntry Message. See [JDF1.3].

4 PrintTalk Workflow Diagrams

4.1 Complete Workflow for PrintTalk

Figure 2 below shows the Legend for the other Figures in this section.

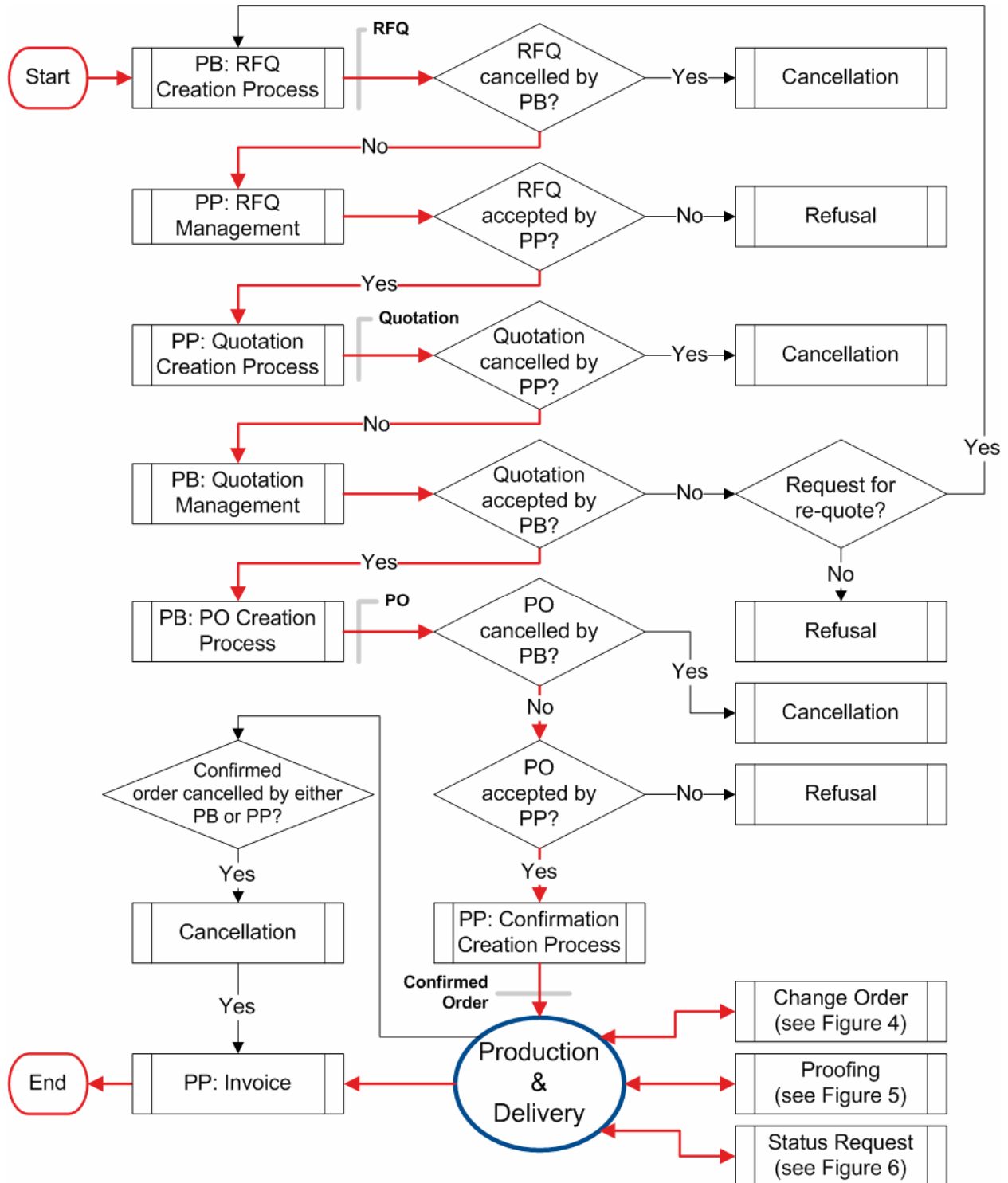
Figure 2: Legend



4.2 Complete Workflow for PrintTalk

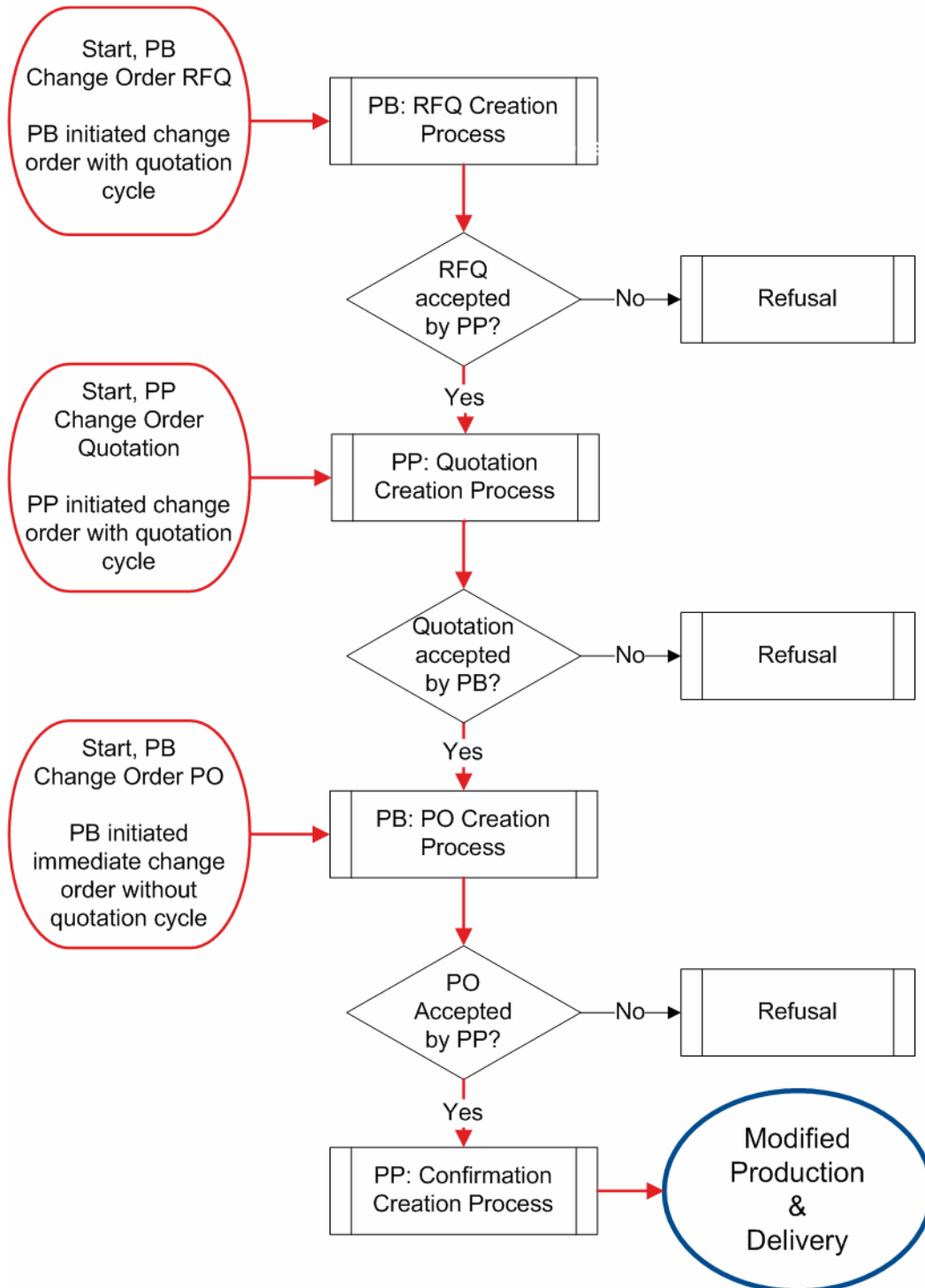
Figure 3 below shows the possible workflows using PrintTalk *Business Objects*. The diagram covers both the *Negotiation Phase* and the *Production Phase*, along with all possible loops that might occur.

Figure 3: Complete Workflow for PrintTalk



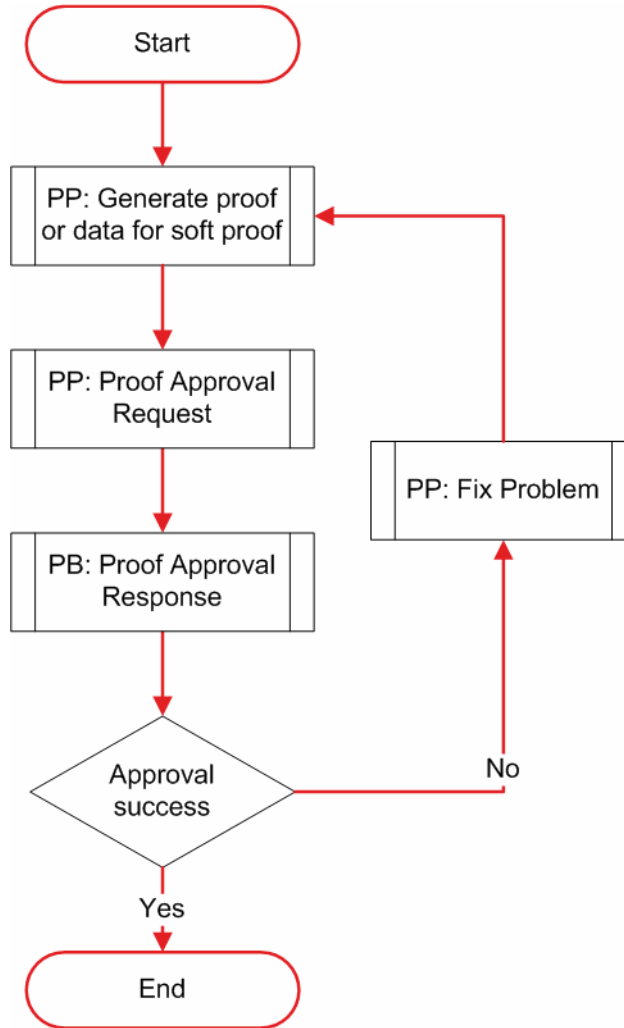
4.3 Workflow for a Change Order

Figure 4: Workflow for a Change Order



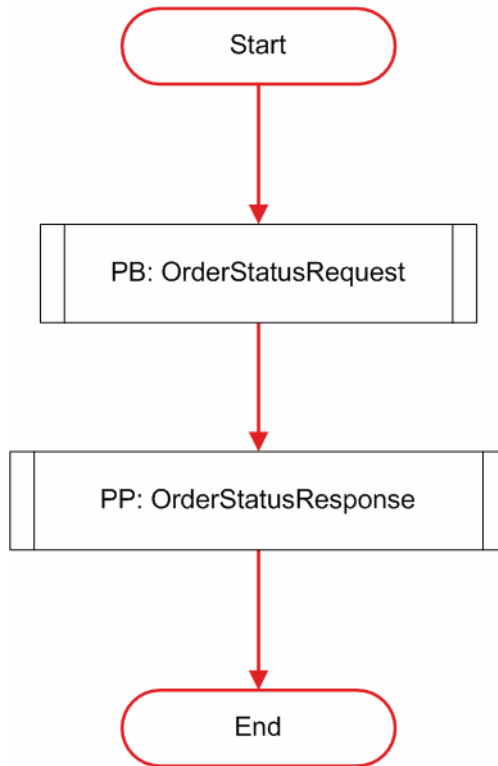
4.4 Workflow for Proofing

Figure 5: Workflow for a Proofing



4.5 Workflow for Status Request

Figure 6: Workflow for a Status Request



5 Usage of the PrintTalk IDs

This section illustrates the semantics and usage of the various IDs in typical workflow scenarios:

5.1 BusinessID and BusinessRefID:

This section illustrates the use of the *BusinessID* and *BusinessRefID*. The *BusinessRefID* references a *Business Object* that originates from the other side of the Workflow. Thus, a *Business Object* that originates from the *Print Buyer* references a *Business Object* that originates from the *Print Provider* and vice versa.

5.1.1 Simple Negotiation

1. *Print Buyer* sends RFQ
`<RFQ BusinessID="RFQ_1">`
2. *Print Provider* sends Quotation referencing RFQ "RFQ_1"
`<Quotation BusinessID="Quotation_1" BusinessRefID="RFQ_1">`
`<Quote QuoteID ="Quote_1"/>`
`<Quote QuoteID ="Quote_2"/>`
`</ Quotation>`

3. *Print Buyer* sends PurchaseOrder referencing Quote "Quote_1"
<PurchaseOrder BusinessID="PO_1" BusinessRefID="Quotation_1" QuoteID="Quote_1"/>
4. *Print Provider* sends Confirmation referencing PurchaseOrder "PO_1"
<Confirmation BusinessID="Confirmation_1" BusinessRefID="PO_1"/>

5.1.2 Change Order Initiated by Print Buyer and Starting with RFQ

1. *Print Buyer* sends *Change Order* RFQ referencing earlier "Confirmation_1"
<RFQ BusinessID="CO_RFQ" BusinessRefID="Confirmation_1">
2. *Print Provider* sends *Change Order* Quotation referencing "CO_RFQ"
<Quotation BusinessID="Quotation_4" BusinessRefID="CO_RFQ">
<Quote QuoteID="Quote_1"/>
<Quote QuoteID="Quote_2"/>
</ Quotation>
3. *Print Buyer* sends *Change Order* PurchaseOrder referencing "Quote_1"
<PurchaseOrder BusinessID="PO_3" BusinessRefID="Quotation_4" QuoteID="Quote_1">
4. *Print Provider* sends *Change Order* Confirmation referencing "PO_3"
<Confirmation BusinessID="Confirmation_2" BusinessRefID="PO_3">

5.1.3 Change Order Initiated by Print Buyer and Starting with PurchaseOrder

1. *Print Buyer* sends *Change Order* PurchaseOrder referencing earlier "Confirmation_1"
<PurchaseOrder BusinessID="PO_4" BusinessRefID="Confirmation_1" QuoteID="Quote_2">
2. *Print Provider* sends *Change Order* Confirmation referencing "PO_4"
<Confirmation BusinessID="Confirmation_3" BusinessRefID="PO_4">

5.1.4 Change Order Initiated by Print Provider and Starting with Quotation

1. *Print Provider* sends *Change Order* Quotation referencing earlier "PO_1"
<Quotation BusinessID="Quotation_5" BusinessRefID="PO_1" >
<Quote QuoteID="Quote_1"/>
<Quote QuoteID="Quote_2"/>
</ Quotation>
2. *Print Buyer* sends *Change Order* PurchaseOrder referencing "Quote_2"
<PurchaseOrder BusinessID="PO_5" BusinessRefID="Quotation_5" QuoteID="Quote_2">
3. *Print Provider* sends *Change Order* Confirmation referencing "PO_5"
<Confirmation BusinessID="Confirmation_2" BusinessRefID="PO_5">

5.1.5 Complex Negotiation

1. *Print Buyer* sends RFQ
<RFQ BusinessID="RFQ_1">
2. *Print Provider* sends Quotation referencing RFQ "RFQ_1"
<Quotation BusinessID="Quotation_1" BusinessRefID="RFQ_1">
<Quote QuoteID="Quote_1"/>
<Quote QuoteID="Quote_2"/>
</ Quotation>
3. *Print Buyer* sends an RFQ for a *Re-Quote* referencing "Quotation_1".
<RFQ BusinessID="RFQ_2" BusinessRefID="Quotation_1">
4. *Print Provider* sends Quotation for *Re-Quote* referencing "RFQ_2"
<Quotation BusinessID="Quotation_2" BusinessRefID="RFQ_2" ReplaceID="Quotation_1">

```
<Quote QuoteID="Quote_1" ReplaceID="Quote_1" >
</ Quotation>
```

5. *Print Buyer* sends PurchaseOrder referencing "Quote_1".
<PurchaseOrder BusinessID="PO_6" BusinessRefID="Quotation_2" QuoteID="Quote_1">
6. *Print Provider* sends Confirmation referencing "PO_6".
<Confirmation BusinessID="Confirmation_6" BusinessRefID="PO_6">

5.2 ReplaceID

This section illustrates the *ReplaceID*. A *Print Buyer* or *Print Provider* uses *ReplaceID* to *Supersede* a previously sent *Business Object* that has not been answered yet by the counter party.

5.2.1 Print Buyer Supercedes RFQ

1. The *Print Buyer* sends an original RFQ identified by "RFQ_1"
<RFQ BusinessID="RFQ_1">
2. The *Print Buyer* send a Superseding RFQ by referencing RFQ "RFQ_1":
<RFQ BusinessID="RFQ_2" ReplaceID="RFQ_1">

5.2.2 Print Buyer Supercedes PurchaseOrder

1. The *Print Buyer* sends an original PurchaseOrder identified by "PO_1"
<PurchaseOrder BusinessID="PO_1" BusinessRefID="Quotation_1" QuoteID="Quote_1">
2. The *Print Buyer* sends a Superseding PurchaseOrder by referencing PurchaseOrder "PO_1":
<PurchaseOrder BusinessID="PO_2" BusinessRefID="Quotation_1" ReplaceID="PO_1" QuoteID="Quote_2">

5.2.3 Print Provider Supercedes Quotation

1. *Print Provider* sends Quotation identified "Quotation_1"
<Quotation BusinessID="Quotation_1" BusinessRefID="RFQ_1">
<Quote QuoteID="Quote_1"/>
<Quote QuoteID="Quote_2"/>
</ Quotation>
2. *Print Provider* sends a Superseding Quotation by referencing Quotation "Quotation_1":
<Quotation BusinessID="Quotation_2" BusinessRefID="RFQ_1" ReplaceID="Quotation_1">
<Quote QuoteID="Quote_1" >
</ Quotation>

5.3 ReorderID

This section illustrates the *ReorderID*. A *Print Buyer* or *Print Provider* uses a *ReorderID* to place orders of one or more previously sent PurchaseOrder *Business Objects* for which the *Print Provider* has also sent a Confirmation. In all three examples below "old_PO_ID_1" and "old_PO_ID_2" refer to confirmed PurchaseOrder *Business Objects*.

5.3.1 Print Buyer Reorders via an RFQ

1. *Print Buyer* sends a RFQ to start reorder process with "old_PO_ID_1" and "old_PO_ID_2"
<RFQ BusinessID="RFQ_10" ReorderID="Master_PO_ID">

5.3.2 Print Buyer Reorders via an PurchaseOrder

1. *Print Buyer* sends a PurchaseOrder to reorder "old_PO_ID_1" and "old_PO_ID_2"

<PurchaseOrder BusinessID="PO_10" ReorderID="old_PO_ID_1 old_PO_ID_2">

5.3.3 Print Provider Quotes using ReorderID

1. *Print Provider* sends a Quotation using as basis "old_PO_ID_1" and "old_PO_ID_2"
<Quotation BusinessID="Quotation_10" ReorderID="old_PO_ID_1 old_PO_ID_2">

5.4 JDF/@JobID:

The jdf:JDF/@JobID is the ID of the Job within the *Print Providers* workflow system.

5.5 JDF/@JobPartID

The jdf:JDF/@JobPartID is the ID of a part of the Job within the *Print Providers* workflow system.

5.6 JDF/ResourcePool/CustomerInfo/@CustomerOrderID

JDF/ResourcePool/CustomerInfo/@CustomerOrderID maps to the *BusinessID* of the initial PurchaseOrder.

6 Examples

This section has four examples.

6.1 Example A – “Learn to Fly” Mailer

In the first example, a *Print Provider* produces a folded mailer, which is basically a Sheet of paper that is printed, folded and delivered to two addresses.

6.1.1 Outline of JDF Structure

JDF provides us with a very flexible mechanism for specifying shipment information. This item is shipped to 2 different locations so, 2 DropIntent Elements are used. Here’s the basic outline of the delivery portion of the ResourcePool:

```

1  <Component DescriptiveName="4 Page folded flyer" ID="Item01" >
2  <Company OrganizationName="Pan-O-Ramic" ID="Company1">
3  <Company OrganizationName="Tinker Mailing" ID="Company2">
4  <DeliveryIntent>
5      <DropIntent>
6          <Required Actual="2007-07-26" ...>
7          <CompanyRef rRef="Company1">
8          <DropItemIntent> Amount=10
9              <ComponentRef> rRef="Item01">
10             </DropItemIntent>
11         </DropIntent>
12     <DropIntent>
13         <Required Actual="2007-07-26" ...>
14         <CompanyRef> rRef="Company2">
15         <DropItemIntent> Amount=7990>
16             <ComponentRef> rRef="Item01">
17                 </DropItemIntent>
18             </DropIntent>
19 </DeliveryIntent>

```

Line 1 is the description of the shipped component.

Line 2 describes the first company to ship to.

Line 3 describes the second company to ship to.

Line 4 **DeliveryIntent** start tag.

Line 5 DropIntent start tag.

Line 6 with date/time required for first shipment.

Line 7 CompanyRef pointing to the company for this shipment ("Company1").

Line 8 DropItemIntent with amount to ship.

Line 9 ComponentRef pointing to the component to ship ("Item01").

Line 10 DropItemIntent end tag.

Line 11 DropIntent end tag.

Line 12 DropIntent start tag.

Line 13 with date/time required for second shipment.

Line 14 CompanyRef pointing to the company for this shipment ("Company2").

Line 15 DropItemIntent with amount to ship.

Line 16 ComponentRef pointing to the component to ship ("Item01").

6.1.2 Text Version of RFQ

The following page contains the original text RFQ from the *Print Buyer*. Key reference points are annotated with **AA**, **BB**, **CC**, etc. in the text and cross-referenced in the PrintTalk XML.

Request for Quote:

Date: Today is 1 July 2007 **AA**.

Printer: Polkadot Litho Inc. **BB**:

ECommerce system: Ecompany Ltd. **CC**.

Buyer:

Mary Martin **DD**
1929 Peter Pan Way
Island Drive, CA 90028
213-555-1212
mmartin@pan-o-ramic.com

Description:

“Learn to Fly” seminar mailer **EE**.

Quantity: 8,000 **FF**.

11”x 17” flyer **HH**, printed black plus 1PMS **II** on coated book **JJ**. Fold to 5.5”x 8.5” **KK**, and ship to mail **LL** house (address below). Want 60 or 70# stock **MM**, but cannot exceed 1 oz. for mail purposes **NN**.

OO Customer will furnish Quark files for the 4 Pages, with cropped and scaled scans for halftones in Photoshop files.

Bleeds, solids, and reverses completed and in the files. **PP** Proof PDF file to Mary.

Files in July 23, and finished Product must be posted via 1st class mail August 1. **QQ**.

Deliver 10 samples to Mary, balance to: **LL**.

Tinker Mailing **RR**
1234 Hurry Up Ave.
Hawthorne, CA 90250
Attn: Wendy

(No underruns allowed, up to 5% overage accepted) **SS**.

Quote required by end of business 5 July 2007. **TT**.

6.1.3 PrintTalk Version of RFQ

```
<?xml version="1.0" encoding="utf-8"?>
<PrintTalk xmlns:xsi="http://www.w3.org/2001/XMLSchema-instance"
  xmlns="http://www.printtalk.org/schema_13"
  xmlns:jdf="http://www.CIP4.org/JDFSchema_1_1"
  xsi:schemaLocation="http://www.printtalk.org/schema PrintTalk_1_1.xsd"
  version="1.1" payloadID="Christian 01 Jul 2007"
  timestamp="2007-07-01T22:39-08:00" >
  <!--version: This is the PrintTalk version; borrowed from cXML. -->
  <!--payloadID: This is transport unique ID of the message; borrowed from cXML. -->
  <!--AA timestamp: PrintTalk date/time taken from ISO 8601; the preferred representation is "complete
  (full date and time)"
```

and "extended (with punctuation)" with a time zone designation; borrowed from cXML. -->

```

<Header>
  <!--Header, Request structure borrowed from cXML. -->
  <From>
    <!-- DD. -->
    <!-- The required credentials must be agreed upon by trading partners;
    here are some examples of what can be done. -->
    <Credential domain="DNS">
      <!--The originating organization identification within a public domain
      (Domain Name Service). -->
      <Identity>pan-o-ramic.com</Identity>
    </Credential>
    <Credential domain="ECompany.com">
      <!--The originating organization identification within a private domain (ECompany's
      private registry)-->
      <Identity>PeterPan</Identity>
    </Credential>
    <Credential domain="DUNS">
      <!--The originating organization identification within a public domain (Dun and Bradstreet
      registry). -->
      <Identity>93009388</Identity>
    </Credential>
  </From>
  <To>
    <!--BB The required credentials must be agreed upon by trading partners; here are some
    examples of what can be done. -->
    <Credential domain="DNS">
      <!--The originating organization identification within a public domain (Domain Name
      Service). -->
      <Identity>AnExcellentPrinter.com</Identity>
    </Credential>
    <Credential domain="ECompany.com">
      <!--The originating organization identification within a private domain (ECompany's
      private registry)-->
      <Identity>Polkadot</Identity>
    </Credential>
    <Credential domain="DUNS">
      <!--The originating organization identification within a public domain (Dun and Bradstreet
      registry). -->
      <Identity>3040392</Identity>
    </Credential>
  </To>
  <Sender>
    <!--CC The required credentials must be agreed upon by trading partners; here are some
    examples of what can be done. -->
    <!--The Sender credential authenticate the message. -->
    <Credential domain="DNS">
      <!--The originating organization identification within a public domain (Domain Name
      Service). -->
      <Identity>ECompany.com</Identity>
      <SharedSecret>password</SharedSecret>
      <!--The SharedSecret is part of the message authentication. -->
    </Credential>
    <UserAgent>Print Buyer v.54.9</UserAgent>
    <!--The UserAgent is unique to the Sender Element and identifies the software Agent that
  
```

```

        generated the message. -->
    </Sender>
</Header>
<Request>
    <!--The Request Element contains a single PrintTalk business document; borrowed from cXML. -->
    <RFQ AgentID="Lara" AgentDisplayName="Lara Garcia-Daniels"
        BusinessID="RFQ 8884" Currency="USD"
        DescriptiveName="RFQ for simple Job" Estimate="false"
        Expires="2007-07-05T17:00-08:00"
        RequestDate="2007-07-01T22:39-08:00">
        <!--A PrintTalk Request for Quote document; the content of this Element is independent of
            cXML-->
        <!--AgentID: The unique identity of the commerce system user that "pushed the button" to send
            this document. -->
        <!--AgentDisplayName: The display name of the user. -->
        <!--BusinessID: A unique identifier for this document; opaque to the receiver. -->
        <!--Currency: For RFQ, preferred currency for quotes. -->
        <!--DescriptiveName: Human-readable description. -->
        <!--Estimate: For RFQ, whether a subsequent quote should be a casual "estimate" or formal
            "quote". -->
        <!--TT Expires: Date/time when financial information becomes invalid. -->
        <!--AA RequestDate: Date/time when Business Object was sent. -->
        <jdf:Comment Attribute="Expires">
            If you send the Quote until midnight of that day, it's also OK.
        </jdf:Comment>
        <jdf:JDF DescriptiveName="Learn to fly seminar mailer" ID="root"
            JobID="HDM20002124161007"
            ProjectID="HDM_Prod20001124161007" Type="Product"
            Status="Waiting" Version="1.1"
            xmlns="http://www.CIP4.org/JDFSchema_1_1">
            <!--A single JDF Element is the only Element content of an RFQ Element. -->
            <!--Structure of a JDF Node is defined by the JDF specification. However there is a best
                practice structure as indicated in section 3.3 of this specification. Alternative JDF
                structures are permitted although not illustrated here. -->
            <!--EE DescriptiveName: Courtesy display text. -->
            <!--ID: An XML ID-->
            <!--JobID: sender's reference to a Job. -->
            <!--ProjectID: sender's reference to a project. -->
            <!--Type: For RFQ, always "Product". -->
            <!--SettingsPolicy: indicates what happens, when unsupported settings are present. -->
            <!--status: For RFQ, always "waiting". -->
            <!--Version: JDF version. -->
            <!--xmlns: XML namespace. -->
            <AuditPool>
                <!--Not required by PrintTalk, may be used at the discretion of the document
                    creator. -->
                <Created Author="Christian@heidelberg.com"
                    TimeStamp="2007-07-01T1127+0100"/>
            </AuditPool>
            <ResourceLinkPool>
                <!--In the root JDF Node only a DeliveryIntentLink for each of the independent
                    alternatives that constitute the request
                    for quote; Usage = "Input". -->
                <DeliveryIntentLink rRef="Deliv1" Usage="Input"/>
                <CustomerInfoLink rRef="Customer1" Usage="Input"/>
            </ResourceLinkPool>

```

```

<ResourcePool>
  <CustomerInfo ID="Customer1" CustomerID="cu/4563-02" >
    <ContactRef rRef="Contact1"/>
  </CustomerInfo>
  <!--In the root JDF Node any Resources required by the JDF structure rule like
  Resources referenced in the CustomerInfo, but including the required
  DeliveryIntents and from the ResourceLinkPool. -->
  <DeliveryIntent DescriptiveName="Delivery of samples to buyer, rest to mail house"
  ID="Deliv1" Class="Intent"
  Status="Available">
    <!--Status: All intent Resources are "Available". -->
    <!--Other Attribute values determined by JDF structure rules. -->
    <Overage DataType="NumberSpan" Priority="Required" Preferred="5">
      <!--SS Overage: Percentage by which actual count of delivered items may
      exceed ordered quantity. -->
    </Overage>
    <Underage DataType="NumberSpan" Priority="Required" Preferred="0">
      <!--SS Underage: Percentage by which actual count of delivered items
      may be less than ordered quantity. -->
    </Underage>
    <Method DataType="NameSpan" Priority="Required" Preferred="1stClassMail">
      <!--QQ-->
    </Method>
    <Required DataType="TimeSpan" Priority="Required"
    Preferred="2007-07-26T09:30-08:00">
      <!--QQ-->
    </Required>
    <DropIntent>
      <ContactRef rRef="Contact1"/>
      <DropItemIntent Amount="10">
        <!--Amount: Count of items to be delivered. -->
        <!--Delivery is made to the Contact(Ref) with ContactTypes including
        "Delivery" found in this Element, or its
        parent, or its parent's parent. -->
        <ComponentRef rRef="Item01"/>
      </DropItemIntent>
    </DropIntent>
    <DropIntent>
      <ContactRef rRef="Contact2"/>
      <DropItemIntent Amount="7990">
        <!--FF LL-->
        <ComponentRef rRef="Item01"/>
      </DropItemIntent>
    </DropIntent>
  </DeliveryIntent>
  <Contact ID="Contact1" Class="Parameter" Status="Available"
  ContactTypes="Customer Delivery">
    <Address Street="1929 Peter Pan Way" City="Island Drive" Region="CA"
    PostalCode="90028" Country="United States" CountryCode="US"/>
    <Person JobTitle="Print Buyer" FirstName="Mary" FamilyName="Martin">
      <ComChannel ChannelType="Phone" Locator="1 213 555 1212"/>
      <ComChannel ChannelType="Email"
      Locator="mailto:mmartin@pan-o-ramic.com"/>
    </Person>
  </Contact>

```

```

    <Company DescriptiveName="Customer: Pan-O-Ramic" ID="Company1"
      Class="Parameter" Status="Available"
      OrganizationName="Pan-O-Ramic"/>
    <!--DD-->
  </Contact>
  <Contact ID="Contact2" Class="Parameter" Status="Available"
    ContactTypes="Delivery">
    <Address Street="1234 Hurry-up Avenue" City="Hawthorne" Region="CA"
      PostalCode="90250" Country="United States" CountryCode="US"/>
    <Person FirstName="Wendy"/>
    <Company DescriptiveName="Mail fulfillment: Tinker Mailing" ID="Company2"
      Class="Parameter" Status="Available"
      OrganizationName="Tinker Mailing">
    <!--RR-->
  </Company>
  <!--LL-->
</Contact>
</ResourcePool>
<JDF DescriptiveName="folded flyer" ID="Link0005"
  JobPartID="HDM20002124161007-folded" Type="Product"
  Status="Waiting">
  <!--This Element describes the folded flyer that is made up by the the flat, printed
    article; the child JDF Element makes the flat, printed article. -->
  <ResourceLinkPool>
    <ComponentLink rRef="Item01" Usage="Output"/>
    <ComponentLink rRef="Item01flat" Usage="Input"/>
    <FoldingIntentLink rRef="Fold1" Usage="Input"/>
  </ResourceLinkPool>
  <ResourcePool>
    <Component DescriptiveName="4-page folded flyer" ID="Item01"
      Class="Quantity" Status="Unavailable"
      ComponentType="FinalProduct">
    <Comment Name="Instruction">
      NN Check that the weight of the finished piece does
      not exceed 1oz. (28.3 grams) to qualify for U.S. postage rate.
    </Comment>
  </Component>
  <FoldingIntent ID="Fold1" Class="Intent" Status="Available">
    <FoldingCatalog DataType="NameSpan" Preferred="F8-7"
      Priority="Required">
    <!--KK Preferred: "F8-7" is an item from the folding catalog in the JDF
      specification. -->
    </FoldingCatalog>
  </FoldingIntent>
  </ResourcePool>
  <JDF DescriptiveName="flat flyer" ID="Link0006"
    JobPartID="HDM20002124161007-flat" Type="Product"
    Status="Waiting">
  <!--This Element describes the flat flyer and the intents that are used to
    describe it. -->
  <ResourceLinkPool>
    <ComponentLink rRef="Item01flat" Usage="Output"/>
    <ArtDeliveryIntentLink rRef="Art1" Usage="Input"/>
    <ColorIntentLink rRef="Color1" Usage="Input"/>
    <MediaIntentLink rRef="Media1" Usage="Input"/>
    <LayoutIntentLink rRef="Size1" Usage="Input"/>

```

```

    <ProofingIntentLink rRef="Proof1" Usage="Input"/>
  </ResourceLinkPool>
</ResourcePool>
  <Component DescriptiveName="flyer" ID="Item01flat" Class="Quantity"
    Status="Unavailable"
    ComponentType="PartialProduct"/>
  <LayoutIntent ID="Size1" Class="Intent" Status="Available">
    <Dimensions DataType="XYPairSpan" Preferred="1224 792"
      Priority="Required">
      <!--HH This is the size of the flat, printed article. -->
    </Dimensions>
    <Pages DataType="IntegerSpan" Preferred="2"/>
  </LayoutIntent>
  <ArtDeliveryIntent ID="Art1" Class="Intent" Status="Available">
    <ArtDeliveryDate DataType="TimeSpan"
      Preferred="2007-07-23T17:00-08:00"/>
    <Transfer DataType="EnumerationSpan"
      Preferred="BuyerToPrinterDeliver"/>
    <ArtDelivery HasBleeds="true" PageList="0~3"
      ArtDeliveryType="DigitalMedia">
      <RunList Pages="0~3">
        <LayoutElement HasBleeds="true" ElementType="Document">
          <FileSpec Application="Quark"/>
        </LayoutElement>
      </RunList>
      <!--OO-->
    </ArtDelivery>
    <ArtDelivery HasBleeds="true" ArtDeliveryType="DigitalMedia">
      <RunList>
        <LayoutElement HasBleeds="true" ElementType="Image">
          <FileSpec Application="Photoshop"/>
          <Comment Name="Description"
            Attribute="ElementType">
            Cropped and scaled scans for halftones.
          </Comment>
        </LayoutElement>
      </RunList>
      <!--OO-->
    </ArtDelivery>
    <Comment Name="Description">Solids and reverses completed and in
      the files. <!--OO-->
    </Comment>
  </ArtDeliveryIntent>
  <ColorIntent ID="Color1" Class="Intent" Status="Available">
    <ColorStandard DataType="NameSpan" Preferred="MonoChrome"/>
    <ColorsUsed>
      <!--II This is a 2-color Job; colors must be listed since they are
        exactly those implied by ColorStandard = "MonoChrome". -->
      <!--Here "PMSxxx" is used to mean "some unspecified PMS
        color". -->
      <SeparationSpec Name="Black"/>
      <SeparationSpec Name="PMSxxx"/>
    </ColorsUsed>
  </ColorIntent>
  <MediaIntent ID="Media1" Class="Intent" Status="Available">
    <!--JJ-->

```

```

        <FrontCoatings DataType="EnumerationSpan" Preferred="Semigloss"/>
        <StockType DataType="NameSpan" Preferred="Offset"/>
        <USWeight DataType="NumberSpan" Range="60~70">
            <!--MM-->
        </USWeight>
    </MediaIntent>
    <ProofingIntent ID="Proof1" Class="Intent" Status="Available">
        <!--PP-->
        <ProofItem ProofTarget="mailto:mmartin@pan-o-ramic.com">
            <ColorType DataType="EnumerationSpan"
                Preferred="BasicColor"/>
            <ProofType DataType="EnumerationSpan" preferred="Page"/>
            <Technology DataType="NameSpan" Preferred="SoftProof">
                <Comment Name="Instruction">Send PDF file</Comment>
            </Technology>
        </ProofItem>
    </ProofingIntent>
</ResourcePool>
</JDF>
</jdf.JDF>
</RFQ>
</Request>
</PrintTalk>

```

6.2 Example B – Bible

In the second example, the *Print Provider* produces two Bibles, one with a soft cover and another with a hard case cover and dust jacket. Just to make things interesting, the text is shared by both versions of books. We are producing 5,000 soft cover versions and 7,500 hard case versions. All are shipping to the same address.

6.2.1 Outline of JDF Structure

A simple outline of the JDF for this project looks like this:

```

1 <JDF DescriptiveName="Hard and Soft Cover Book">
2   <ResourcePool>
3     <CustomerInfo>
4     <DeliveryIntent>
5   </ResourcePool>
6   <JDF DescriptiveName="Hard Cover Bound Book">
7     <ResourcePool>
8       <BindingIntent>
9       <ComponentLink DescriptiveName="Text for both">
10      </ResourcePool>
11      <JDF DescriptiveName="Hard Cover">
12        <MediaIntent>
13      </JDF>
14      <JDF DescriptiveName="Dust Jacket">
15        <MediaIntent>
16      </JDF>
17    </JDF>
18  <JDF DescriptiveName="Soft Cover Bound Book">
19    <BindingIntent>
20    <ComponentLink DescriptiveName="Text for both">
21    <JDF DescriptiveName="Soft Cover">

```



```
22      <MediaIntent>
23    </JDF>
24  </JDF>
25  <JDF DescriptiveName="Text for both">
26    <MediaIntent>
27  </JDF>
```

Line 1 is the JDF description of the project.

Line 3 represents the *Print Buyer* buying these books. It would refer to contact and address information.

Line 4 explains the delivery instructions and refers to the same contact as on line 2 as the delivery destination.

Line 6 is the JDF description of the hard cover version.

Line 8 is the specification for the bindery used to bring the case, dust jacket, and text together to produce the hard cover version of the book.

Line 9 is the link to the text being produced.

Line 11 is the JDF describing the production of the case.

Line 12 is the **MediaIntent** describing the stock used to produce the hard cover.

Line 14 is the JDF describing the production specifications of the dust jacket.

Line 15 is the **MediaIntent** describing the paper used to produce the dust jacket.

Line 18 is the JDF description of the soft cover version.

Line 19 is the specification for the bindery used to bring the soft cover and text together to produce the soft cover version of the book.

Line 20 is the link to the text being produced.

Line 21 is the JDF description of the soft cover itself.

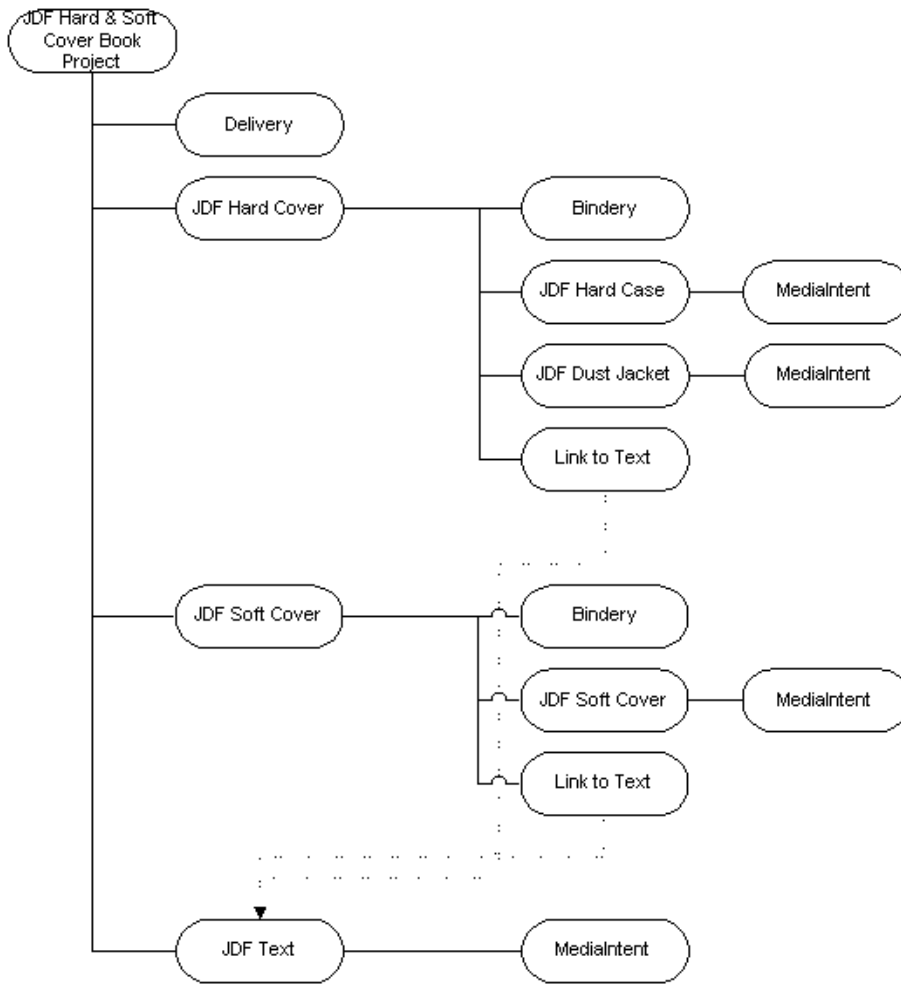
Line 22 is the **MediaIntent** describing the paper used to produce the soft cover.

Line 25 is the description of the text used by both books.

Line 26 is the **MediaIntent** describing the paper used to produce the text.

The JDF Root Node of this project combines the 2 finished Products (soft and hard cover book), with the **DeliveryIntent**. The second tier of JDF Nodes shows the individual intents to produce each book. The specification for the text could be part of the specification on each of the books separately. Because it's a shared JDF Node, it is promoted to a higher level and can be referred (and consumed) by each of the lower JDF Nodes.

Figure 7: Outline of JDF Structure for the “Bible” Example



6.2.2 PrintTalk Version of RFQ

Both the RFQ and subsequent Quotation are included in this example. The major difference between the 2 *PrintTalk Documents* is the addition of Pricing in the quote.

```

<?xml version="1.0" encoding="utf-8"?>
<PrintTalk xmlns:xsi="http://www.w3.org/2001/XMLSchema-instance"
  xmlns="http://www.printtalk.org/schema"
  xmlns:jdf="http://www.CIP4.org/JDFSchemas_1_1"
  xsi:schemaLocation="http://www.printtalk.org/schema PrintTalk_1_1.xsd" version="1.1"
  payloadID="107778"
  timestamp="2007-07-1T22:39-08:00">
  <!--version: This is the PrintTalk version; borrowed from cXML. -->
  <!--payloadID: This is transport unique ID of the message; borrowed from cXML. -->
  <Header>
    <From>
      <Credential domain="DNS">
        <Identity>www.billsfinebooks.com</Identity>
      </Credential>
    </From>
  </Header>

```

```

    <Credential domain="ECompany.com">
      <Identity>Bill's Fine Books</Identity>
    </Credential>
    <Credential domain="DUNS">
      <Identity>06-388-7745</Identity>
    </Credential>
  </From>
  <To>
    <Credential domain="ECompany.com">
      <Identity>JJ Printing</Identity>
    </Credential>
    <Credential domain="DUNS">
      <Identity>06-358-9998</Identity>
    </Credential>
  </To>
  <Sender>
    <Credential domain="DNS">
      <Identity>PrintORama.com</Identity>
      <SharedSecret>rosebud</SharedSecret>
    </Credential>
    <UserAgent>Print Buyer v.54.9</UserAgent>
  </Sender>
</Header>
<Request>
  <RFQ AgentID="Marge" AgentDisplayName="Margaret Simpson"
    RequestDate="2007-07-1T10:00-08:00"
    BusinessID="RFQ_A3317" Currency="USD" Estimate="true"
    Expires="2007-08-25T1700-0800">
    <!--Buyer requests a non-binding price. Just an estimate. -->
    <jdf:JDF DescriptiveName="224 Page hard and soft cover book" ID="JDF000-Root"
      JobID="BuyerJob001" Type="Product" Status="Waiting" Version="1.1"
      xmlns="http://www.CIP4.org/JDFSchemas_1_1">
    <!--JobID: sender's reference to a Job/project. -->
    <!--Version: JDF version. -->
    <AuditPool>
      <!--Not required by PrintTalk, may be used at the discretion of the document
        creator. -->
      <Created Author="PrintTalk" TimeStamp="2007-07-1T11:20-08:00"/>
    </AuditPool>
    <ResourcePool>
      <CustomerInfo CustomerID="pb4653/99" >
        <ContactRef rRef="Contact01"/>
      </CustomerInfo>
      <LayoutIntent ID="Size001(Finished)" Class="Intent" Status="Available">
        <Dimensions Range="576 720~648 864" DataType="XYPairSpan"
          Preferred="612 792"/>
        <Pages DataType="IntegerSpan" Preferred="224"/>
      </LayoutIntent>
      <DeliveryIntent ID="Delivery001" Class="Intent" Status="Available">
        <DropIntent>
          <!--Date by which the Product is to be delivered-->
          <Required DataType="TimeSpan" Preferred="2007-09-30T09:30-8:00"/>
          <ContactRef rRef="Contact02"/>
          <DropItemIntent Amount="7500">
            <ComponentRef rRef="Item001(HardBook)"/>
          </DropItemIntent>
        </DropIntent>
      </DeliveryIntent>
    </ResourcePool>
  </RFQ>
</Request>

```

```

        <DropItemIntent Amount="5000">
            <ComponentRef rRef="Item003(SoftBook)"/>
        </DropItemIntent>
    </DropIntent>
    <Comment>Delivery of hardcover and softcover Job</Comment>
</DeliveryIntent>
<Company ID="Company01" Class="Parameter" Status="Available"
    OrganizationName="Mega Corp"/>
<Contact ID="Contact01" Class="Parameter" Status="Available"
    ContactTypes="Customer Billing">
    <Address Street="820 N. French Street" City="Wilmington" Region="DE"
        PostalCode="19801">
        <ExtendedAddress>Attention: Accounts Payable</ExtendedAddress>
    </Address>
    <Person JobTitle="Purchasing Manager" FirstName="Lisa"
        FamilyName="Luft"/>
    <CompanyRef rRef="Company01"/>
</Contact>
<Contact ID="Contact02" Class="Parameter" Status="Available"
    ContactTypes="Delivery">
    <Address Street="555 Maple Drive" City="San Mateo" Region="CA"
        PostalCode="94403">
        <ExtendedAddress>Suite 245</ExtendedAddress>
    </Address>
    <Person JobTitle="Head of Book Division" FirstName="William"
        FamilyName="Johnson"/>
    <CompanyRef rRef="Company01"/>
</Contact>
</ResourcePool>
<ResourceLinkPool>
    <DeliveryIntentLink rRef="Delivery001" Usage="Input"/>
    <CustomerInfoLink rRef="pb4653/99" Usage="Input"/>
</ResourceLinkPool>
<JDF DescriptiveName="224 Page hard case bound book with a 4/0 dust jacket"
    ID="JDF001(HardBook)" Type="Product" Status="Waiting">
    <!--For RFQ, whatever JDF "Product" Elements necessary to specify components to be
        delivered. -->
    <ResourcePool>
        <Component ID="Item001(HardBook)" Class="Quantity" Status="Unavailable"
            DescriptiveName="224 Page hard case bound book with a 4/0 dust jacket"
            ComponentType="FinalProduct"/>
        <BindingIntent ID="Bind001(HardCover)" Class="Intent" Status="Available">
            <BindingType DataType="EnumerationSpan" Preferred="Sewn"/>
            <BindingLength DataType="EnumerationSpan" Preferred="Long"/>
        </BindingIntent>
    </ResourcePool>
    <ResourceLinkPool>
        <ComponentLink rRef="Item001(HardBook)" Usage="Output"/>
        <ComponentLink rRef="Item002(HardCase)" Usage="Input"
            ProcessUsage="Cover"/>
        <ComponentLink rRef="Item004(Text)" Usage="Input"/>
        <ComponentLink rRef="Item006(DustJacket)" Usage="Input"/>
        <BindingIntentLink rRef="Bind001(HardCover)" Usage="Input"/>
        <LayoutIntentLink rRef="Size001(Finished)" Usage="Input"/>
    </ResourceLinkPool>
</JDF DescriptiveName="DustJacket for Hard Cover" ID="JDF004(DustJacket)"

```

```

    Type="Product" Status="Waiting">
  <ResourcePool>
    <Component ID="Item006(DustJacket)" Class="Quantity"
      Status="Unavailable" DescriptiveName="Dust Jacket"
      ComponentType="PartialProduct"/>
    <ColorIntent ID="Color002(DustJacket)" Class="Intent" Status="Available">
      <Coverage DataType="NumberSpan" Preferred="50"/>
      <ColorStandard Range="CMYK" DataType="NameSpan"
        Preferred="CMYK"/>
      <InkManufacturer Range="ToyoCrayola" DataType="NameSpan"
        Preferred="ToyoCrayola"/>
    </ColorIntent>
    <MediaIntent ID="Media002(DustJacket)" Class="Intent"
      Status="Available">
      <FrontCoatings DataType="NameSpan" Preferred="None"/>
      <StockType DataType="NameSpan" Preferred="Offset"/>
    </MediaIntent>
  </ResourcePool>
  <ResourceLinkPool>
    <ComponentLink rRef="Item006(DustJacket)" Usage="Output"/>
    <LayoutIntentLink rRef="Size001(Finished)" Usage="Input"/>
    <ColorIntentLink rRef="Color002(DustJacket)" Usage="Input"/>
    <MediaIntentLink rRef="Media002(DustJacket)" Usage="Input"/>
  </ResourceLinkPool>
</JDF>
<JDF DescriptiveName="Case for Hard Cover" ID="JDF006(Case)" Type="Product"
  Status="Waiting">
  <ResourcePool>
    <Component ID="Item002(HardCase)" Class="Quantity"
      Status="Unavailable" DescriptiveName="Book Case"
      ComponentType="PartialProduct"/>
    <MediaIntent ID="Media001(Case)" Class="Intent" Status="Available">
      <MediaColor DataType="EnumerationSpan" Preferred="Black"/>
      <StockType DataType="NameSpan" Preferred="Cloth"/>
    </MediaIntent>
  </ResourcePool>
  <ResourceLinkPool>
    <ComponentLink rRef="Item002(HardCase)" Usage="Output"/>
    <LayoutIntentLink rRef="Size001(Finished)" Usage="Input"/>
    <MediaIntentLink rRef="Media001(Case)" Usage="Input"/>
  </ResourceLinkPool>
</JDF>
</JDF>
<JDF DescriptiveName="224 Page soft cover, perfect bound book"
  ID="JDF002(SoftBook)" Type="Product" Status="Waiting">
  <ResourcePool>
    <Component ID="Item003(SoftBook)" Class="Quantity" Status="Unavailable"
      DescriptiveName="soft cover, perfect bound book"
      ComponentType="FinalProduct"/>
    <BindingIntent ID="Bind002(SoftCover)" Class="Intent" Status="Available">
      <BindingType DataType="EnumerationSpan" Preferred="Adhesive"/>
    </BindingIntent>
  </ResourcePool>
  <ResourceLinkPool>
    <ComponentLink rRef="Item003(SoftBook)" Usage="Output"/>
    <ComponentLink rRef="Item005(SoftCover)" Usage="Input"/>
  </ResourceLinkPool>

```

```

    <MediaIntentLink rRef="Media003(SoftCover)" Usage="Input"/>
    <ComponentLink rRef="Item004(Text)" Usage="Input"/>
    <LayoutIntentLink rRef="Size001(Finished)" Usage="Input"/>
    <BindingIntentLink rRef="Bind002(SoftCover)" Usage="Input"/>
  </ResourceLinkPool>
  <JDF DescriptiveName="Soft Cover" ID="JDF005(SoftCover)" Type="Product"
    Status="Waiting">
    <ResourcePool>
      <Component ID="Item005(SoftCover)" Class="Quantity"
        Status="Unavailable" DescriptiveName="soft cover"
        ComponentType="PartialProduct"/>
      <MediaIntent ID="Media003(SoftCover)" Class="Intent"
        Status="Available">
        <FrontCoatings DataType="NameSpan" Preferred="None"/>
        <StockType DataType="NameSpan" Preferred="offset"/>
      </MediaIntent>
      <ColorIntent ID="Color003(SoftCover)" Class="Intent" Status="Available">
        <Coverage DataType="NumberSpan" Preferred="50"/>
        <ColorStandard Range="CMYK" DataType="NameSpan"
          Preferred="CMYK"/>
        <InkManufacturer Range="ToyoCrayola" DataType="NameSpan"
          Preferred="ToyoCrayola"/>
      </ColorIntent>
    </ResourcePool>
  </ResourceLinkPool>
  <ComponentLink rRef="Item005(SoftCover)" Usage="Output"/>
  <LayoutIntentLink rRef="Size001(Finished)" Usage="Input"/>
  <ColorIntentLink rRef="Color003(SoftCover)" Usage="Input"/>
  <MediaIntentLink rRef="Media003(SoftCover)" Usage="Input"/>
</ResourceLinkPool>
</JDF>
</JDF>
<JDF DescriptiveName="text for 224 Page book" ID="JDF003(Text)" Type="Product"
  Status="Waiting">
  <ResourcePool>
    <Component ID="Item004(Text)" Class="Quantity" Status="Unavailable"
      DescriptiveName="Reader text for hard or soft cover 224 Page book"
      ComponentType="PartialProduct"/>
    <ColorIntent ID="Color001(Text)" Class="Intent" Status="Available">
      <Coverage DataType="NumberSpan" Preferred="10"/>
      <ColorStandard DataType="NameSpan" Preferred="MonoChrome"/>
      <InkManufacturer Range="Black" DataType="NameSpan"/>
    </ColorIntent>
    <MediaIntent ID="Media001(Text)" Class="Intent" Status="Available">
      <FrontCoatings DataType="NameSpan" Preferred="None"/>
      <StockType DataType="NameSpan" Preferred="bond"/>
      <USWeight DataType="NumberSpan" Preferred="9"/>
      <Opacity DataType="EnumerationSpan" Preferred="Opaque"/>
    </MediaIntent>
  </ResourcePool>
  <ResourceLinkPool>
    <ComponentLink rRef="Item004(Text)" Usage="Output"/>
    <ColorIntentLink rRef="Color001(Text)" Usage="Input"/>
    <MediaIntentLink rRef="Media001(Text)" Usage="Input"/>
    <LayoutIntentLink rRef="Size001(Finished)" Usage="Input"/>
  </ResourceLinkPool>

```

```

        </JDF>
    </jdf:JDF>
</RFQ>
</Request>
</PrintTalk>

```

6.2.3 PrintTalk Version of Quotation

```

<?xml version="1.0" encoding="utf-8"?>
<PrintTalk xmlns:xsi="http://www.w3.org/2001/XMLSchema-instance"
  xmlns="http://www.printtalk.org/schema"
  xmlns:jdf="http://www.CIP4.org/JDFSchema_1_1"
  xsi:schemaLocation="http://www.printtalk.org/schema PrintTalk_1_1.xsd" version="1.1"
  payloadID="107778"
  timestamp="2007-07-25T22:39-08:00">
  <!--version: This is the PrintTalk version; borrowed from cXML. -->
  <!--payloadID: This is transport unique ID of the message; borrowed from cXML. -->
  <Header>
    <From>
      <Credential domain="ECompany.com">
        <Identity>JJ Printing</Identity>
      </Credential>
      <Credential domain="DUNS">
        <Identity>06-358-9998</Identity>
      </Credential>
    </From>
    <To>
      <Credential domain="DNS">
        <Identity>www.billsfinebooks.com</Identity>
      </Credential>
      <Credential domain="ECompany.com">
        <Identity>Bill's Fine Books</Identity>
      </Credential>
      <Credential domain="DUNS">
        <Identity>06-388-7745</Identity>
      </Credential>
    </To>
    <Sender>
      <Credential domain="DNS">
        <Identity>www.JJPrinting.com</Identity>
        <SharedSecret>rosebud</SharedSecret>
      </Credential>
      <UserAgent>EFD 6.0</UserAgent>
    </Sender>
  </Header>
  <Request>
    <Quotation AgentID="Carlos" AgentDisplayName="Carlos Chavez"
      RequestDate="2007-07-25T10:00-08:00"
      BusinessID="Quote744910" BusinessRefID="RFQ_A3317" Currency="USD"
      Estimate="true" Expires="2007-08-26T1700-0800">
      <!--Print Provider sends a non-binding price. Just an estimate-->
      <Quote QuoteID="Quote_1">
        <Pricing>
          <Price LineID="DI1_1" DescriptiveName="Hard Cover Books" Amount="7500"
            Unit="copies" Price="24150.00">
            <Additional Amount="1000" Price="2650.00"/>

```

```

        <jdf:Comment>Estimated price $3.22 per book. Additional price $2.65 per
        book + shipping</Comment>
    </Price>
    <Price LineID="DI1_2" DescriptiveName="Shipping" Price="1233.00">
        <jdf:Comment>Shipped UPS book rate</ Comment>
    </Price>
    <Price LineID="DI2_1" DescriptiveName="Soft Cover Book" Amount="7500"
        Unit="copies" Price="8800.00">
        <Additional Amount="1000" Price="1230.00"/>
        <jdf:Comment>Estimated price $1.76 per book. Additional price $1.23 per
        book + shipping </Comment>
    </Price>
    <Price LineID="DI2_2" DescriptiveName="Shipping" Price="783.00">
        <jdf:Comment>Shipped UPS book rate</Comment>
    </Price>
</Pricing>
<jdf:JDF DescriptiveName="224 Page hard and soft cover book" ID="JDF000-Root"
    JobID="BuyerJob001" Type="Product" Status="Waiting" Version="1.1"
    xmlns="http://www.CIP4.org/JDFSchema_1_1">
    <!--JobID: sender's reference to a Job/project. -->
    <!--Version: JDF version. -->
    <AuditPool>
        <!--Not required by PrintTalk, may be used at the discretion of the document
        creator. -->
        <Created Author="PrintTalk" TimeStamp="2007-07-1T11:20:08:00"/>
    </AuditPool>
    <ResourcePool>
        <CustomerInfo CustomerID="pb4653/99">
            <ContactRef rRef="Contact01"/>
        </CustomerInfo>
        <DeliveryIntent ID="Delivery001" Class="Intent" Status="Available">
            <DropIntent>
                <Required DataType="TimeSpan" Preferred="2007-09-30T09:30-8:00"/>
                <!--Date by which the Product is to be delivered-->
                <ContactRef rRef="Contact02"/>
                <DropItemIntent Amount="7500" >
                    <ComponentRef rRef="Item001(HardBook)"/>
                    <jdf:GeneralID IDUsage="LineID" IDValue="DI1_1"/>
                    <jdf:GeneralID IDUsage="LineID" IDValue="DI1_2"/>
                </DropItemIntent>
                <DropItemIntent Amount="5000" >
                    <ComponentRef rRef="Item003(SoftBook)"/>
                    <jdf:GeneralID IDUsage="LineID" IDValue="DI2_1"/>
                    <jdf:GeneralID IDUsage="LineID" IDValue="DI2_2"/>
                </DropItemIntent>
            </DropIntent>
            <Comment>Delivery of hardcover and softcover Job</Comment>
        </DeliveryIntent>
        <Company ID="Company01" Class="Parameter" Status="Available"
            OrganizationName="Mega Corp"/>
        <Contact ID="Contact01" Class="Parameter" Status="Available"
            ContactTypes="Customer Billing">
            <Address Street="820 N. French Street" City="Wilmington" Region="DE"
                PostalCode="19801">
                <ExtendedAddress>Attention: Accounts Payable</ExtendedAddress>
            </Address>

```



```

        <Person JobTitle="Purchasing Manager" FirstName="Lisa"
            FamilyName="Luft"/>
        <CompanyRef rRef="Company01"/>
    </Contact>
    <Contact ID="Contact02" Class="Parameter" Status="Available"
        ContactTypes="Delivery">
        <Address Street="555 Maple Drive" City="San Mateo" Region="CA"
            PostalCode="94403">
            <ExtendedAddress>Suite 245</ExtendedAddress>
        </Address>
        <Person JobTitle="Head of Book Division" FirstName="William"
            FamilyName="Johnson"/>
        <CompanyRef rRef="Company01"/>
    </Contact>
</ResourcePool>
<ResourceLinkPool>
    <DeliveryIntentLink rRef="Delivery001" Usage="Input"/>
    <CustomerInfoLink rRef="pb4653/99" Usage="Input"/>
</ResourceLinkPool>
<JDF DescriptiveName="224 Page hard case bound book with a 4/0 dust jacket"
    ID="JDF001(HardBook)" Type="Product" Status="Waiting">
    <!--For Quote, whatever JDF "Product" Elements necessary to specify components to
        be delivered. -->
    <ResourcePool>
        <Component ID="Item001(HardBook)" Class="Quantity" Status="Unavailable"
            DescriptiveName="224 Page hard case bound book with a 4/0 dust jacket"
            ComponentType="FinalProduct"/>
        <LayoutIntent ID="Size001(Finished)" Class="Intent" Status="Available">
            <Dimensions DataType="XYPairSpan" Preferred="612 792"
                Range="576 720~648 864"/>
            <Pages DataType="IntegerSpan" Preferred="224"/>
        </LayoutIntent>
        <BindingIntent ID="Bind001(HardCover)" Class="Intent" Status="Available">
            <BindingType DataType="EnumerationSpan" Preferred="HardCover"/>
            <BindingLength DataType="EnumerationSpan" Preferred="Long"/>
        </BindingIntent>
    </ResourcePool>
    <ResourceLinkPool>
        <ComponentLink rRef="Item001(HardBook)" Usage="Output"/>
        <ComponentLink rRef="Item002(HardCase)" Usage="Input"
            ProcessUsage="Cover"/>
        <ComponentLink rRef="Item004(Text)" Usage="Input"/>
        <ComponentLink rRef="Item006(DustJacket)" Usage="Input"/>
        <BindingIntentLink rRef="Bind001(HardCover)" Usage="Input"/>
        <LayoutIntentLink rRef="Size001(Finished)" Usage="Input"/>
    </ResourceLinkPool>
    <JDF DescriptiveName="DustJacket for Hard Cover" ID="JDF004(DustJacket)"
        Type="Product" Status="Waiting">
    <ResourcePool>
        <Component ID="Item006(DustJacket)" Class="Quantity"
            Status="Unavailable" DescriptiveName="Dust Jacket"
            ComponentType="PartialProduct"/>
        <ColorIntent ID="Color002(DustJacket)" Class="Intent" Status="Available">
            <Coverage DataType="NumberSpan" Preferred="50"/>
            <ColorStandard DataType="NameSpan" Preferred="CMYK"
                Priority="Required"/>
        </ColorIntent>
    </ResourcePool>

```

```

        <InkManufacturer DataType="NameSpan" Preferred="ToyoCrayola"
            Priority="Required"/>
    </ColorIntent>
    <MediaIntent ID="Media002(DustJacket)" Class="Intent"
        Status="Available">
        <FrontCoatings DataType="EnumerationSpan" Preferred="None"/>
        <StockType DataType="NameSpan" Preferred="Offset"/>
    </MediaIntent>
</ResourcePool>
<ResourceLinkPool>
    <ComponentLink rRef="Item006(DustJacket)" Usage="Output"/>
    <ColorIntentLink rRef="Color002(DustJacket)" Usage="Input"/>
    <LayoutIntentLink rRef="Size001(Finished)" Usage="Input"/>
    <MediaIntentLink rRef="Media002(DustJacket)" Usage="Input"/>
</ResourceLinkPool>
</JDF>
<JDF DescriptiveName="Case for Hard Cover" ID="JDF006(Case)" Type="Product"
    Status="Waiting">
    <ResourcePool>
        <Component ID="Item002(HardCase)" Class="Quantity"
            Status="Unavailable" DescriptiveName="Book Case"
            ComponentType="PartialProduct"/>
        <MediaIntent ID="Media001(Case)" Class="Intent" Status="Available">
            <MediaColor DataType="EnumerationSpan" Preferred="Black"/>
            <StockType DataType="NameSpan" Preferred="Cloth"/>
        </MediaIntent>
    </ResourcePool>
    <ResourceLinkPool>
        <ComponentLink rRef="Item002(HardCase)" Usage="Output"/>
        <LayoutIntentLink rRef="Size001(Finished)" Usage="Input"/>
        <MediaIntentLink rRef="Media001(Case)" Usage="Input"/>
    </ResourceLinkPool>
</JDF>
</JDF>
<JDF DescriptiveName="224 Page soft cover, perfect bound book"
    ID="JDF002(SoftBook)" Type="Product" Status="Waiting">
    <ResourcePool>
        <Component ID="Item003(SoftBook)" Class="Quantity" Status="Unavailable"
            DescriptiveName="soft cover, perfect bound book"
            ComponentType="FinalProduct"/>
        <BindingIntent ID="Bind002(SoftCover)" Class="Intent" Status="Available">
            <BindingType DataType="EnumerationSpan" Preferred="SoftCover"/>
        </BindingIntent>
    </ResourcePool>
    <ResourceLinkPool>
        <ComponentLink rRef="Item003(SoftBook)" Usage="Output"/>
        <ComponentLink rRef="Item005(SoftCover)" Usage="Input"
            ProcessUsage="Cover"/>
        <ComponentLink rRef="Item004(Text)" Usage="Input"/>
        <LayoutIntentLink rRef="Size001(Finished)" Usage="Input"/>
        <BindingIntentLink rRef="Bind002(SoftCover)" Usage="Input"/>
    </ResourceLinkPool>
<JDF DescriptiveName="Soft Cover" ID="JDF005(SoftCover)" Type="Product"
    Status="Waiting">
    <ResourcePool>
        <Component ID="Item005(SoftCover)" Class="Quantity"

```

```

        Status="Unavailable" DescriptiveName="soft cover"
        ComponentType="PartialProduct"/>
    <MediaIntent ID="Media003(SoftCover)" Class="Intent"
        Status="Available">
        <FrontCoatings DataType="EnumerationSpan" Preferred="None"/>
        <StockType DataType="NameSpan" Preferred="Offset"/>
    </MediaIntent>
    <ColorIntent ID="Color003(SoftCover)" Class="Intent" Status="Available">
        <Coverage DataType="NumberSpan" Preferred="50"/>
        <ColorStandard DataType="NameSpan" Preferred="CMYK"
            Priority="Required"/>
        <InkManufacturer DataType="NameSpan" Preferred="ToyoCrayola"
            Priority="Required"/>
    </ColorIntent>
</ResourcePool>
<ResourceLinkPool>
    <ComponentLink rRef="Item005(SoftCover)" Usage="Output"/>
    <LayoutIntentLink rRef="Size001(Finished)" Usage="Input" />
    <ColorIntentLink rRef="Color003(SoftCover)" Usage="Input"/>
    <MediaIntentLink rRef="Media003(SoftCover)" Usage="Input"/>
</ResourceLinkPool>
</JDF>
</JDF>
<JDF DescriptiveName="text for 224 Page book" ID="JDF003(Text)" Type="Product"
    Status="Waiting">
    <ResourcePool>
        <Component ID="Item004(Text)" Class="Quantity" Status="Unavailable"
            DescriptiveName="Reader text for hard or soft cover 224 Page book"
            ComponentType="PartialProduct"/>
        <ColorIntent ID="Color001(Text)" Class="Intent" Status="Available">
            <ColorStandard DataType="NameSpan" Preferred="MonoChrome"/>
            <Coverage DataType="NumberSpan" Preferred="10"/>
            <InkManufacturer Range="Black" DataType="NameSpan"/>
        </ColorIntent>
        <MediaIntent ID="Media001(Text)" Class="Intent" Status="Available">
            <FrontCoatings DataType="EnumerationSpan" Preferred="None"/>
            <Opacity DataType="EnumerationSpan" Preferred="Opaque"/>
            <StockType DataType="NameSpan" Preferred="Bond"/>
            <USWeight DataType="NumberSpan" Preferred="9"/>
        </MediaIntent>
    </ResourcePool>
    <ResourceLinkPool>
        <ComponentLink rRef="Item004(Text)" Usage="Output"/>
        <ColorIntentLink rRef="Color001(Text)" Usage="Input"/>
        <MediaIntentLink rRef="Media001(Text)" Usage="Input"/>
        <LayoutIntentLink rRef="Size001(Finished)" Usage="Input"/>
    </ResourceLinkPool>
</JDF>
</jdf.JDF>
</Quote>
</Quotation>
</Request>
</PrintTalk>

```

6.3 Example C – Sunrise PurchaseOrder

In PrintTalk, the Quotation response to an RFQ looks similar to that RFQ, usually restating many of the items in the original RFQ. In the same way, a PurchaseOrder response to a Quotation looks similar to the Quotation. Of course, in the PurchaseOrder, any options are eliminated and the pricing specifies the exact quantity and tolerance for each delivery. It is also acceptable for the PurchaseOrder to simply acknowledge the quote and respond with acceptance without restating any of the specifications.

By using JDF, PrintTalk can Support another kind of PurchaseOrder entirely. Sometimes, it's necessary to purchase an item from a printer that has a pre-established price and well-defined content. To embrace this Catalog-based part of the print market, JDF/PrintTalk allows finished goods to be ordered in a PurchaseOrder as components using the *CatalogID* and *CatalogDetails* Attributes.

The following example uses Catalog Elements as the contents of a Purchase Order.

6.3.1 Text Version of RFQ

6.3.2 PrintTalk Version of RFQ

```

<?xml version="1.0" encoding="UTF-8"?>
<PrintTalk xmlns:xsi="http://www.w3.org/2001/XMLSchema-instance"
  xmlns="http://www.printtalk.org/schema"
  xmlns:jdf="http://www.CIP4.org/JDFSchema_1_1"
  xsi:schemaLocation="http://www.printtalk.org/schema PrintTalk_1_1.xsd" version="1.1"
  payloadID="107448"
  timestamp="2007-07-10T22:39Z">
  <Header>
    <From>
      <Credential domain="DNS">
        <Identity>www.megacorp.com</Identity>
      </Credential>
      <Credential domain="ECompany.com">
        <Identity>Mega Corp</Identity>
      </Credential>
      <Credential domain="DUNS">
        <Identity>063887745</Identity>
      </Credential>
    </From>
    <To>
      <Credential domain="ECompany.com">
        <Identity>Sunrise Printing</Identity>
      </Credential>
      <Credential domain="DUNS">
        <Identity>063589998</Identity>
      </Credential>
    </To>
    <Sender>
      <Credential domain="DNS">
        <Identity>PrintORama.com</Identity>
        <SharedSecret>firehose</SharedSecret>
      </Credential>
      <UserAgent>Print Buyer v.54.9</UserAgent>
    </Sender>
  </Header>
  <Request>
    <PurchaseOrder AgentID="Patb" AgentDisplayName="Pat Butler"
      RequestDate="2007-07-10T1000-0800"
      BusinessID="24022" Currency="USD" Expires="2007-08-10T1700-0800">
      <Pricing>
        <Price LineID="DI1_1" DescriptiveName="Total" Price="62.50"/>
        <Price LineID="DI1_2" DescriptiveName="Discount" Unit="Percent"/>
        <Price LineID="DI2_1" DescriptiveName="Total" Price="54.00"/>
        <Price LineID="DI2_2" DescriptiveName="Discount" Price="5.40"/>
        <Price LineID="DI3_1" DescriptiveName="Total" Price="760.00"/>
        <Price LineID="DI4_1" DescriptiveName="Total" Price="871.10"/>
        <Price LineID="DI4_2" DescriptiveName=" Shipping and Handling" Price="12.00" />
        <Price LineID="DI4_3" DescriptiveName="Tax " />
        <Price LineID="DI4_4" DescriptiveName="Discount" />
        <Payment>
          <PayTerm > 2% 10, Net 30</PayTerm>
        </Payment>
      </Pricing>
    </PurchaseOrder>
  </Request>

```

```

<jdf:JDF DescriptiveName="Purchase Order 24022" ID="JDF000-Root" JobID="0901-1243"
  Type="Product" Status="Waiting" Version="1.1"
  xmlns="http://www.CIP4.org/JDFSchemas_1_1">
  <ResourcePool>
    <CustomerInfo CustomerID="423163" >
      <ContactRef rRef="Contact02"/>
    </CustomerInfo>
    <Contact ID="Contact01" Class="Parameter" Status="Available"
      ContactTypes="Delivery">
      <Address Street="24 Madison Avenue" City="New York" Region="NY"
        PostalCode="10022">
        <ExtendedAddress>Suite 1</ExtendedAddress>
      </Address>
      <Person JobTitle="Sales Manager, East Coast" FirstName="Phil"
        FamilyName="Chavez"/>
      <Company ID="Company01" Class="Parameter" Status="Available"
        OrganizationName="Reylon Division"/>
    </Contact>
    <Contact ID="Contact02" Class="Parameter" Status="Available"
      ContactTypes="Billing Customer">
      <Address Street="4100 State Street" City="Little Rock" Region="AR "
        PostalCode="72201 "/>
      <Company ID="Company02" Class="Parameter" Status="Available"
        OrganizationName="Mega Corporation"/>
    </Contact>
    <DeliveryIntent ID="Delivery001" Class="Intent" Status="Available">
      <Method DataType="NameSpan" Preferred="UPS"/>
      <DropIntent>
        <Required DataType="TimeSpan" Preferred="2007-08-22T09:30-8:00"/>
        <ContactRef rRef="Contact01"/>
        <DropItemIntent Amount="1" Unit="500">
          <ComponentRef rRef="Item001"/>
          <jdf:GeneralID IDUsage="LineID" IDValue=" DI1_1"/>
          <jdf:GeneralID IDUsage="LineID" IDValue=" DI1_2"/>
        </DropItemIntent>
        <DropItemIntent Amount="1" Unit="500">
          <ComponentRef rRef="Item002"/>
          <jdf:GeneralID IDUsage="LineID" IDValue=" DI2_1"/>
          <jdf:GeneralID IDUsage="LineID" IDValue=" DI2_2"/>
        </DropItemIntent>
        <DropItemIntent Amount="250" Unit="1">
          <ComponentRef rRef="Item003"/>
          <jdf:GeneralID IDUsage="LineID" IDValue=" DI3_1"/>
        </DropItemIntent>
      </DropIntent>
      <jdf:GeneralID IDUsage="LineID" IDValue="DI4_1"/>
      <jdf:GeneralID IDUsage="LineID" IDValue="DI4_2"/>
      <jdf:GeneralID IDUsage="LineID" IDValue="DI4_3"/>
      <jdf:GeneralID IDUsage="LineID" IDValue="DI4_4"/>
    </DeliveryIntent>
    <Component ID="Item001" Class="Quantity" Status="Available"
      DescriptiveName="Business Cards - Phil Chavez"
      ComponentType="FinalProduct" CatalogID="BC-Phil Chavez"
      ProductID="Reylon-123" CatalogDetails="Business Cards - Phil Chavez"/>
    <Component ID="Item002" Class="Quantity" Status="Available"

```

```

        DescriptiveName="Notepad - Phil Chavez"
        ComponentType="FinalProduct" CatalogID="NP-Phil Chavez"
        ProductID="Reylon-124" CatalogDetails="Notepad - Phil Chavez"/>
    <Component ID="Item003" Class="Quantity" Status="Available"
        DescriptiveName="Reylon Mailer"
        ComponentType="FinalProduct" CatalogID="RM 25.5" ProductID="Reylon-125"
        CatalogDetails="Reylon Mailer"/>
    </ResourcePool>
    <ResourceLinkPool>
        <DeliveryIntentLink rRef="Delivery001" Usage="Input"/>
        <CustomerLink rRef="423163" Usage="Input"/>
    </ResourceLinkPool>
</jdf:JDF>
</PurchaseOrder>
</Request>
</PrintTalk>

```

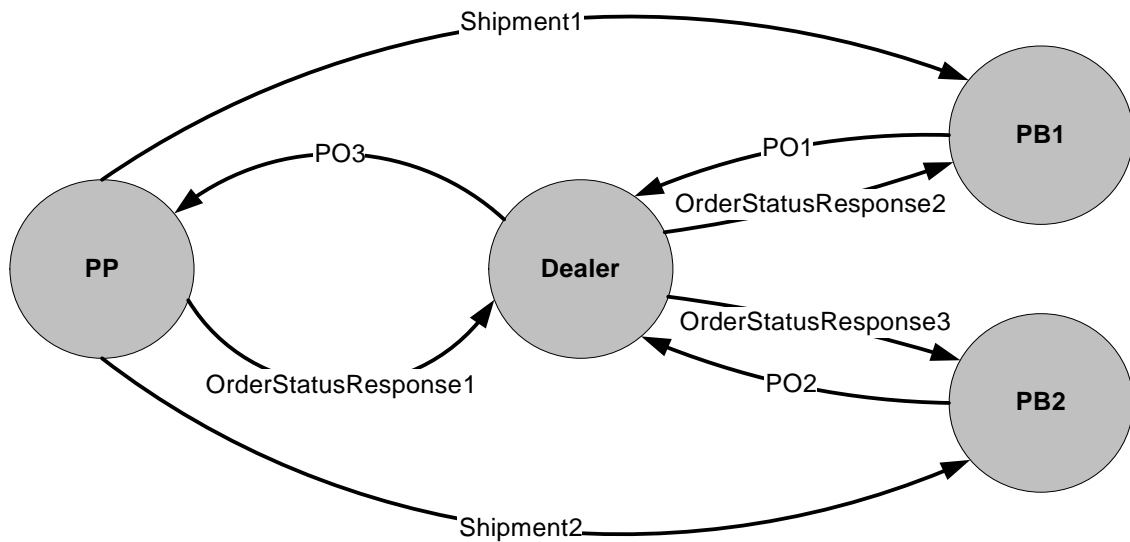
6.4 Example D – Collaboration Scenario

The fourth example illustrates a scenario that occurs among four parties involved in a print production process. A *Print Buyer PB1* and a *Print Buyer PB2* both are ordering Products via a “dealer” which in turns forwards the orders to a *Print Provider*.

In a first step, both *Print Buyers* send a *PurchaseOrder* to the dealer. The dealer then merges the two *PurchaseOrder* Elements into a new *PurchaseOrder (PO3)* and sends it to the *Print Provider*. The *Print Provider* finally sends status information back to the dealer who in turn might forward that back to his customers. The *Print Provider* sends the physical Products directly to the two *Print Buyers* and identifies them with the *Print Buyers'* purchase order numbers.

Note: the Confirmation *Business Objects* that are sent in between the *PurchaseOrder* Elements and the *OrderStatusResponse* Elements are not shown explicitly for sake of space.

Figure 8: Diagram of Business Transactions among Four Collaborating Parties



6.4.1 PrintTalk Version of PurchaseOrder for Print Buyer PB1

The PrintTalk/JDF files exchanged by the parties might look as follows (please note that the JDF part is not fully specified):

```
<?xml version="1.0" encoding="UTF-8"?>
<PrintTalk xmlns:xsi="http://www.w3.org/2001/XMLSchema-instance"
  xmlns="http://www.printtalk.org/schema" xmlns:jdf="http://www.CIP4.org/JDFSchema_1_1"
  xsi:schemaLocation="http://www.printtalk.org/schema PrintTalk_1_1.xsd" version="1.1"
  payloadID="107448" timestamp="2007-09-05T1000-0800">
  <Header>
    <From>
      <Credential domain="DNS">
        <Identity>www.fredsfinerugs.com</Identity>
      </Credential>
      <Credential domain="DUNS">
        <Identity>063333745</Identity>
      </Credential>
    </From>
    <To>
      <Credential domain="ECompany.com">
        <Identity>Print Dealer</Identity>
      </Credential>
      <Credential domain="DUNS">
        <Identity>063566668</Identity>
      </Credential>
    </To>
    <Sender>
      <Credential domain="DNS">
        <Identity>PrintORama.com</Identity>
        <SharedSecret>firehose</SharedSecret>
      </Credential>
      <UserAgent>PrintORama v.1.0</UserAgent>
    </Sender>
  </Header>
  <Request>
    <PurchaseOrder AgentID="LisaL" AgentDisplayName="Lisa Luft"
      RequestDate="2007-09-05T1000-0800"
      BusinessID="12345" Currency="USD" Expires="2007-09-10T1700-0800">
      <jdf:JDF DescriptiveName="Winter Sales Promo" ID="JDF000-Root" JobID="0901-1243"
        Type="Product" Status="Waiting" Version="1.1"
        xmlns="http://www.CIP4.org/JDFSchema_1_1">
        <ResourcePool>
          <CustomerInfo ID="Customer01" CustomerID="952425" >
            <ContactRef rRef="Contact01"/>
          </CustomerInfo>
          <Contact ID="Contact01" Class="Parameter" Status="Available"
            ContactTypes="Billing Delivery Customer">
            <Address Street="1745 First Street" City="Dublin" Region="OH"
              PostalCode="43202"/>
            <Person JobTitle="Sales Administrator" FirstName="June"
              FamilyName="Jones"/>
            <Company ID="Company01" Class="Parameter" Status="Available"
              OrganizationName="Fred's Fine Rugs"/>
          </Contact>
          <DeliveryIntent ID="Delivery001" Class="Intent" Status="Available">
            <Method DataType="NameSpan" Preferred="UPS"/>
          </DeliveryIntent>
        </ResourcePool>
      </jdf:JDF>
    </PurchaseOrder>
  </Request>
</PrintTalk>
```

```

        <DropIntent>
          <Required DataType="TimeSpan" Preferred="2007-09-22T09:30-8:00"/>
          <ContactRef rRef="Contact01"/>
          <DropItemIntent Amount="1" Unit="500">
            <ComponentRef rRef="Item001"/>
          </DropItemIntent>
        </DropIntent>
      </DeliveryIntent>
    </ResourcePool>
  <ResourceLinkPool>
    <DeliveryIntentLink rRef="Delivery001" Usage="Input"/>
    <CustomerInfoLink rRef="Customer01" Usage="Input"/>
  </ResourceLinkPool>
  <JDF DescriptiveName="Ordered Product" ID="JDF001" Type="Product"
    Status="Waiting">
    <ResourcePool>
      <!--ResourcePool only added as placeholder-->
    </ResourcePool>
    <ResourceLinkPool>
      <!--ResourceLinkPool only added as placeholder-->
    </ResourceLinkPool>
  </JDF>
  <!--JDF-Subnode only added as placeholder-->
</JDF>
</jdf.JDF>
<Pricing >
  <Price DescriptiveName="Total" Price="1531.00"/>
  <Price DescriptiveName="Shipping and Handling" Price="42.00"/>
  <Price DescriptiveName="Tax" />
  <Price DescriptiveName="Discount" />
  <Payment>
    <PayTerm>2% 10, Net 30</PayTerm>
  </Payment>
</Pricing>
</PurchaseOrder>
</Request>
</PrintTalk>

```

6.4.2 PrintTalk Version of PurchaseOrder for Print Buyer PB2

```

<?xml version="1.0" encoding="UTF-8"?>
<PrintTalk xmlns:xsi="http://www.w3.org/2001/XMLSchema-instance"
  xmlns="http://www.printtalk.org/schema" xmlns:jdf="http://www.CIP4.org/JDFSchema_1_1"
  xsi:schemaLocation="http://www.printtalk.org/schema PrintTalk_1_1.xsd" version="1.1"
  payloadID="273743" timestamp="2007-09-05T900-0800">
  <Header>
    <From>
      <Credential domain="DNS">
        <Identity>www.texasabinet.com</Identity>
      </Credential>
      <Credential domain="DUNS">
        <Identity>05284945563</Identity>
      </Credential>
    </From>
    <To>

```

```

    <Credential domain="ECompany.com">
      <Identity>Print Dealer</Identity>
    </Credential>
    <Credential domain="DUNS">
      <Identity>063589998</Identity>
    </Credential>
  </To>
  <Sender>
    <Credential domain="DNS">
      <Identity>PrintORama.com</Identity>
      <SharedSecret>rosebud</SharedSecret>
    </Credential>
    <UserAgent>PrintORama v.1.0</UserAgent>
  </Sender>
</Header>
<Request>
  <PurchaseOrder AgentID="SteveP" AgentDisplayName="Steve Phillips"
    RequestDate="2007-09-05T900-0800" BusinessID="6789" Currency="USD"
    Expires="2007-09-09T1700-0800">
    <jdf:JDF DescriptiveName="New Years Clearance sale" ID="JDF000-Root"
      JobID="0901-1266" Type="Product" Status="Waiting" Version="1.1"
      xmlns="http://www.CIP4.org/JDFSchema_1_1">
      <ResourcePool>
        <CustomerInfo ID="Customer01" CustomerID="952501" >
          <ContactRef rRef="Contact01"/>
        </CustomerInfo>
        <Contact ID="Contact01" Class="Parameter" Status="Available"
          ContactTypes="Billing Delivery Customer">
          <Address Street="42425 Maple Street" City="San Antonio" Region="TX"
            PostalCode="78294"/>
          <Person JobTitle="Marketing Officer" FirstName="John"
            FamilyName="Stockton"/>
          <Company ID="Company02" Class="Parameter" Status="Available"
            OrganizationName="Texas Cabinet Company"/>
        </Contact>
        <DeliveryIntent ID="Delivery001" Class="Intent" Status="Available">
          <Method DataType="NameSpan" Preferred="UPS"/>
          <DropIntent>
            <Required DataType="TimeSpan" Preferred="2007-09-30T12:00-8:00"/>
            <ContactRef rRef="Contact01"/>
            <DropItemIntent Amount="100" Unit="1">
              <ComponentRef rRef="Item001"/>
            </DropItemIntent>
          </DropIntent>
        </DeliveryIntent>
      </ResourcePool>
      <ResourceLinkPool>
        <DeliveryIntentLink rRef="Delivery001" Usage="Input"/>
        <CustomerInfoLink rRef="Customer01" Usage="Input"/>
      </ResourceLinkPool>
      <JDF DescriptiveName="Ordered Product" ID="JDF001" Type="Product"
        Status="Waiting">
        <ResourcePool>
          <!--ResourcePool only added as placeholder-->
        </ResourcePool>
      </ResourceLinkPool>
    </JDF>
  </PurchaseOrder>

```

```

        <!--ResourceLinkPool only added as placeholder-->
        </ResourceLinkPool>
        <JDF>
        <!--JDF-Subnode only added as placeholder-->
        </JDF>
    </JDF>
</jdf.JDF>
<Pricing>
    <Price DescriptiveName="Total" Price="1012.80"/>
    <Price DescriptiveName="Shipping and Handling" Price="34.00"/>
    <Price DescriptiveName="Tax"/>
    <Price DescriptiveName="Discount" />
    <Payment>
        <PayTerm>2% 10, Net 30</PayTerm>
    </Payment>
</Pricing>
</PurchaseOrder>
</Request>
</PrintTalk>

```

6.4.3 PrintTalk Version of PurchaseOrder for Dealer

```

<?xml version="1.0" encoding="UTF-8"?>
<PrintTalk xmlns:xsi="http://www.w3.org/2001/XMLSchema-instance"
  xmlns="http://www.printtalk.org/schema" xmlns:jdf="http://www.CIP4.org/JDFSchema_1_1"
  xsi:schemaLocation="http://www.printtalk.org/schema PrintTalk_1_1.xsd" version="1.1"
  payloadID="13474875" timestamp="2007-09-06T1000-0800">
  <Header>
    <From>
      <Credential domain="DNS">
        <Identity>Print Dealer</Identity>
      </Credential>
      <Credential domain="DUNS">
        <Identity>063589998</Identity>
      </Credential>
    </From>
    <To>
      <Credential domain="AvalonPrinting.com">
        <Identity>Avalon Printing</Identity>
      </Credential>
      <Credential domain="DUNS">
        <Identity>012737459</Identity>
      </Credential>
    </To>
    <Sender>
      <Credential domain="DNS">
        <Identity>PrintORama.com</Identity>
        <SharedSecret>catsndogs</SharedSecret>
      </Credential>
      <UserAgent>PrintORama v.1.0</UserAgent>
    </Sender>
  </Header>
  <Request>
    <PurchaseOrder AgentID="MLow" AgentDisplayName="Margaret Low"
      RequestDate="2007-09-06T1000-0800" BusinessID="1111" Currency="USD"
      Expires="2007-09-10T1700-0800">

```

```

<jdf:JDF DescriptiveName="Flyers" ID="JDF000-Root" JobID="0901-1299" Type="Product"
  Status="Waiting" Version="1.1" xmlns="http://www.CIP4.org/JDFSchema_1_1">
  <ResourcePool>
    <CustomerInfo ID="Customer01" CustomerID="752354" >
      <ContactRef rRef="Contact01"/>
    </CustomerInfo>
    <Contact ID="Contact01" Class="Parameter" Status="Available"
      ContactTypes="Billing Customer">
      <Address Street="123 5th Street" City="New York" Region="NY"
        PostalCode="10024"/>
      <Person JobTitle="Sales Manager" FirstName="Bill" FamilyName="Mayers"/>
      <Company ID="Dealer01" Class="Parameter" Status="Available"
        OrganizationName="Print Dealer"/>
    </Contact>
    <Contact ID="Contact02" Class="Parameter" Status="Available"
      ContactTypes="Delivery">
      <Address Street="1745 First Street" City="Dublin" Region="OH"
        PostalCode="43202"/>
      <Person JobTitle="Sales Administrator" FirstName="June"
        FamilyName="Jones"/>
      <Company ID="Company01" Class="Parameter" Status="Available"
        OrganizationName="Fred's Fine Rugs"/>
    </Contact>
    <Contact ID="Contact03" Class="Parameter" Status="Available"
      ContactTypes="Delivery">
      <Address Street="42425 Maple Street" City="San Antonio" Region="TX"
        PostalCode="78294"/>
      <Person JobTitle="Marketing Officer" FirstName="John"
        FamilyName="Stockton"/>
      <Company ID="Company02" Class="Parameter" Status="Available"
        OrganizationName="Texas Cabinet Company"/>
    </Contact>
    <DeliveryIntent ID="Delivery001" Class="Intent" Status="Available">
      <Method DataType="NameSpan" Preferred="UPS"/>
      <DropIntent>
        <Required DataType="TimeSpan" Preferred="2007-09-22T09:30-8:00"/>
        <ContactRef rRef="Contact02"/>
        <DropItemIntent Amount="1" Unit="500">
          <ComponentRef rRef="Item001"/>
        </DropItemIntent>
        <jdf:GeneralID IDUsage="LineID" IDValue="DI1_1"/>
        <jdf:GeneralID IDUsage="LineID" IDValue="DI1_2"/>
        <jdf:GeneralID IDUsage="LineID" IDValue="DI1_3"/>
        <jdf:GeneralID IDUsage="LineID" IDValue="DI1_4"/>
      </DropIntent>
      <DropIntent>
        <Required DataType="TimeSpan" Preferred="2007-09-30T12:00-8:00"/>
        <ContactRef rRef="Contact03"/>
        <DropItemIntent Amount="100" Unit="1">
          <ComponentRef rRef="Item002"/>
        </DropItemIntent>
        <jdf:GeneralID IDUsage="LineID" IDValue="DI2_1"/>
        <jdf:GeneralID IDUsage="LineID" IDValue="DI2_2"/>
        <jdf:GeneralID IDUsage="LineID" IDValue="DI2_3"/>
        <jdf:GeneralID IDUsage="LineID" IDValue="DI2_4"/>
      </DropIntent>

```

```

    </DeliveryIntent>
  </ResourcePool>
  <ResourceLinkPool>
    <DeliveryIntentLink rRef="Delivery001" Usage="Input"/>
    <CustomerLink rRef="Customer01" Usage="Input"/>
  </ResourceLinkPool>
  <JDF DescriptiveName="Winter Sales Promo" ID="JDF001" JobPartID="0901-1243"
    Type="Product" Status="Waiting">
    <ResourcePool>
      <CustomerInfo ID="Customer02" CustomerJobName="0901-1243"
        CustomerOrderID="12345">
        <ContactRef rRef="Contact02"/>
      </CustomerInfo>
    </ResourcePool>
    <ResourceLinkPool>
      <CustomerInfoLink rRef="Customer02" Usage="Input"/>
    </ResourceLinkPool>
  </JDF>
  <!--JDF-Subnode only added as placeholder-->
</JDF>
</JDF>
<JDF DescriptiveName=" New Years Clearance sale" ID="JDF002"
  JobPartID="0901-1266" Type="Product" Status="Waiting">
  <ResourcePool>
    <CustomerInfo ID="Customer03" CustomerJobName="0901-1266"
      CustomerOrderID="6789">
      <ContactRef rRef="Contact03"/>
    </CustomerInfo>
  </ResourcePool>
  <ResourceLinkPool>
    <CustomerInfoLink rRef="Customer03" Usage="Input"/>
  </ResourceLinkPool>
</JDF>
  <!-- JDF-Subnode only added as placeholder-->
</JDF>
</JDF>
</jdf.JDF>
<Pricing >
  <Price LineID="DI1_1" DescriptiveName="Total" Price="871.10"/>
  <Price LineID="DI1_2" DescriptiveName="Shipping and Handling" Price="12.00"/>
  <Price LineID="DI1_3" DescriptiveName="Tax" />
  <Price LineID="DI1_4" DescriptiveName="Discount" />
  <Price LineID="DI2_1" DescriptiveName="Total" Price="612.80"/>
  <Price LineID="DI2_2" DescriptiveName="Shipping and Handling" Price="34.00"/>
  <Price LineID="DI2_3" DescriptiveName="Tax" HasPrice="false"/>
  <Price LineID="DI2_4" DescriptiveName="Discount" HasPrice="false"/>
  <Payment>
    <PayTerm>2% 10, Net 30</PayTerm>
  </Payment>
</Pricing>
</PurchaseOrder>
</Request>
</PrintTalk>

```

6.4.4 PrintTalk Version of OrderStatusResponse (1) for Dealer

```

<?xml version="1.0" encoding="UTF-8"?>
<PrintTalk xmlns:xsi="http://www.w3.org/2001/XMLSchema-instance"
  xmlns="http://www.printtalk.org/schema"
  xmlns:jdf="http://www.CIP4.org/JDFSchema_1_1"
  xsi:schemaLocation="http://www.printtalk.org/schema PrintTalk_1_1.xsd" version="1.1"
  payloadID="187455" timestamp="2007-09-20T1000-0800">
  <Header>
    <From>
      <Credential domain="AvalonPrinting.com">
        <Identity>Avalon Printing</Identity>
      </Credential>
      <Credential domain="DUNS">
        <Identity>012737459</Identity>
      </Credential>
    </From>
    <To>
      <Credential domain="DNS">
        <Identity>Print Dealer</Identity>
      </Credential>
      <Credential domain="DUNS">
        <Identity>063589998</Identity>
      </Credential>
    </To>
    <Sender>
      <Credential domain="DNS">
        <Identity>PrintORama.com</Identity>
        <SharedSecret>new york</SharedSecret>
      </Credential>
      <UserAgent>PrintORama v.1.0</UserAgent>
    </Sender>
  </Header>
  <Request>
    <OrderStatusResponse AgentID="PrintORama" AgentDisplayName="PrintORama Auto Generated"
      RequestDate="2007-09-20T1000-0800" BusinessID="234" BusinessRefID="Conf_1111">
      <jdf:Notification JobID = "0901-1243" Type = "Milestone">
        <Milestone MilestoneType = "ShippingCompleted"/>
      </jdf:Notification>
      <jdf:Notification JobID = "0901-1266" Type = "Milestone">
        <Milestone MilestoneType = "ShippingCompleted"/>
      </jdf:Notification>
    </OrderStatusResponse>
  </Request>
</PrintTalk>

```

6.4.5 PrintTalk Version of OrderStatusResponse (2) for Print Buyer PB1

```

<?xml version="1.0" encoding="UTF-8"?>
<PrintTalk xmlns:xsi="http://www.w3.org/2001/XMLSchema-instance"
  xmlns="http://www.printtalk.org/schema"
  xmlns:jdf="http://www.CIP4.org/JDFSchema_1_1"
  xsi:schemaLocation="http://www.printtalk.org/schema PrintTalk_1_1.xsd" version="1.1"
  payloadID="187655" timestamp="2007-09-20T1030-0800">
  <Header>
    <From>
      <Credential domain="DNS">

```

```

        <Identity>Print Dealer</Identity>
    </Credential>
    <Credential domain="DUNS">
        <Identity>063589998</Identity>
    </Credential>
</From>
<To>
    <Credential domain="DNS">
        <Identity>www.fredsfinerugs.com</Identity>
    </Credential>
    <Credential domain="DUNS">
        <Identity>063887745</Identity>
    </Credential>
</To>
<Sender>
    <Credential domain="DNS">
        <Identity>PrintORama.com</Identity>
        <SharedSecret>catsndogs</SharedSecret>
    </Credential>
    <UserAgent>PrintORama v.1.0</UserAgent>
</Sender>
</Header>
<Request>
    <OrderStatusResponse AgentID="Dealer" AgentDisplayName="Dealer User"
        RequestDate="2007-09-20T1030-0800"
        BusinessID="1222" BusinessRefID="Conf_12345">
        <jdf:Notification JobID = "0901-1243" Type = "Milestone">
            <Milestone MilestoneType = "ShippingCompleted"/>
        </jdf:Notification>
    </OrderStatusResponse>
</Request>
</PrintTalk>

```

6.4.6 PrintTalk Version of OrderStatusResponse (3) for Print Buyer PB2

```

<?xml version="1.0" encoding="UTF-8"?>
<PrintTalk xmlns:xsi="http://www.w3.org/2001/XMLSchema-instance"
    xmlns="http://www.printtalk.org/schema"
    xmlns:jdf="http://www.CIP4.org/JDFSchema_1_1"
    xsi:schemaLocation="http://www.printtalk.org/schema PrintTalk_1_1.xsd" version="1.1"
    payloadID="187655" timestamp="2007-09-20T1030-0800">
    <Header>
        <From>
            <Credential domain="DNS">
                <Identity>Print Dealer</Identity>
            </Credential>
            <Credential domain="DUNS">
                <Identity>063589998</Identity>
            </Credential>
        </From>
        <To>
            <Credential domain="DNS">
                <Identity>www.texasabinet.com</Identity>
            </Credential>
            <Credential domain="DUNS">
                <Identity>05284945563</Identity>
            </Credential>
        </To>
    </Header>

```



```
</Credential>
</To>
<Sender>
  <Credential domain="DNS">
    <Identity>PrintORama.com</Identity>
    <SharedSecret>catsndogs</SharedSecret>
  </Credential>
  <UserAgent>PrintORama v.1.0</UserAgent>
</Sender>
</Header>
<Request>
  <OrderStatusResponse AgentID="Dealer" AgentDisplayName="Dealer User"
    RequestDate="2007-09-20T1030-0800"
    BusinessID="1223" BusinessRefID="Conf_6789">
    <jdf:Notification JobID = "0901-1266" Type = "Milestone">
      <Milestone MilestoneType = "ShippingCompleted"/>
    </jdf:Notification>
  </OrderStatusResponse>
</Request>
</PrintTalk>
```

7 References

7.1 Normative References

- [JDF1.3] Job Definition Format (JDF), Version 1.3, published September 2005, available at <http://www.cip4.org>.
- [cXML] Commerce XML, published April 2007, available at <http://www.cxml.org/>.
- [cXMLUG] cXML User's Guide, published April 2007, available at <http://xml.cxml.org/current/cXMLUsersGuide.pdf>.
- [ISO4217] Codes for the representation of currencies and funds, published April 2, 2007, available at <http://www.iso.org>.
- [ISO8601] Data elements and interchange formats – Information interchange – Representation of dates and times, published December 12, 2004, available at <http://www.iso.org>.
- [ISO9362] Banking – Banking telecommunication messages – Bank identifier codes, published October 15, 1997, available at <http://www.iso.org>.
- [XML] Extensible Markup Language (XML) 1.0 (Fourth Edition), published September 2006, available at <http://www.w3.org/TR/2006/REC-xml-20060816/>.
- [XMLNS] Namespaces in XML 1.0 (Second Edition), published August 2006, available at <http://www.w3.org/TR/REC-xml-names/>.

7.2 Informative References