

PRINT  TALK

TM

---

# PrintTalk Specification

---

2.0-IP-1

20 December 2018

**CIP4**  
  
ORGANIZATION

CIP4 THANKS ITS PARTNER LEVEL MEMBERS



# Table of Contents

<b>Chapter 1 Introduction</b>	<b>1</b>
1.1 Intended Audience	.1
1.2 Use of XML	.1
1.3 Conventions Used in this Specification	.1
1.4 Glossary	.1
<b>Chapter 2 Structure</b>	<b>3</b>
2.1 HTTP Content-Type	3
2.2 PrintTalk	3
2.3 Header	3
2.4 Request	6
2.5 PrintTalk Extensibility	6
<b>Chapter 3 Business Objects</b>	<b>7</b>
3.1 ArtDeliveryRequest	7
3.2 ArtDeliveryResponse	7
3.3 Cancellation	8
3.4 Confirmation	8
3.5 Invoice	8
3.6 OrderStatusRequest	8
3.7 OrderStatusResponse	9
3.8 ProofApprovalRequest	9
3.9 ProofApprovalResponse	10
3.10 PurchaseOrder	10
3.11 Quotation	11
3.12 Refusal	12
3.13 ReturnJob	13
3.14 RFQ	13
3.15 StockLevelRequest	14
3.16 StockLevelResponse	15
<b>Chapter 4 Subelements</b>	<b>17</b>
4.1 Additional	17
4.2 Payment	17
4.3 Price	18
4.4 Pricing	19
<b>Chapter 5 Building a System</b>	<b>21</b>
5.1 System Requirements	21

<b>Appendix A Workflow Diagrams</b>	<b>23</b>
<b>Appendix B Usage of PrintTalk IDs</b>	<b>27</b>
B.1 BusinessID and BusinessRefID	27
B.2 ReplaceID	30
B.3 ReorderID	31
B.4 xjdf:XJDF/@JobID	31
B.5 xjdf:CustomerInfo/@CustomerOrderID	32
<b>Appendix C References</b>	<b>33</b>

# 1 Introduction

**PrintTalk** is an XML standard that is maintained by **CIP4** and provides a single format for *Print Providers* to collaboratively communicate *Business Transactions* and specifications of *Print Product* both with their *Print Buyers* and among themselves. Print industry professionals from a wide range of organizations contributed to the design of **PrintTalk**. Such organizations include eCommerce companies, print business management systems, print providers, and print equipment manufacturers.

The **PrintTalk** standard embraces ▶ [XJDF 2.0] and ▶ [cXML 1.2]. These bracketed references are defined in ▶ Appendix C References. Whereas **XJDF** describes the printed product to be produced, **PrintTalk** specifies the business data and context between *Print Provider* and *Print Buyer*.

For details about **XJDF**, see ▶ [XJDF 2.0].

The **PrintTalk** interface specification is distributed free of any license fees or royalties in order to address the need for end-to-end connectivity in the printing industry.

This specification details the requirements of the XML data in ▶ Chapter 2 Structure, ▶ Chapter 3 Business Objects and ▶ Chapter 4 Subelements. The requirements for the transport protocol and security are defined in ▶ Chapter 5 Building a System.

## 1.1 Intended Audience

While print industry professionals may find parts of this specification to be useful, our primary goal is to describe the **PrintTalk** protocol to programmers who wish to implement the **PrintTalk** interface specification within their software products. A working knowledge of XML and familiarity with **XJDF** is required to fully understand this document.

## 1.2 Use of XML

**PrintTalk** is encoded as XML and SHALL be a valid XML document according to ▶ [XML]. The namespace prefix for items that are defined in the **PrintTalk** namespace should be one of 'ptk' or no prefix, i.e. the default namespace.

**Note:** Most data in **PrintTalk** is encoded in XML attributes; XML elements provide the hierarchical structure of the data.

**Note:** The data model does not require use of XML. Conceptually, any hierarchical data syntax could be used. XML was chosen to align with the **XJDF** specification and because it is in widespread use. In addition, leaving the choice of an underlying grammar open would lead to non interoperable implementations.

### 1.2.1 Use of XML Schema

The XML schema for **PrintTalk** is designed to ensure that **PrintTalk** documents are syntactically valid, thus **PrintTalk** documents that are successfully validated against the **PrintTalk** schema SHALL be considered conformant to the syntax requirements described in this specification.

## 1.3 Conventions Used in this Specification

This specification uses the same conventions and formatting as ▶ [XJDF 2.0]. See the appropriate section in the introduction in ▶ [XJDF 2.0] for details.

## 1.4 Glossary

This section defines terminology used throughout this document. References to other documents are indicated with square brackets, e.g. ▶ [XJDF 2.0]. For most terms, see the terminology section in ▶ [XJDF 2.0].

Table 1.1: Glossary

TERM	DEFINITION
<b>Business Object</b>	The portion of a <b>PrintTalk</b> document that describes a <i>Business Transaction</i> . For example an <i>RFQ Business Object</i> describes a request-for-quote <i>Business Transaction</i> and a <i>PurchaseOrder Business Object</i> describes a purchase order <i>Business Transaction</i> .
<b>Business Transaction</b>	When a <i>Print Buyer</i> sends a <b>PrintTalk</b> document to a <i>Print Provider</i> , or a <i>Print Provider</i> sends a <b>PrintTalk</b> document to a <i>Print Buyer</i> , the <i>Business Object</i> within the <b>PrintTalk</b> document describes a business transaction between the <i>Print Buyer</i> and <i>Print Provider</i> .
<b>Change Order</b>	A <i>Business Transaction</i> that requests changes to a <i>Confirmed Job</i> .
<b>Confirmed Job</b>	A job (producing a <i>Print Product</i> ) that a <i>Print Buyer</i> and <i>Print Provider</i> have agreed to after negotiating a contract for it. The <i>Print Provider</i> consummates the agreement by confirming the <i>Print Buyer's</i> purchase order.

Table 1.1: Glossary

TERM	DEFINITION
<b>Invalid</b>	When used in the context of a <i>Business Object</i> , it refers to a <i>Business Object</i> that is no longer <i>Pending</i> and is thus no longer accessible.
<b>Item</b>	Something that is priced separately in a <a href="#">Quotation</a> , <a href="#">PurchaseOrder</a> or <a href="#">Invoice</a> .
<b>Negotiation Phase</b>	The phase during which a <i>Print Buyer</i> and <i>Print Provider</i> negotiate a contract for a <i>Print Product</i> by exchanging <i>Business Objects</i> . The <i>Production Phase</i> follows the <i>Negotiation Phase</i> .
<b>Pending</b>	When used in the context of a <i>Business Object</i> , it refers to a <i>Pending Business Object</i> .
<b>Pending Business Object</b>	A <i>Business Object</i> that other <i>Business Objects</i> can reference via <a href="#">@BusinessRefID</a> and <a href="#">@ReplaceID</a> . A <i>Business Object</i> X is pending from the time a <i>Print Buyer</i> or <i>Print Provider</i> creates it until: <ul style="list-style-type: none"> <li>• It expires.</li> <li>• Its creator sends a <a href="#">Cancellation</a> whose <a href="#">@BusinessRefID</a> references X.</li> <li>• Its creator sends a <i>Business Object</i> whose <a href="#">@ReplaceID</a> references X.</li> </ul>
<b>Print Buyer</b>	The customer that is buying a <i>Print Product</i> .
<b>Print Product</b>	The printed matter produced according to a contract negotiated between the <i>Print Buyer</i> and <i>Print Provider</i> using the <b>PrintTalk</b> negotiation process.
<b>Print Provider</b>	The producer of the <i>Print Product</i> .
<b>PrintTalk Document</b>	An XML document whose root element has a type of "PrintTalk" and which follows the rules of this document, the <b>PrintTalk</b> 2.0 specification.
<b>Production Phase</b>	The phase during which a <i>Print Provider</i> produces and ships a <i>Print Product</i> .
<b>Re-Quote</b>	An additional <a href="#">Quotation</a> for a variation in a job, for which the <i>Print Provider</i> has already issued a <a href="#">Quotation</a> .
<b>Supersede</b>	If <i>Business Object</i> X <i>Supersedes</i> <i>Business Object</i> Y, <i>Business Object</i> X becomes a <i>Pending Business Object</i> and <i>Business Object</i> Y becomes a <i>Superseded Business Object</i> .
<b>Superseded Business Object</b>	When a <i>Print Buyer</i> or <i>Print Provider</i> sends a <i>Business Object</i> X with a <a href="#">@ReplaceID</a> that references some other <i>Business Object</i> Y of the same type, <i>Business Object</i> Y becomes a <i>Superseded Business Object</i> and <i>Business Object</i> X become a <i>Pending Business Object</i> . A <i>Superseded Business Object</i> is <i>Invalid</i> and not <i>Pending</i> .
<b>Superseding Business Object</b>	A <i>Business Object</i> that <i>Supersedes</i> some other <i>Business Object</i> .

# 2 Structure

A **PrintTalk** document applies concepts that are defined in ▶ [cXML 1.2] to the graphic arts. All **PrintTalk** elements SHALL be declared in the **PrintTalk** namespace. See ▶ Table 2.1 PrintTalk Element for details. Like cXML, the top two elements of a **PrintTalk** document SHALL be a **Header** element and a **Request** element. The header concept comes directly from cXML, and identifies the parties involved in this correspondence. In some cases the definitions of **Header** and its subelements have been clarified for usage in business transactions that are unique to the graphic arts such as web to print. The **Request** element SHALL contain exactly one **PrintTalk Business Object**.

Within this document, whenever elements or attributes are specified with an “xjdf” namespace prefix, this prefix specifies the presence of that element from the **XJDF** namespace, i.e. [http://www.CIP4.org/JDFSchema\\_2\\_0](http://www.CIP4.org/JDFSchema_2_0). A **PrintTalk** implementation SHALL support standard namespace handling as defined in ▶ [XMLNS], and SHOULD conform to the recommended use of prefix identifiers as specified in ▶ [XJDF 2.0].

## 2.1 HTTP Content-Type

If **PrintTalk** is posted over HTTP, the respective content type header value SHOULD be set to: `application/vnd-cip4-ptk+xml`.

## 2.2 PrintTalk

The root element in a **PrintTalk** document SHALL be an element whose type is **PrintTalk**. An example is:

```
<PrintTalk xmlns="http://www.printtalk.org/schema_20"
  Timestamp="2018-12-10T15:51:23+01:00" payloadID="P_000164">
</PrintTalk>
```

Table 2.1: PrintTalk Element

NAME	DATA TYPE	DESCRIPTION
<i>payloadID</i> ?	NMTOKEN	@ <i>payloadID</i> is a unique identifier with respect to space and time, used for logging purposes to identify documents. This value SHOULD NOT change for retry attempts. See ▶ [cXML 1.2].
<i>Timestamp</i>	dateTime	From cXML: The date and time the message was sent, in ▶ [ISO8601] format. @ <i>Timestamp</i> SHALL NOT change for retry attempts.
<i>xmlns</i> ?	URL	<b>PrintTalk</b> supports the use of XML namespaces. The namespace SHALL be declared in the <b>PrintTalk</b> element. For details on using namespaces in XML, see ▶ [XMLNS]. For version 2.0 of <b>PrintTalk</b> , <code>xmlns = "http://www.print-talk.org/schema_20"</code> . All elements that are defined in this specification are defined in the XML schema for this namespace, including those derived directly from ▶ [cXML 1.2], but excluding those defined in ▶ [XJDF 2.0].
<b>Header</b>	element	The header defined in [cXML 1.2] and as further specified in this document.
<b>Request</b>	element	The request defined in [cXML 1.2] and as further specified in this document.

## 2.3 Header

**Header** is defined in cXML. Refer to the cXML users guide ▶ [cXML 1.2].

The **From**, **To** and **Sender** elements allow systems to identify and authorize parties. The explicit or implied value of **Sender/Credential**[@*domain*="xjdf:URL"] also provides the receiver with the URL where it should send any asynchronous requests to the originator.

The **From** and **To** elements in a document SHALL NOT change when a **PrintTalk** document is forwarded by an intermediate system. The **Sender** element SHALL be provided by any system other than the original creator of the document that is specified in **From**. For example, in an **RFQ**, the “From” party is the *Print Buyer*. The “To” party is the *Print Provider*. In the subsequent **Quotation**, those roles are reversed.

Referenced by: [PrintTalk](#)

Table 2.2: Header Element

NAME	DATA TYPE	DESCRIPTION
<a href="#">From</a>	element	<a href="#">From</a> SHALL identify the original sender of the <b>PrintTalk</b> transaction. This will typically be the <i>Print Buyer</i> in a transaction from <i>Print Buyer</i> to <i>Print Provider</i> . In a transaction from <i>Print Provider</i> to <i>Print Buyer</i> it will be typically the <i>Print Provider</i> . See ▶ [cXML 1.2].
<a href="#">Sender</a> ?	element	<a href="#">Sender</a> SHALL identify the current sender of the <b>PrintTalk</b> transaction. This will typically be an intermediate broker such as a web to print system that connects <i>Print Buyer</i> and <i>Print Provider</i> . If no intermediate actor is involved <a href="#">Sender</a> SHALL NOT be provided and <a href="#">From</a> SHALL contain the details of the sender. See ▶ [cXML 1.2].
<a href="#">To</a>	element	<a href="#">To</a> SHALL identify the final recipient of the <b>PrintTalk</b> transaction. This will typically be the <i>Print Provider</i> in a transaction from <i>Print Buyer</i> to <i>Print Provider</i> and will be the <i>Print Buyer</i> in a transaction from <i>Print Provider</i> to <i>Print Buyer</i> . See ▶ [cXML 1.2].

### Example 2.1: Example of a Header

The following is an example of a [Header](#) taken from a [Quotation](#). In this example, the “To” party is a *Print Buyer* company called “PeterPan”. The DUNS number uniquely identifies them. The “From” party is a *Print Provider*. It too, is uniquely identified by a DUNS number. The “Sender” is the party sending this **PrintTalk** document. In this case, it is an eCom-merce company.

```
<Header>
  <From>
    <Credential domain="xjdf:URL">
      <Identity>https://printer.com</Identity>
    </Credential>
  </From>
  <To>
    <Credential domain="xjdf:URL">
      <Identity>https://customer.com</Identity>
    </Credential>
  </To>
</Header>
```

#### 2.3.1 From

Referenced by: [Header](#)

Table 2.3: From Element

NAME	DATA TYPE	DESCRIPTION
<a href="#">Credential</a> +	element	A <a href="#">Credential</a> identifies and authenticates the various parties involved in a transaction.
<a href="#">UserAgent</a> ?	element	See ▶ [cXML 1.2].



### 2.3.2 To

Referenced by: [Header](#)

Table 2.4: To Element

NAME	DATA TYPE	DESCRIPTION
<a href="#">Credential</a> +	element	A <a href="#">Credential</a> identifies and authenticates the various parties involved in a transaction.

### 2.3.3 Sender

Referenced by: [Header](#)

Table 2.5: Sender Element

NAME	DATA TYPE	DESCRIPTION
<a href="#">Credential</a> +	element	A <a href="#">Credential</a> identifies and authenticates the various parties involved in a transaction.
<a href="#">UserAgent</a> ?	element	See ▶ [cXML 1.2].

### 2.3.4 Credential

A [Credential](#) identifies and authenticates the various parties involved in a transaction.

Referenced by: [From](#), [Sender](#), [To](#)

Table 2.6: Credential Element

NAME	DATA TYPE	DESCRIPTION
<a href="#">domain</a>	NMTOKEN	<p>From cXML: Specifies the type of credential. This attribute allows documents to contain multiple types of credentials for multiple authentication domains. When using a propriety value for <a href="#">@domain</a> it SHOULD use a form similar to '<a href="#">xjdf:CompanyID</a>' below, i.e. use a namespace like prefix as an indication for the source of the value.</p> <p><b>Values include:</b></p> <ul style="list-style-type: none"> <li><a href="#">DUNS</a> - The D-U-N-S number, see ▶ [DUNS].</li> <li><a href="#">xjdf:CompanyID</a> - Company identifier as specified in <a href="#">xjdf:Company/@CompanyID</a>.</li> <li><a href="#">xjdf:CustomerID</a> - Customer identifier in the print provider system. If an <b>XJDF</b> is provided in the <i>Business Object</i>, the value of <a href="#">Identity</a> SHALL match a <a href="#">xjdf:CustomerInfo/@CustomerID</a> in the referenced <b>XJDF</b>.</li> <li><a href="#">xjdf:Email</a> - The email address as a URL according to ▶ [RFC6068].</li> <li><a href="#">xjdf:ResponseURL</a> - The URL to which asynchronous responses to the business object in this <a href="#">Request</a> SHALL be sent. A <a href="#">Credential</a>[<a href="#">@domain</a>="<a href="#">xjdf:ResponseURL</a>"] SHALL NOT be provided more than once in one <a href="#">Header</a> and SHALL only be provided in the context of either <a href="#">From</a> or <a href="#">Sender</a>. If <a href="#">Credential</a>[<a href="#">@domain</a>="<a href="#">xjdf:ResponseURL</a>"] is not present it defaults to the explicit or implied value of <a href="#">Sender/Credential</a>[<a href="#">@domain</a>="<a href="#">xjdf:URL</a>"].</li> <li><a href="#">xjdf:ShopID</a> - Identifier of the web shop if the <i>Business Object</i> has been submitted in a web-to-print environment. If an <b>XJDF</b> is provided in the <i>Business Object</i>, the value of <a href="#">Identity</a> SHALL match a <a href="#">xjdf:XJDF/xjdf:GeneralID</a>[<a href="#">@IDUsage</a>="<a href="#">ShopID</a>"]/<a href="#">@IDValue</a> in the referenced <b>XJDF</b>.</li> <li><a href="#">xjdf:URL</a> - The URL of the receiving web server (To) or sending web server (From, Sender).</li> <li><a href="#">xjdf:UserID</a> - Identifier of the individual user in the <i>Print Buyer</i> system. If an <b>XJDF</b> is provided in the <i>Business Object</i>, the value of <a href="#">Identity</a> SHALL match a <a href="#">xjdf:Contact/@UserID</a> in the referenced <b>XJDF</b>.</li> </ul>
<a href="#">Identity</a>	element	<p>From cXML: The text in the element states who the <a href="#">Credential</a> represents. For example, the text MAY be an email address or some other unique string of characters.</p> <p>See ▶ [cXML 1.2].</p>

## 2.4 Request

**Request** is originally defined in cXML. Refer to the cXML users guide ▶ [cXML 1.2]. It has been enhanced in **PrintTalk** to be the container for generic data that is related to a business object, but independent of the specific type of business object.

Referenced by: **PrintTalk**

Table 2.7: Request Element

NAME	DATA TYPE	DESCRIPTION
<i>BusinessID</i>	NMTOKEN	The unique identifier for this <b>Request</b> and for the <i>Business Object</i> it contains.
<i>BusinessRefID</i> ?	NMTOKEN	The value of <i>@BusinessRefID</i> SHALL be the same as the <i>@BusinessID</i> of some other pending <i>Business Object</i> which acts as the primary parameter to the <i>Business Transaction</i> that this <b>PrintTalk</b> document represents. Prior to a <b>PurchaseOrder</b> , a <i>@BusinessRefID</i> SHALL refer to a <i>Business Object</i> that was received from the other party. Once a <b>PurchaseOrder</b> has been placed <i>Request/@BusinessID</i> of the <b>PurchaseOrder</b> SHALL be used as the <i>@BusinessRefID</i> of all following <i>Business Objects</i> . For example, a <i>Request/@BusinessID</i> references an <b>RFQ</b> if it provides a quote for the <b>RFQ</b> , or it references a <b>PurchaseOrder</b> if it specifies a <i>Change Order</i> .
<i>DescriptiveName</i> ?	string	Human readable summary description of the <i>Business Object</i> in this <b>Request</b> .
< <b>BusinessObject</b> >	element	A <b>PrintTalk Request</b> SHALL contain exactly one <i>Business Object</i> . See ▶ Chapter 3 <i>Business Objects</i> .
<foreign namespace elements> *	element	Any elements in a foreign namespace. These elements should not duplicate any <b>PrintTalk</b> functionality.

## 2.5 PrintTalk Extensibility

The **PrintTalk** specification aims to support plug-and-play as much as possible. Nonetheless, **PrintTalk** is meant to be flexible and therefore, as each vendor may have private data to include in the **PrintTalk** files, it allows for this data to be added using a foreign namespace. However, foreign namespace extensions SHOULD NOT duplicate functionality of attributes and elements defined by **PrintTalk**.

This section describes how **PrintTalk** MAY be extended. **PrintTalk** extensibility SHALL be implemented using XML namespaces; see ▶ [XMLNS].

### 2.5.1 Foreign Namespaces

For **PrintTalk** foreign namespaces are defined to be any namespace except for those reserved for **PrintTalk** and **XJDF**. The namespace for **PrintTalk** is defined in *PrintTalk/@xmlns*. See ▶ [XJDF 2.0] for the **XJDF** definition. The use of short-hand prefixes for namespaces is recommended but those reserved for **PrintTalk** and **XJDF** SHOULD NOT be used for foreign namespaces.

Attributes in a foreign namespace MAY be added to any **PrintTalk** element.

Elements in a foreign namespace SHALL NOT be specified in any **PrintTalk** element other than the **Request** element. The children of the **Request** element SHALL be ordered so that all elements in a foreign namespace follow all of the elements in the **PrintTalk** namespace.

# 3 Business Objects

## 3.1 ArtDeliveryRequest

An **ArtDeliveryRequest** allows the *Print Buyer* to upload artwork such as PDF content to the *Print Provider*. **Request/@BusinessRefID** of the **ArtDeliveryRequest** Business Object references the order's **PurchaseOrder**. The order's **PurchaseOrder** is either the initial **PurchaseOrder** if no *Change Orders* have occurred, or the latest accepted **PurchaseOrder** if a *Change Order* has been made.

References: **PurchaseOrder**

Flow: *Print Buyer to Print Provider*

Table 3.1: ArtDeliveryRequest Element

NAME	DATA TYPE	DESCRIPTION
<b>ArtDelivery</b> +	element	Each <b>ArtDelivery</b> SHALL provide artwork for one or more products. Products are referenced by <b>xjdf:Product/@ExternalID</b> .

### 3.1.1 ArtDelivery

Table 3.2: ArtDelivery Element

NAME	DATA TYPE	DESCRIPTION
<b>UpdateMethod</b>	enumeration	<b>@UpdateMethod</b> SHALL define the usage of the artwork. <b>Allowed values are:</b> <b>Add</b> - Add the artwork to the product. <b>Replace</b> - Replace existing artwork in the same scope with the delivered artwork.
<b>xjdf:XJDF</b>	element	An <b>XJDF</b> that includes an <b>xjdf:ResourceSet/[@Name="RunList"]</b> that references the artwork. If multiple <b>xjdf:Product</b> elements are present in the <b>XJDF</b> , the <b>xjdf:ResourceSet/[@Name="RunList"]</b> SHALL be partitioned by <b>xjdf:Part/@ProductPart</b> .

## 3.2 ArtDeliveryResponse

An **ArtDeliveryResponse** allows the *Print Provider* to provide the *Print Buyer* with information about previously uploaded art deliveries. **Request/@BusinessRefID** of the **ArtDeliveryResponse** Business Object SHALL reference the *Business Object* that provided the artwork. This SHALL be either a **PurchaseOrder** or an **ArtDeliveryRequest**.

### 3.2.1 ArtDeliveryResponse

References: **ArtDeliveryRequest, PurchaseOrder**

Flow: *Print Provider to Print Buyer*

Table 3.3: ArtDeliveryResponse Element

NAME	DATA TYPE	DESCRIPTION
<b>Result</b>	enumeration	Result of the art delivery. <b>Allowed values are:</b> <b>Accepted</b> - The artwork was accepted and all artwork for the job is now in place. Warnings may have occurred. <b>AcceptedWaiting</b> - The artwork was accepted. There is still missing artwork. Warnings may have occurred. <b>Rejected</b> - The artwork was rejected. Additional details SHOULD be provided in <b>xjdf:PreflightReport</b> .
<b>xjdf:PreflightReport</b> ?	element	<b>xjdf:PreflightReport</b> should provide details of the result of the upload.

### 3.3 Cancellation

A *Print Buyer* or a *Print Provider* sends a **Cancellation** to cancel a previously sent *Business Object*.

For a *Print Provider* to cancel for a **Quotation** or **Confirmation**, it SHALL send a **Cancellation** whose `@BusinessRefID` references the **Quotation** or **Confirmation**.

For a *Print Buyer* to cancel for an **RFQ** or **PurchaseOrder**, it SHALL send to *Print Provider* a **Cancellation** whose `@BusinessRefID` references the **RFQ** or **PurchaseOrder**.

References: **Confirmation, PurchaseOrder, Quotation, RFQ**

Flow: *Print Buyer to Print Provider, Print Provider to Print Buyer*

Table 3.4: Cancellation Element

NAME	DATA TYPE	DESCRIPTION
<code>JobIdRef</code> ?	string	Reference to <code>xjdf:XJDF/@JobID</code> of the cancelled job. If not present, all jobs of the <b>PurchaseOrder</b> referred to in <code>@BusinessRefID</code> are cancelled.
<code>xjdf:Comment</code> ?	element	Human readable comments about this cancellation.

### 3.4 Confirmation

If a *Print Provider* accepts a **PurchaseOrder**, it SHOULD send a **Confirmation** whose `@BusinessRefID` references the accepted **PurchaseOrder**.

References: **PurchaseOrder**

Flow: *Print Provider to Print Buyer*

Table 3.5: Confirmation Element

NAME	DATA TYPE	DESCRIPTION
<code>xjdf:Comment</code> ?	element	Human readable comments about this confirmation.

### 3.5 Invoice

The *Print Provider* typically sends an **Invoice** to the *Print Buyer* after the job is shipped. It may also send an **Invoice** several times, when certain milestones during the *Production Phase* are reached or after a job is cancelled. An **Invoice** MAY include additional charges or discounts.

To request payment, the *Print Provider* SHALL send an **Invoice** whose `@BusinessRefID` references either the:

- **PurchaseOrder** for a completed job or for milestones during the *Production Phase* or
- **Cancellation** for a cancelled job.

References: **Cancellation, PurchaseOrder**

Flow: *Print Provider to Print Buyer*

Table 3.6: Invoice Element

NAME	DATA TYPE	DESCRIPTION
<code>Expires</code>	dateTime	Date/time when this <b>Invoice</b> becomes <i>Invalid</i> . This date is the due date after which a subsequent <b>Invoice</b> MAY contain late payment fees.
<code>Pricing</code>	element	<b>Pricing</b> SHALL specify the price of the products or services described by this <b>Invoice</b> .

### 3.6 OrderStatusRequest

An **OrderStatusRequest** allows the *Print Buyer* to query the *Print Provider* for details of the order status.

If a *Print Buyer* wants the status of an order, it shall send to the *Print Provider* an **OrderStatusRequest** whose `Request/@BusinessRefID` references the order's **PurchaseOrder**. The order's **PurchaseOrder** is defined as either the initial **PurchaseOrder** if no *Change Orders* have occurred or the latest accepted **PurchaseOrder** if a *Change Order* has been made.

References: **PurchaseOrder**

Flow: *Print Buyer to Print Provider*

Table 3.7: OrderStatusRequest Element

NAME	DATA TYPE	DESCRIPTION
<a href="#">StatusRequest</a> +	element	Individual status request description.

### 3.6.1 StatusRequest

Referenced by: [OrderStatusRequest](#)

Table 3.8: StatusRequest Element

NAME	DATA TYPE	DESCRIPTION
<a href="#">JobIDRef</a> ?	NMTOKEN	<a href="#">@JobIDRef</a> SHALL reference an <a href="#">xjdf:XJDF/@JobID</a> that was present in the <a href="#">PurchaseOrder</a> that is referenced by <a href="#">Request/@BusinessRefID</a> . If not specified, this <a href="#">StatusRequest</a> refers to all jobs specified by <a href="#">Request/@BusinessRefID</a> .
<a href="#">ResponseDetails</a> ?	enumeration	The level of detail requested in the <a href="#">OrderStatusResponse</a> . <b>Allowed values are:</b> <b>Brief</b> - Include only the latest <a href="#">xjdf:Milestone</a> notification of the current job status. <b>CompletedMilestones</b> - Include all completed <a href="#">xjdf:Milestone</a> notification elements of the current job and the <a href="#">xjdf:Milestone</a> notification elements of steps that have begun processing.
<a href="#">Subscribed</a>	boolean	If <a href="#">@Subscribed</a> = "true", then this <a href="#">StatusRequest</a> is a subscription for multiple <a href="#">OrderStatusResponse</a> messages; else this <a href="#">StatusRequest</a> is a request for one individual <a href="#">OrderStatusResponse</a> message. The trigger conditions for subscribed <a href="#">OrderStatusResponse</a> messages are implementation dependent. <a href="#">OrderStatusResponse</a> messages SHOULD be sent whenever a relevant status change of the subscribed order takes place, i.e. whenever a new <a href="#">xjdf:Milestone</a> is reached.

## 3.7 OrderStatusResponse

An [OrderStatusResponse](#) is the response to an [OrderStatusRequest](#).

If a *Print Provider* receives an [OrderStatusRequest](#), it SHALL send to the *Print Buyer* an [OrderStatusResponse](#) whose [@BusinessRefID](#) references the [OrderStatusRequest](#).

A *Print Provider* MAY send to a *Print Buyer* an automatically generated [OrderStatusResponse](#) which describes the status of an order whose associated [PurchaseOrder](#) is referenced by the [@BusinessRefID](#).

References: [OrderStatusRequest](#), [PurchaseOrder](#)

Flow: *Print Provider to Print Buyer*

Table 3.9: OrderStatusResponse Element

NAME	DATA TYPE	DESCRIPTION
<a href="#">xjdf:Notification</a> *	element	<a href="#">xjdf:Notification</a> elements that contain an <a href="#">xjdf:Milestone</a> child element that describes the current status of the job. <a href="#">xjdf:Notification/@JobID</a> SHOULD be specified in <a href="#">xjdf:Notification</a> elements that reside in an <a href="#">OrderStatusResponse</a> . See ▶ [XJDF 2.0].

## 3.8 ProofApprovalRequest

If a *Print Provider* wants a *Print Buyer* to approve a soft or hard copy order, the *Print Provider* SHALL send to the *Print Buyer* a [ProofApprovalRequest](#) whose [@BusinessRefID](#) references the order's [PurchaseOrder](#). The order's [PurchaseOrder](#) is either the initial [PurchaseOrder](#) if no *Change Orders* have occurred, or the latest accepted [PurchaseOrder](#) if a *Change Order* has been made.

**Note:** [xjdf:ContentCheckIntent](#) allows the *Print Buyer* to define the desired proofing and preflighting workflow for a specific print job.

References: [PurchaseOrder](#)

Flow: *Print Provider to Print Buyer*

Table 3.10: *ProofApprovalRequest* Element

NAME	DATA TYPE	DESCRIPTION
<i>ProofRequest</i> *	element	Each <i>ProofRequest</i> describes sets of items that are to be proofed.

### 3.8.1 ProofRequest

Referenced by: *ProofApprovalRequest*

Table 3.11: *ProofRequest* Element

NAME	DATA TYPE	DESCRIPTION
<i>JobIDRef</i> ?	string	Reference to the <i>@JobID</i> this proof corresponds to. If not specified, the <i>ProofRequest</i> refers to the job that was ordered by the <i>PurchaseOrder</i> that is referenced by <i>@BusinessRefID</i> .
<i>xjdf:ProofItem</i> *	element	Details of the items to be proofed. <i>xjdf:ProofItem</i> / <i>@ProofTarget</i> SHALL be used to reference the proof that is requested. See ▶ [XJDF 2.0].

## 3.9 ProofApprovalResponse

A *ProofApprovalResponse* is the response to a *ProofApprovalRequest*.

If a *Print Buyer* receives a *ProofApprovalRequest*, it SHALL send to the *Print Provider* a *ProofApprovalResponse* whose *@BusinessRefID* references the *ProofApprovalRequest* and contains the *Print Buyer*'s approval or rejection of a proof.

References: *ProofApprovalRequest*

Flow: *Print Buyer to Print Provider*

Table 3.12: *ProofApprovalResponse* Element

NAME	DATA TYPE	DESCRIPTION
<i>ProofResponse</i> *	element	Each <i>ProofResponse</i> describes sets of items that have been proofed.

### 3.9.1 ProofResponse

Referenced by: *ProofApprovalResponse*

Table 3.13: *ProofResponse* Element

NAME	DATA TYPE	DESCRIPTION
<i>JobIDRef</i>	string	Reference to the <i>@JobID</i> this proof corresponds to.
<i>xjdf:ApprovalDetails</i>	element	Describes the overall result of the approval. See ▶ [XJDF 2.0].
<i>xjdf:ProofItem</i>	element	Details of the items that have been proofed. <i>xjdf:ProofItem</i> / <i>@ProofTarget</i> SHALL be used to reference the proof that was requested. See ▶ [XJDF 2.0].

## 3.10 PurchaseOrder

The *Print Buyer* accepts a *Quote* of the *Quotation* for purchase of a *Print Product* by creating and sending a *PurchaseOrder* that references the *Quote*. However, a *PurchaseOrder* can also be the first *Business Object* in a *Negotiation Phase*, especially for a reorder of a previously produced *Print Product*.

References: N/A (*PurchaseOrder* can be the initiating transaction), *Confirmation*, *Quotation*

Flow: *Print Buyer to Print Provider*

Table 3.14: PurchaseOrder Element

NAME	DATA TYPE	DESCRIPTION
<i>Expires</i> ?	dateTime	Date/time when this <b>PurchaseOrder</b> becomes <i>Invalid</i> .
<i>QuoteID</i> ?	NMTOKEN	This <b>PurchaseOrder</b> selects the quote specified by <b>Request</b> [@BusinessID = "Q"]/ <b>Quotation/Quote</b> [@QuoteID = "q"], where "Q" = <b>Request</b> /@BusinessRefID and "q" = @QuoteID of this <b>PurchaseOrder</b> .
<i>ReorderID</i> ?	NMTOKENS	Whitespace separated unique @BusinessID values that refer to <b>PurchaseOrder PrintTalk</b> documents that are the basis for this (collected) re-order, if the re-order is the starting point.
<i>ReplaceID</i> ?	NMTOKEN	@ReplaceID contains the <b>Request</b> /@BusinessID of the original <b>PurchaseOrder</b> that this <b>PurchaseOrder</b> is intended to <i>Supersede</i> .
<i>ReturnAudits</i> ?	NMTOKENS	@ReturnAudits contains a list of tokens that match the @Name value of an <b>xjdf:ResourceSet</b> . The matching resource sets SHOULD be returned in a <b>ReturnJob</b> business object. Typical values include <b>xjdf:DeliveryParams</b> for delivery tracking information or <b>xjdf:QualityControlResult</b> for quality reporting.
<i>ReturnJDF</i> ?	boolean	If @ReturnJDF = "true", the <i>Print Provider</i> SHALL send to the <i>Print Buyer</i> a <b>ReturnJob</b> Business Object that has a completed <b>XJDF</b> including <b>xjdf:Audit</b> elements; otherwise, the <i>Print Provider</i> SHALL NOT send a <b>ReturnJob</b> .
<b>Pricing</b> ?	element	<b>Pricing</b> SHALL specify the binding price of the purchase order. <b>Note:</b> This price will typically originate from a web to print or similar e-commerce system.
<b>xjdf:Comment</b> ?	element	Human readable comments about this purchase order.
<b>xjdf:XJDF</b> *	element	Description of the <i>Print Products</i> . The <b>XJDF</b> elements MAY be used to specify very detailed <i>Print Products</i> , or they MAY also be used to describe the ordering of finished goods in catalog based environments. <b>Note:</b> Whereas multiple <b>xjdf:XJDF</b> in an <b>RFQ</b> or <b>Quote</b> specify multiple potential options, multiple <b>xjdf:XJDF</b> in a <b>PurchaseOrder</b> are an explicit request to purchase multiple items, e.g. when describing a shopping cart in a web to print application. See ▶ [XJDF 2.0].

### 3.11 Quotation

Usually a *Print Provider* creates a **Quotation** after receiving an **RFQ**.

If the *Print Provider* chooses to accept an **RFQ**, the *Print Provider* creates one or more **Quote** elements and sends them back to the *Print Buyer* in a **Quotation** element. Each **Quote** element represents one quote for the job.

A *Print Provider* sends a **Quotation** whose semantics vary depending on @BusinessRefID.

If a *Print Provider* receives an **RFQ** and chooses to provide a quote, it SHALL send a **Quotation** whose @BusinessRefID references the received **RFQ**.

**PurchaseOrder:** If a *Print Provider* chooses to initiate a *Change Order* for a *Confirmed* job, it SHALL send a **Quotation** whose @BusinessRefID references the **PurchaseOrder** for the *Confirmed* job. The *Print Buyer* selects a possible or necessary change to the *Print Product*.

A **Quotation** SHALL contain at least one **Quote** element. If the *Print Provider* offers multiple options, it SHALL specify a separate **Quote** element for each such option.

After the *Print Provider* has sent a **Quotation** and while it is pending, the *Print Provider* MAY send either

- a *Superseding Quotation* that replaces the *Pending* one.
- a **Cancellation** for the *Pending Quotation* after which the *Print Provider* MAY choose to send either a new **Quotation** or a **Confirmation** for some pending **PurchaseOrder**. A *Pending PurchaseOrder* exists only if the cancelled **Quotation** was in fact a *Re-Quote*.

When a *Print Buyer* receives a **Quotation**, the *Print Buyer* MAY

- accept the **Quotation** by sending a **PurchaseOrder** that references the **Quote** that the *Print Buyer* wishes to accept from the list of **Quote** elements in the **Quotation**.

**BUSINESS OBJECTS**

- decline the **Quotation** by either sending a **Refusal** or letting it expire. The *Print Buyer* MAY choose to create a new **RFQ** that requests a *Re-Quote*.
- defer a decision on the **Quotation** and send a new **RFQ** that requests a *Re-Quote*.

References: **Confirmation, PurchaseOrder, RFQ**

Flow: **Print Provider to Print Buyer**

Table 3.15: Quotation Element

NAME	DATA TYPE	DESCRIPTION
<i>Estimate</i>	boolean	For each <b>Quote</b> element inside this <b>Quotation</b> , the price SHALL be a binding amount if <i>@Estimate</i> = "false", otherwise, the <i>Print Buyer</i> SHALL treat the price as an estimate only.
<i>Expires</i>	dateTime	Date/time when this <b>Quotation</b> becomes <i>Invalid</i> .
<i>ReplaceID</i> ?	NMTOKEN	<i>@ReplaceID</i> equals the <b>Request</b> / <i>@BusinessID</i> of the <b>Quotation</b> that this <b>Quotation</b> is intended to supersede.
<b>Quote</b> +	element	Each <b>Quote</b> element SHALL describe a complete distinct variation of all <i>Print Products</i> quoted. A <b>Quote</b> SHALL NOT be a quote for an individual part or <i>Item</i> of the <i>Order</i> .
<i>xjdf:Comment</i> ?	element	Human readable comments about this quotation.

3.11.1 Quote

A **Quote** element describes a quote for a particular variation of a product or products.

Referenced by: **Quotation**

Table 3.16: Quote Element

NAME	DATA TYPE	DESCRIPTION
<i>QuoteID</i>	NMTOKEN	The unique identifier for this <b>Quote</b> element. <i>@QuoteID</i> SHALL be unique only in the context of a <b>Quotation</b> .
<i>ReplaceID</i> ?	NMTOKEN	<b>Quote</b> / <i>@QuoteID</i> of the <b>Quote</b> that this <b>Quote</b> <i>Supersedes</i> . Superseding is only allowed as long as the <b>Quote</b> to be <i>Superseded</i> is <i>Pending</i> .
<b>Pricing</b>	element	<b>Pricing</b> SHALL be used to indicate the list of price line items that are associated with this quote.
<i>xjdf:Comment</i> [ <i>@Type</i> = "JobDescription"] ?	element	Additional human readable comments about this quote.
<i>xjdf:Comment</i> [ <i>@Type</i> = "ptk:Deviation"] ?	element	If this <b>Quote</b> does not match the requirements of the <b>RFQ</b> , then this element SHALL contain a human readable description of the deviations. It SHOULD indicate the magnitude of the discrepancy at the beginning of the comment.
<i>xjdf:XJDF</i> *	element	<b>XJDF</b> representing the returned values that this <b>Quotation</b> has been made for. Potentially this MAY differ from the original <b>RFQ</b> , in which case details of any deviations and their magnitude SHALL be described in <b>xjdf:Comment</b> [ <i>@Type</i> ="ptk:Deviation"]. Multiple <b>xjdf:Comment</b> elements MAY be used to separate and clarify if there are multiple deviations. See ▶ [XJDF 2.0].

3.12 Refusal

A *Print Buyer* or a *Print Provider* sends a **Refusal** to decline receipt of a *Business Object*.

If a *Print Buyer* chooses to decline a **Quotation** sent by a *Print Provider*, or if a *Print Provider* chooses to decline either an **RFQ** or a **PurchaseOrder** sent by a *Print Buyer*, it SHALL either send a **Refusal** whose *@BusinessRefID* references the declined *Business Object* or let the *Business Object* expire.

References: **PurchaseOrder, Quotation, RFQ**



Flow: *Print Buyer to Print Provider, Print Provider to Print Buyer*

Table 3.17: Refusal Element

NAME	DATA TYPE	DESCRIPTION
<i>Reason</i>	enumeration	Machine readable general reason for declining the request. <b>Allowed values are:</b> <i>Busy</i> – No production resources are available to produce the request within the required deadline. <i>WrongProduct</i> – The printer is not capable of producing the requested type of product. <i>InvalidPrice</i> – The offered price is too low. <i>other</i> – Any other reason. If 'other' is specified @ <i>ReasonDetails</i> SHOULD be specified.
<i>ReasonDetails</i> ?	NMTOKENS	Additional details to describe the reason for refusal. <b>Values include:</b> <TBD WG> <i>WrongProduct</i> – Colors, finishing, paper, size etc. <i>Busy</i> – Weekend, waytoomany. <i>InvalidPrice</i> – NonStandard.
<i>xjdf:Comment</i> ?	element	Human readable comments about this refusal.

### 3.13 ReturnJob

The *Print Provider* MAY send to the *Print Buyer* a *ReturnJob* whose @*BusinessRefID* references the order's *PurchaseOrder*. The *ReturnJob*/*xjdf:XJDF* SHOULD contain an *xjdf:AuditPool* that contains *AuditResource* audits that provide additional information such as quality reports or delivery details. The list of requested resources MAY be provided in *PurchaseOrder*/*@ReturnAudits*.

References: *PurchaseOrder*

Flow: *Print Provider to Print Buyer*

Table 3.18: ReturnJob Element

NAME	DATA TYPE	DESCRIPTION
<i>xjdf:XJDF</i> *	element	The <b>XJDF</b> after processing including the audit information. This is the <b>Print-Talk</b> equivalent to <i>xjdf:CommandReturnQueueEntry</i> . See ▶ [XJDF 2.0].

### 3.14 RFQ

A *Print Buyer* sends an *RFQ* to a *Print Provider* to request a quote. Usually the *Negotiation Phase* starts with an *RFQ*. Sometimes, the *Negotiation Phase* starts with a *Quotation* or *PurchaseOrder*.

An *RFQ* SHALL convey the unambiguous intentions of the *Print Buyer* to the *Print Provider*. A complex *RFQ* MAY contain options that specify several types of acceptable materials or methods required by the *Print Buyer*. An *RFQ* MAY contain other options that require the *Print Provider*'s estimator to generate more than one quoted price in the response.

A *Print Buyer* sends an *RFQ* whose semantics vary depending on @*BusinessRefID*.

- **Not specified:** If a *Print Buyer* chooses to initiate a new product process by making a request-for-quote to a *Print Provider*, it SHALL send an *RFQ* with no @*BusinessRefID*.
- **Quotation:** If a *Print Buyer* receives a *Quotation* for a job and wants a *Re-Quote* for a variation of the job, it SHALL send an *RFQ* whose @*BusinessRefID* references the received *Quotation*.
- **Confirmation:** If a *Print Buyer* wants to initiate a *Change Order* for a *Confirmed Job* and the *PurchaseOrder* form of a *Change Order* cannot be used because there are changes that don't have quotes, the *Print Buyer* SHALL send an *RFQ* whose @*BusinessRefID* references the *Confirmation* for the *Confirmed Job*. A *Change Order RFQ* asks what the consequences would be for a certain change of the *Print Product*. See *PurchaseOrder* for an alternate *Change Order* that a *Print Buyer* can send.

After the *Print Buyer* has sent an *RFQ* and while it is *Pending*, the *Print Buyer* MAY send one of the following

- a *Superseding RFQ* that replaces the *Pending* one.
- an unrelated *RFQ*.

**BUSINESS OBJECTS**

- a **Cancellation** for the *Pending RFQ* after which the *Print Buyer* MAY choose to continue the negotiation process by sending either a new **RFQ** or a new **PurchaseOrder** for a *Pending Quotation*. A *Pending Quotation* exists only if the cancelled **RFQ** was in fact a **Request** for Re-Quote.

When a *Print Provider* receives an **RFQ**, the *Print Provider* SHALL either

- accept the **RFQ** by sending a **Quotation** to the *Print Buyer*.
- decline the **RFQ** by either sending a **Refusal** to the *Print Buyer* or letting the **RFQ** expire.

References: N/A (**RFQ** can be the initiating transaction), **Confirmation**, **PurchaseOrder**, **Quotation**

Flow: *Print Buyer to Print Provider*

Table 3.19: RFQ Element

NAME	DATA TYPE	DESCRIPTION
<i>Estimate</i> ?	boolean	If "false", the <i>Print Provider</i> SHALL provide prices in the responding <b>Quotation</b> that will be binding and not altered in any subsequent <b>Invoice</b> that is raised as a result of this <b>Quotation</b> . If not "false", the <i>Print Provider</i> SHOULD provide prices in the responding <b>Quotation</b> that are estimates; consequently the prices in any subsequent <b>Invoice</b> may vary from those in the <b>Quotation</b> . However, the <i>Print Provider</i> MAY provide prices that are binding. In all cases the <i>Print Provider</i> SHALL clearly indicate whether the responding <b>Quotation</b> is a binding amount or an estimate in <b>Quotation</b> / <i>@Estimate</i> .
<i>Expires</i>	dateTime	Date/time when this <b>RFQ</b> becomes <i>Invalid</i> .
<i>ReorderID</i> ?	NMTOKENS	Whitespace separated <i>@BusinessID</i> values that refer to <b>PurchaseOrder Print-Talk</b> documents that are the basis for this (collected) <b>RFQ</b> . The <b>RFQ</b> is intended to lead to a re-order.
<i>ReplaceID</i> ?	NMTOKEN	<i>@ReplaceID</i> contains the <b>Request</b> / <i>@BusinessID</i> of the original <b>RFQ</b> <i>Business Object</i> that this <b>RFQ</b> is intended to <i>Supersede</i> .
<i>xjdf:Comment</i> ?	element	Human readable comments about this request for quote.
<i>xjdf:XJDF</i> *	element	Description of the products or services that are to be produced or delivered. <b>Note:</b> A <i>Product</i> description is typically used in a <i>Print Buyer to Print Provider</i> environment, whereas a <i>Gray Box</i> or individual <i>Process</i> is typically used in a subcontracting environment. See ▶ [XJDF 2.0].

### 3.15 StockLevelRequest

A **StockLevelRequest** allows the *Print Buyer* to query the *Print Provider* for the available stock levels of pre-printed or non-printed items.

References: N/A (**StockLevelRequest** can be the initiating transaction), **StockLevelResponse**

Flow: *Print Buyer to Print Provider*

Table 3.20: StockLevelRequest Element (Sheet 1 of 2)

NAME	DATA TYPE	DESCRIPTION
<i>Availability</i> ?	enumerations	<i>@Availability</i> SHALL specify a list of availabilities for the items whose stock levels are being requested. <b>Allowed values are from:</b> ▶ Table 3.21 Availability Attribute Values.
<i>Currency</i> ?	NMTOKEN	Three digit currency definition, see ▶ [ISO4217:2001], e.g., USD, EUR, GBP. The value of <i>@Currency</i> identifies the currency that the <i>Print Provider</i> SHALL use in the responding <b>StockLevelResponse</b> .
<i>DisplayPrice</i> ?	boolean	If true then the response SHALL include a <b>StockLevel/Pricing</b> element and all <b>StockLevel/Pricing/Price</b> elements SHALL have a value in the <i>@Price</i> attribute.

Table 3.20: StockLevelRequest Element (Sheet 2 of 2)

NAME	DATA TYPE	DESCRIPTION
<i>ExternalID</i> ?	regexp	Regular expression that filters the returned list of <b>StockLevel</b> elements to only include elements whose <b>StockLevel</b> / <i>@ExternalID</i> matches <i>@ExternalID</i> . If <i>@ExternalID</i> is not specified, <b>StockLevel</b> elements SHALL be returned for all products.

Table 3.21: Availability Attribute Values

VALUE	DESCRIPTION
Available	Defines stocked items that are currently available. <b>StockLevel</b> / <i>@Amount</i> SHALL show the number of items currently available. <b>StockLevel</b> / <i>@ProductionDuration</i> SHALL NOT be specified.
Deliverable	Defines stocked items that are currently not available, but are expected to be available at some future time. <b>StockLevel</b> / <i>@Amount</i> SHALL show the amount and <b>StockLevel</b> / <i>@ProductionDuration</i> SHALL show when the items are expected to be available.
Undeliverable	Defines either stocked items that are out of stock and for whom no future availability can be estimated, or items that are no longer stocked and may never be available. <b>StockLevel</b> / <i>@Amount</i> and <b>StockLevel</b> / <i>@ProductionDuration</i> SHALL NOT be specified.

### 3.16 StockLevelResponse

A **StockLevelResponse** is the response to a **StockLevelRequest**.

If a *Print Provider* receives a **StockLevelRequest**, it SHALL send to the *Print Buyer* a **StockLevelResponse** whose *@BusinessRefID* references the **StockLevelRequest**.

References: **StockLevelRequest**

Flow: *Print Provider to Print Buyer*

Table 3.22: StockLevelResponse Element

NAME	DATA TYPE	DESCRIPTION
<b>StockLevel</b> *	element	Level of available stock.

#### 3.16.1 StockLevel

Referenced by: **StockLevelResponse**

Table 3.23: StockLevel Element (Sheet 1 of 2)

NAME	DATA TYPE	DESCRIPTION
<i>Amount</i>	integer	Number of items that are currently available or will be available within the time defined by <i>@ProductionDuration</i> .
<i>Availability</i>	enumeration	<i>@Availability</i> SHALL specify the availability of the item. <b>Allowed values are from:</b> ▶ Table 3.21 Availability Attribute Values.
<i>DescriptiveName</i>	string	Human-readable descriptive name of the item that this <b>StockLevel</b> relates to. <i>@DescriptiveName</i> SHALL be provided to allow the item to be successfully identified.
<i>ExternalID</i>	NMTOKEN	The <i>xjdf:Product</i> / <i>@ExternalID</i> of the respective item.
<i>LotID</i> ?	NMTOKEN	Production lot of this item. Used to separate available stock with different pricing based on production lots.
<i>ProductionDuration</i> ?	duration	Estimated time until item will be available. <b>Note:</b> <i>@ProductionDuration</i> excludes shipping times to the recipient.

Table 3.23: StockLevel Element (Sheet 2 of 2)

NAME	DATA TYPE	DESCRIPTION
<i>Pricing</i> ?	element	List of <i>Price</i> definitions for the item specified by this <i>StockLevel</i> . Multiple <i>Price</i> elements in this <i>Pricing</i> element specify the price for orders with an order amount greater than or equal to <i>Price/@Amount</i> . <i>Price/@DescriptiveName</i> SHALL be identical for all <i>Pricing/Price</i> elements in the scope of one <i>StockLevel</i> .
<i>xjdf:Contact</i> ?	element	If present, <i>xjdf:Contact</i> SHALL specify the location of the item in stock. Both <i>xjdf:Contact/xjdf:Company</i> and <i>xjdf:Contact/xjdf:Address</i> SHOULD be specified.
<i>xjdf:XJDF</i> ?	element	Detailed description of the item that is defined by this <i>StockLevel</i> .

# 4 Subelements

The elements in this chapter are subelements that are used as children of other elements or *Business Objects*.

## 4.1 Additional

Referenced by: [Price](#)

Table 4.1: Additional Element

NAME	DATA TYPE	DESCRIPTION
<a href="#">Amount</a>	double	The additional number of <i>Items</i> that <a href="#">@Price</a> refers to.
<a href="#">Price</a>	double	The price of the additional number of <i>Items</i> as specified in <a href="#">@Amount</a> .

## 4.2 Payment

[Payment](#) contains additional details about a payment.

Referenced by: [Pricing](#)

Table 4.2: Payment Element (Sheet 1 of 2)

NAME	DATA TYPE	DESCRIPTION
<a href="#">Authorization</a> ?	string	Authorization code for this <i>Business Object</i> .
<a href="#">AuthorizationExpires</a> ?	dateTime	Expiration date of the <a href="#">@Authorization</a> .
<a href="#">Expires</a> ?	dateTime	<p><a href="#">@Expires</a> contains a future date regarding the <a href="#">@PaymentType</a>.</p> <p>For payment types that require an expiry date as part of the payment validation, e.g. "<a href="#">CreditCard</a>", "<a href="#">DebitCard</a>", <a href="#">@Expires</a> SHALL contain the expiry date.</p> <p><b>Note:</b> How the value from <a href="#">@Expires</a> is used to formulate an expiry date for presentation to the validation system is implementation dependent, e.g. MM/YY.</p> <p>For payment types that involve a transfer, e.g. "<a href="#">BankTransfer</a>", "<a href="#">DigitalCurrency</a>", <a href="#">@Expires</a> MAY be used to define when the sending system will cease attempting to make the payment should it be rejected for any reason.</p> <p>For ongoing payment types, e.g. "<a href="#">Contract</a>", <a href="#">@Expires</a> MAY be used to indicate when the ongoing arrangement expires.</p> <p>For other payment types the use of <a href="#">@Expires</a> is implementation dependent.</p>
<a href="#">IsPaid</a> ?	boolean	If <a href="#">@IsPaid</a> is " <a href="#">true</a> ", the payment transaction has been finalized and no further payment is due. If <a href="#">@IsPaid</a> is " <a href="#">false</a> ", then there remain outstanding payments due. <a href="#">@IsPaid</a> SHALL NOT be provided in the context of a quotation.
<a href="#">Number</a> ?	NMTOKEN	Credit card number. The format is specified without blanks or any other separator characters.

Table 4.2: Payment Element (Sheet 2 of 2)

NAME	DATA TYPE	DESCRIPTION
<i>PaymentType</i>	enumeration	<p>If <i>@IsPaid</i> is "true", <i>@PaymentType</i> SHALL specify the method of payment. If <i>@IsPaid</i> is "false", <i>@PaymentType</i> SHALL specify an acceptable payment type. Additional details SHOULD be provided in <i>@PaymentTypeDetails</i>.</p> <p><b>Allowed values are:</b></p> <p><b>BankTransfer</b> - A bank transaction such as a SEPA payment.</p> <p><b>Contract</b> - A general negotiated contract between <i>Print Buyer</i> and <i>Print Provider</i>. The contract SHOULD be identified in <i>@PaymentTypeDetails</i>.</p> <p><b>CreditCard</b> - A credit card. The credit card type SHOULD be identified in <i>@PaymentTypeDetails</i>.</p> <p><b>DebitCard</b> - A debit card. The debit card type SHOULD be identified in <i>@PaymentTypeDetails</i>.</p> <p><b>DigitalCurrency</b> - A digital currency. The currency type SHOULD be identified in <i>@PaymentTypeDetails</i>.</p> <p><b>Invoice</b> - An invoice that is provided with or after delivery. Invoice SHALL NOT be specified in the context of an <b>Invoice</b>.</p> <p><b>Other</b> - Any payment type that cannot be described by one of the other values in this list. If <i>@PaymentType="Other"</i>, <i>@PaymentTypeDetails</i> SHALL be specified.</p> <p><b>PaymentProvider</b> - An Internet payment provider. The payment provider brand SHOULD be identified in <i>@PaymentTypeDetails</i>.</p>
<i>PaymentTypeDetails</i> ?	string	Additional details of the payment type such as provider brand.
<i>xjdf:Comment</i> [ <i>@Type="ptk:PaymentTerms"</i> ] ?	element	Human readable text that SHALL specify the terms and conditions of the payment.
<i>xjdf:Contact</i> ?	element	Contact details of the person such as the credit card holder or bank account holder that this <b>Payment</b> refers to.
<i>xjdf:GeneralID</i> *	element	Additional identifiers related to the <b>Payment</b> .

#### 4.2.1 xjdf:GeneralID - Payment

This section specifies particular values for *xjdf:GeneralID/@IDUsage* in the context of **Payment**.

Referenced by: **Payment**

Table 4.3: xjdf:GeneralID Element (For use with Payment)

NAME	DATA TYPE	DESCRIPTION
<i>IDUsage</i>	NMTOKEN	<p><b>Values include:</b></p> <p><b>Bank</b> - The name of the bank.</p> <p><b>BankAccount</b> - The local bank account number.</p> <p><b>BIC</b> - The SWIFT bank identifier code.</p> <p><b>IBAN</b> - The international bank account number.</p>
<i>IDValue</i>	string	See ▶ [XJDF 2.0].

#### 4.3 Price

The **Price** element specifies the price of a line *Item* which includes the price, a description of the line *Item* and additional metadata.

Referenced by: **Pricing**

Table 4.4: Price Element (Sheet 1 of 2)

NAME	DATA TYPE	DESCRIPTION
<i>Amount</i> ?	double	Amount of items that this <b>Price</b> refers to. If <i>@UnitPrice</i> is specified, <i>@Amount</i> SHALL be specified.

Table 4.4: Price Element (Sheet 2 of 2)

NAME	DATA TYPE	DESCRIPTION
<i>DescriptiveName</i>	string	The description of the <i>Item</i> .
<i>DropID</i> ?	NMTOKEN	@ <i>DropID</i> SHALL reference the delivery that this <i>Price</i> applies to and SHALL match <i>xjdf:ResourceSet</i> [@Name="DeliveryParams"]/ <i>xjdf:Resource</i> / <i>xjdf:Part</i> / <i>@DropID</i> from the <b>XJDF</b> .
<i>ItemRefs</i> ?	NMTOKENS	Each value in @ <i>ItemRefs</i> SHALL refer to an <i>xjdf:Product</i> / <i>@ExternalID</i> within an associated <i>xjdf:XJDF</i> of the <i>Business Object</i> that this <i>Price</i> relates to.
<i>LineID</i> ?	ID	The unique identifier for the line item that this <i>Price</i> represents.
<i>LineIDRefs</i> ?	IDREFS	References to <i>Price</i> / <i>@LineID</i> of the line items that have been added to calculate @ <i>Price</i> . <i>Price</i> elements that have been referenced by @ <i>LineIDRefs</i> SHALL be ignored when searching for the total price. <b>Note:</b> Due to differing tax regulations for private and business transactions, there can be multiple total values. <b>Note:</b> Due to rounding, @ <i>Price</i> may vary from the sum of @ <i>Price</i> values of each of the referenced <i>Price</i> elements in @ <i>LineIDRefs</i> .
<i>Price</i>	double	@ <i>Price</i> SHALL specify the price of the entire amount as specified by @ <i>Amount</i> of the line item.
<i>PriceType</i>	enumeration	@ <i>PriceType</i> SHALL specify the machine readable type of the price. <b>Allowed values are:</b> <b>Discount</b> - Discount prices SHALL be negative. <b>DownPayment</b> - The amount that SHALL be paid up front. Production will not commence before this amount is received by the <i>Print Provider</i> . <b>Handling</b> - This price relates to handling charges. If shipping and handling are combined in one line item the value " <b>Shipping</b> " SHOULD be used. <b>Markup</b> - This refers to additional charges that have been incurred. Markup prices SHALL be positive. <b>Other</b> - Any price type not covered by other values in this list. <b>Prepaid</b> - The amount has already been paid and SHALL be deducted from the total. Prepaid prices SHALL be negative. <b>Product</b> - The requested products. If @ <i>PriceType</i> = " <b>Product</b> ", then @ <i>ItemRefs</i> SHOULD reference the products that this <i>Price</i> applies to. <b>Shipping</b> - This price relates to shipping charges. <b>Subtotal</b> - This refers to a partial sum of other prices. The value is for information only and SHOULD NOT be used to calculate the total price. <b>Total</b> - Total.
<i>TaxType</i>	enumeration	@ <i>TaxType</i> SHALL specify the taxation of the <i>Price</i> . <b>Allowed values are:</b> <b>Gross</b> - The price includes taxes. <b>Net</b> - The price excludes taxes. <b>Tax</b> - The price is only the tax. <b>Note:</b> The " <b>Gross</b> " price MAY differ from the sum of " <b>Net</b> " price and " <b>Tax</b> " due to rounding.
<i>UnitPrice</i> ?	double	Price for one unit of the <i>Item</i> , i.e. the @ <i>Price</i> of the <i>Item</i> if @ <i>Amount</i> = "1".
<i>Additional</i> *	element	Price for orders in excess of the nominal delivery quantity specified in @ <i>Amount</i> . <i>Additional</i> SHALL NOT be specified in an <i>Invoice</i> .

#### 4.4 Pricing

**Pricing** SHALL specify a list of *Price* elements, each of which in turn specifies the price for a single line item.

**Note:** The usage of **Pricing** depends upon its parent *Business Object* and is clarified for each occurrence.

Referenced by: **Invoice, PurchaseOrder, Quote, StockLevel**

Table 4.5: Pricing Element

NAME	DATA TYPE	DESCRIPTION
<i>Currency</i>	NMTOKEN	Three digit currency definition, see ▶ [ISO4217:2001]. @ <i>Currency</i> SHALL identify the currency of all <i>Price</i> / <i>@Price</i> values.
<i>Payment</i> *	element	Details of the method of payment. Multiple <i>Payment</i> elements SHALL specify multiple payment options. At most one <i>Payment</i> element SHALL be specified in the context of a purchase order. If <i>Payment</i> / <i>@IsPaid="true"</i> , exactly one <i>Payment</i> element SHALL be specified. <i>Payment</i> SHALL be unique and specify the selected methods of payment in the context of a <i>PurchaseOrder</i> and SHALL specify the list of allowed methods of payments in all other contexts.
<i>Price</i> +	element	Each <i>Price</i> element represents the price for a single <i>Item</i> or service.



# 5 Building a System

For a *Print Buyer* and a *Print Provider* to negotiate a contract for a *Print Product*, they SHALL exchange one or more of the following *Business Objects*: **RFQ**, **Quotation**, **PurchaseOrder**, **Confirmation**, **Cancellation** and **Refusal**.

After a contract has been consummated, either a *Print Buyer* or a *Print Provider* MAY initiate a *Change Order*. The negotiation of the *Change Order* is performed with the same *Business Objects* as the initial negotiation – **RFQ**, **Quotation**, **PurchaseOrder**, **Confirmation**, **Cancellation** and **Refusal**. The contract, which both parties have agreed on during previous negotiations, is valid during the whole *Change Order* process. However the *Print Provider* may halt production of the *Print Product*. The old contract is replaced only if there is a new agreement on a *Change Order* (expressed by the new **Confirmation** sent by the *Print Provider*). If the *Change Order* process terminates with a **Refusal** of a *Business Object*, an expired *Business Object*, or **Cancellation** of a *Business Object*, the *Change Order* process fails and production continues as originally planned before the *Change Order* was proposed.

During the *Production Phase*, interactions other than *Change Orders* can take place between the *Print Buyer* and *Print Provider*. The *Print Buyer* MAY send one or more **OrderStatusRequest** elements and receive an **OrderStatusResponse** from each request. The *Print Provider* MAY send unsolicited **OrderStatusResponse** elements. The *Print Provider* MAY send one or more **ProofApprovalRequest** elements and receive a **ProofApprovalResponse** from each request.

Either the *Print Buyer* or the *Print Provider* MAY send a **Cancellation** for the job during the *Production Phase*, which generally leads to a final **Invoice** that conforms to the *Print Provider*'s terms and conditions.

The *Print Provider* MAY send **Invoice** elements to the *Print Buyer* after delivery of the *Print Product* as well as at various milestones.

After the *Production Phase* is finished, the *Print Provider* MAY send back information about the produced job using a **ReturnJob** element.

## 5.1 System Requirements

A system that uses **PrintTalk** will typically be deployed over the internet and therefore security and authentication need to be addressed. Since **PrintTalk** can contain sensitive data, it is strongly encouraged to use encryption technology whenever possible.

### 5.1.1 Transport protocol

**PrintTalk** SHALL be implemented using the request-response model using HTTP.

If no error occurred then the synchronous protocol response SHALL be an empty HTTP response with an HTTP status code of 200. If an error occurred then the HTTP status code SHALL be present and SHALL NOT be 200, and the HTTP body MAY be non-empty, e.g. with a human readable text or html representation of the error.

The one-way protocol defined in cXML 3.1.10 One-Way (Asynchronous) Model MAY be implemented as a secondary protocol, e.g. using hot-folders or email attachments.

### 5.1.2 Authentication

Whereas encryption allows for secure communication in the internet by hiding the contents of transactions from third parties, authentication is used to verify that the sender of a message is actually the entity that it claims to be. Authentication is therefore extremely important when fulfilling contracts in order to prevent fraud and misuse of the interface. It is strongly encouraged to only allow access to authenticated clients. If authentication is implemented, it SHOULD follow the directions shown in ▶ [RFC6750]. All implementations SHOULD support at least section "2.1 Authorization Request Header Field" from ▶ [RFC6750].

▶ [RFC6750] provides methods to verify the identity of a message sender. **PrintTalk** defines no proprietary authentication methods but it is emphasized that authentication is important in all business transactions.

The initial exchange of the token and renewal, as well as the format of the token is not part of this specification and is implementation dependent.

### 5.1.3 PrintTalk Packaging

Additional assets such as PDF files or images MAY be provided in a **PrintTalk** transaction. These assets can be referenced in the web as URLs or can be provided in a single ZIP package that also contains the **PrintTalk**. In this case the ZIP package consists of a single **PrintTalk** transaction and the digital assets to which the transaction refers.

### 5.1.3.1 MIME Types and File Extensions

The following MIME types and extensions SHOULD be used when storing **PrintTalk** as a file or when a MIME type is required, e.g. when setting the http Content-Type header.

*Table 5.1: MIME Types and File Extensions*

MIME TYPE	EXTENSION	USAGE
application/ vnd.cip4-ptk+xml	ptk	Unpackaged <b>PrintTalk</b> .
application/ vnd.cip4-ptk+zip	ptk.zip	Zip packaged <b>PrintTalk</b> . A double extension of .ptk.zip SHOULD be used.

### 5.1.3.2 ZIP Packaging

Zip is a de facto industry standard for packaging and compressing data. Directory structures can be encoded in a zip package. For details see ▶ [ZIP].

#### 5.1.3.2.1 Identifying the PrintTalk transaction

The **PrintTalk** transaction SHALL be named PrintTalk.ptk and SHALL reside in the root directory of the zip package.

#### 5.1.3.2.2 Referencing Digital Assets within a ZIP Package

Referenced digital assets that reside in the zip package, for instance those that are referenced with @URL, SHALL be referenced as local URLs. The base URL for calculating local URLs SHALL be the root of the zip package.

Digital assets other than the PrintTalk.ptk MAY be placed in a directory tree structure within the zip file.

#### 5.1.3.2.3 ZIP File Name Encoding

All file and directory names in a zip package SHALL be encoded in UTF-8.

**Note:** Zip allows any encoding but provides no method to declare the encoding.

# A Workflow Diagrams

The **PrintTalk** workflow is described in the following diagrams:

- ▶ Figure A-1: Simplified Workflow, representative of web-based catalog ordering.
- ▶ Figure A-2: Proof Cycle.
- ▶ Figure A-3: Status Request Cycle.
- ▶ Figure A-4: Change Order Management.

**Note:** The diagrams contain the following abbreviations:

- PB Print Buyer.
- PP Print Provider.
- PO Purchase Order

**Figure A-1: Simplified Workflow**

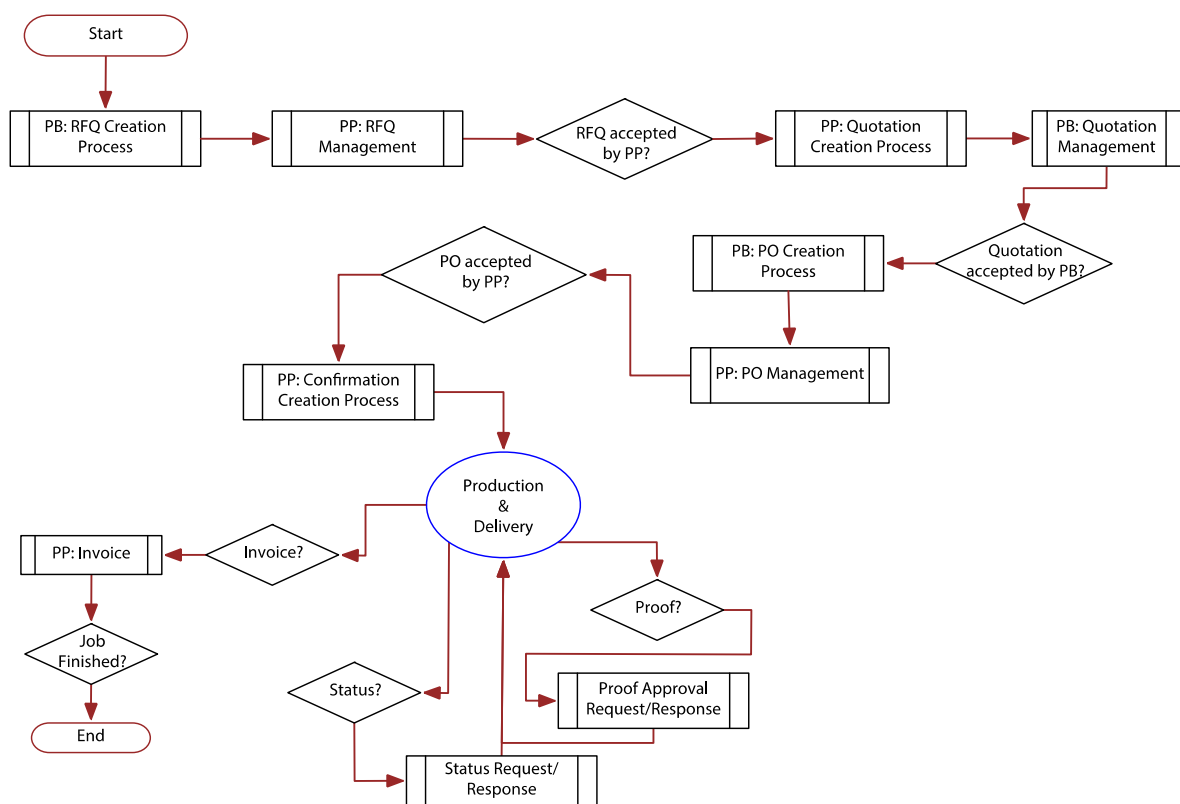


Figure A-2: Proof Cycle

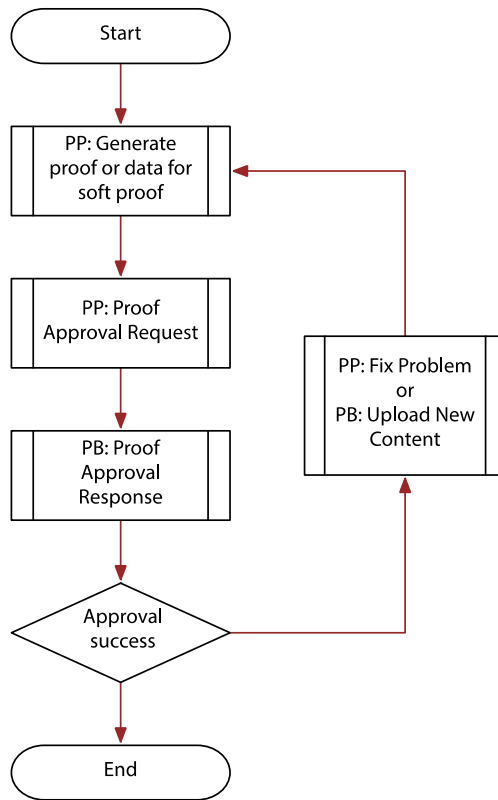


Figure A-3: Status Request Cycle

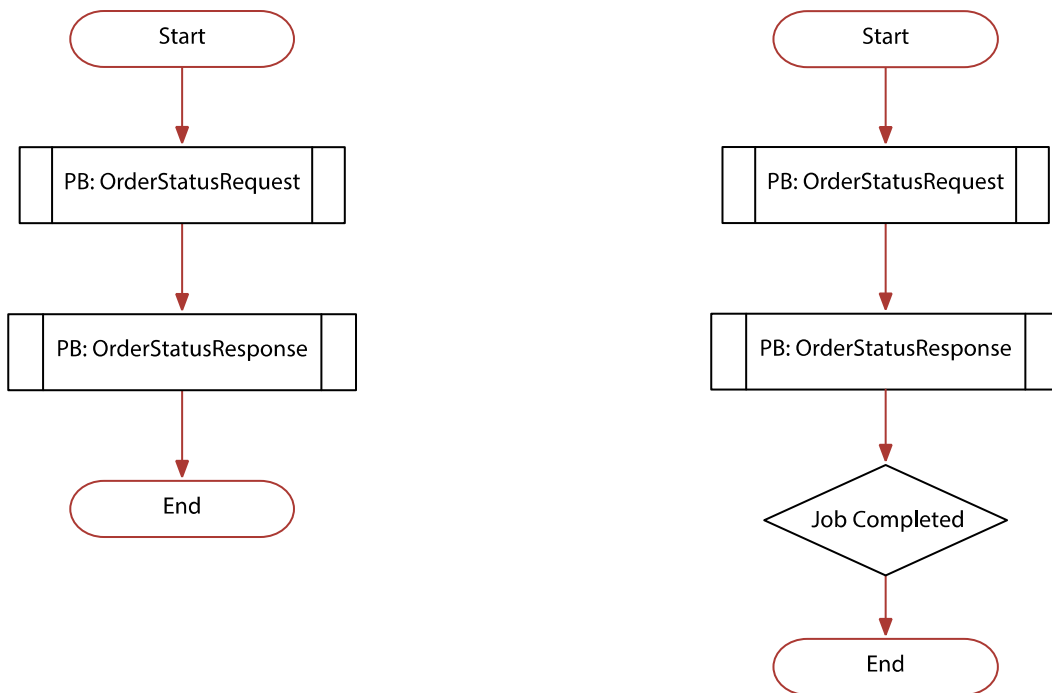
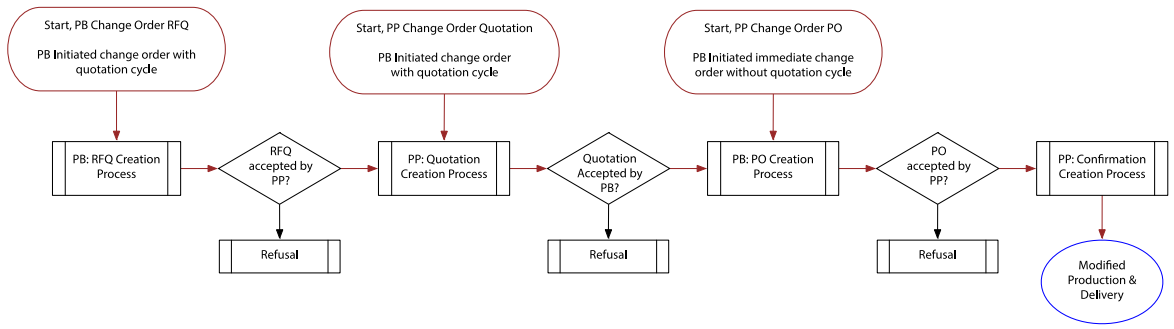


Figure A-4: Change Order Management





# B Usage of PrintTalk IDs

This section illustrates the semantics and usage of the various IDs in typical workflow scenarios.

## B.1 BusinessID and BusinessRefID

This section illustrates the use of the `@BusinessID` and `@BusinessRefID`. The `@BusinessRefID` references a *Business Object* that originates from the other side of the workflow. Thus, a *Business Object* that originates from the *Print Buyer* references a *Business Object* that originates from the *Print Provider* and vice versa. Once a **Confirmation** has been placed, **PurchaseOrder**/`@BusinessID` SHALL be used as the `@BusinessRefID` of all following *Business Objects*.

### B.1.1 Simple Negotiation

#### B.1.1.1 Print Buyer sends RFQ

```
<Request BusinessID="RFQ_1">
  <RFQ/>
</Request>
```

#### B.1.1.2 Print Provider sends Quotation referencing RFQ "RFQ\_1"

```
<Request BusinessID="Quotation_1" BusinessRefID="RFQ_1">
  <Quotation>
    <Quote QuoteID="Quote_1"/>
    <Quote QuoteID="Quote_2"/>
  </Quotation>
</Request>
```

#### B.1.1.3 Print Buyer sends PurchaseOrder referencing Quote "Quote\_1"

```
<Request BusinessID="Quotation_1" BusinessRefID="Quotation_1">
  <PurchaseOrder QuoteID="Quote_1"/>
</Request>
```

#### B.1.1.4 Print Provider sends Confirmation referencing PurchaseOrder "PO\_1"

```
<?xml version="1.0" encoding="UTF-8"?>
<!--TBD Placeholder -->

  <Confirmation BusinessID="Confirmation_1" BusinessRefID="PO_1"/>
```

### B.1.2 Change Order Initiated by Print Buyer and Starting with RFQ

#### B.1.2.1 Print Buyer sends Change Order RFQ referencing earlier "Confirmation\_1"

```
<?xml version="1.0" encoding="UTF-8"?>
<!--TBD Placeholder -->

  <RFQ BusinessID="CO_RFQ" BusinessRefID="Confirmation_1">
```

### B.1.2.2 Print Provider sends Change Order **Quotation** referencing "CO\_RFQ"

```
<?xml version="1.0" encoding="UTF-8"?>
<!--TBD Placeholder -->

    <Quotation BusinessID="Quotation_4" BusinessRefID="CO_RFQ">
        <Quote QuoteID ="Quote_1"/>
        <Quote QuoteID ="Quote_2"/>
    </Quotation>
```

### B.1.2.3 Print Buyer sends Change Order **PurchaseOrder** referencing "Quote\_1"

```
<?xml version="1.0" encoding="UTF-8"?>
<!--TBD Placeholder -->

    <PurchaseOrder BusinessID="PO_3" BusinessRefID="Quotation_4" QuoteID="Quote_1">
```

### B.1.2.4 Print Provider sends Change Order **Confirmation** referencing "PO\_3"

```
<?xml version="1.0" encoding="UTF-8"?>
<!--TBD Placeholder -->

    <Confirmation BusinessID="Confirmation_2" BusinessRefID="PO_3">
```

## B.1.3 Change Order Initiated by Print Buyer and Starting with PurchaseOrder

### B.1.3.1 Print Buyer sends Change Order **PurchaseOrder** referencing earlier "Confirmation\_1"

```
<?xml version="1.0" encoding="UTF-8"?>
<!--TBD Placeholder -->

    <PurchaseOrder BusinessID="PO_4" BusinessRefID="Confirmation_1" QuoteID="Quote_2">
```

### B.1.3.2 Print Provider sends Change Order **Confirmation** referencing "PO\_4"

```
<?xml version="1.0" encoding="UTF-8"?>
<!--TBD Placeholder -->

    <Confirmation BusinessID="Confirmation_3" BusinessRefID="PO_4">
```

## B.1.4 Change Order Initiated by Print Provider and Starting with Quotation

### B.1.4.1 Print Provider sends Change Order **Quotation** referencing earlier "PO\_1"

```
<?xml version="1.0" encoding="UTF-8"?>
<!--TBD Placeholder -->

    <Quotation BusinessID="Quotation_5" BusinessRefID="PO_1">
        <Quote QuoteID ="Quote_1"/>
        <Quote QuoteID ="Quote_2"/>
    </Quotation>
```



B.1.4.2 Print Buyer sends Change Order **PurchaseOrder** referencing "Quote\_2"

```
<?xml version="1.0" encoding="UTF-8"?>
<!--TBD Placeholder -->

    <PurchaseOrder BusinessID="PO_5" BusinessRefID="Quotation_5" QuoteID="Quote_2">
```

B.1.4.3 Print Provider sends Change Order **Confirmation** referencing "PO\_5"

```
<?xml version="1.0" encoding="UTF-8"?>
<!--TBD Placeholder -->

    <Confirmation BusinessID="Confirmation_4" BusinessRefID="PO_5">
```

## B.1.5 Complex Negotiation

B.1.5.1 Print Buyer sends **RFQ**

```
<?xml version="1.0" encoding="UTF-8"?>
<!--TBD Placeholder -->

    <RFQ BusinessID="RFQ_1">
```

B.1.5.2 Print Provider sends **Quotation** referencing **RFQ** "RFQ\_1"

```
<?xml version="1.0" encoding="UTF-8"?>
<!--TBD Placeholder -->

    <Quotation BusinessID="Quotation_1" BusinessRefID="RFQ_1">
        <Quote QuoteID="Quote_1"/>
        <Quote QuoteID="Quote_2"/>
    </Quotation>
```

B.1.5.3 Print Buyer sends an **RFQ** for a Re-**Quote** referencing "Quotation\_1".

```
<?xml version="1.0" encoding="UTF-8"?>
<!--TBD Placeholder -->

    <RFQ BusinessID="RFQ_2" BusinessRefID="Quotation_1">
```

B.1.5.4 Print Provider sends **Quotation** for Re-**Quote** referencing "RFQ\_2"

```
<?xml version="1.0" encoding="UTF-8"?>
<!--TBD Placeholder -->

    <Quotation BusinessID="Quotation_2" BusinessRefID="RFQ_2" ReplaceID="Quotation_1">
        <Quote QuoteID="Quote_1" ReplaceID="Quote_1" >
    </Quotation>
```

B.1.5.5 *Print Buyer* sends **PurchaseOrder** referencing "Quote\_1".

```
<?xml version="1.0" encoding="UTF-8"?>
<!--TBD Placeholder -->

    <PurchaseOrder BusinessID="PO_6" BusinessRefID="Quotation_2" QuoteID="Quote_1">
```

B.1.5.6 *Print Provider* sends **Confirmation** referencing "PO\_6".

```
<?xml version="1.0" encoding="UTF-8"?>
<!--TBD Placeholder -->

    <Confirmation BusinessID="Confirmation_6" BusinessRefID="PO_6">
```

## B.2 ReplaceID

This section illustrates the use of **@ReplaceID**. A *Print Buyer* or *Print Provider* uses **@ReplaceID** to *Supersede* a previously sent *Business Object* that has not been answered yet by the counter party.

### B.2.1 Print Buyer Supersedes RFQ

B.2.1.1 The *Print Buyer* sends an original **RFQ** identified by "RFQ\_1"

```
<?xml version="1.0" encoding="UTF-8"?>
<!--TBD Placeholder -->

    <RFQ BusinessID="RFQ_1">
```

B.2.1.2 The *Print Buyer* send a superseding **RFQ** by referencing **RFQ** "RFQ\_1"

```
<?xml version="1.0" encoding="UTF-8"?>
<!--TBD Placeholder -->

    <RFQ BusinessID="RFQ_2" ReplaceID="RFQ_1">
```

### B.2.2 Print Buyer Supersedes PurchaseOrder

B.2.2.1 The *Print Buyer* sends an original **PurchaseOrder** identified by "PO\_1"

```
<?xml version="1.0" encoding="UTF-8"?>
<!--TBD Placeholder -->

    <PurchaseOrder BusinessID="PO_1" BusinessRefID="Quotation_1" QuoteID="Quote_1">
```

B.2.2.2 The *Print Buyer* send a superseding **PurchaseOrder** by referencing **PurchaseOrder** "PO\_1"

```
<?xml version="1.0" encoding="UTF-8"?>
<!--TBD Placeholder -->

    <PurchaseOrder BusinessID="PO_2" BusinessRefID="PO_1" ReplaceID="PO_1" QuoteID="Quote_2">
```

### B.2.3 Print Provider Supersedes Quotation

The *Print Provider* has replaced "Quotation\_1" which had two **Quote** elements. The new "Quotation\_2" retains ONLY the **Quote**[@Quote\_ID="Quote\_1"].

#### B.2.3.1 Print Provider sends an original **Quotation** identified "Quotation\_1"

```
<?xml version="1.0" encoding="UTF-8"?>
<!--TBD Placeholder -->

    <Quotation BusinessID="Quotation_1" BusinessRefID="RFQ_1">
        <Quote QuoteID ="Quote_1"/>
        <Quote QuoteID ="Quote_2"/>
    </Quotation>
```

#### B.2.3.2 Print Provider sends a superseding **Quotation** by referencing **Quotation** "Quotation\_1"

```
<?xml version="1.0" encoding="UTF-8"?>
<!--TBD Placeholder -->

    <Quotation BusinessID="Quotation_2" BusinessRefID="RFQ_1" ReplaceID="Quotation_1">
        <Quote QuoteID="Quote_1">
    </Quotation>
```

## B.3 ReorderId

This section illustrates the @*ReorderId*. A *Print Buyer* or *Print Provider* uses a @*ReorderId* to place orders of one or more previously sent **PurchaseOrder** *Business Objects* for which the *Print Provider* has also sent a **Confirmation**. In all three examples below "old\_PO\_ID\_1" and "old\_PO\_ID\_2" refer to confirmed **PurchaseOrder** *Business Objects*.

### B.3.1 Print Buyer Reorders via an RFQ

#### B.3.1.1 Print Buyer sends an **RFQ** to start the reorder process with "old\_PO\_ID\_1" and "old\_PO\_ID\_2"

**Note:** "Master\_PO\_ID" could be a contract reference and not require reference to the previous purchase orders.

```
<?xml version="1.0" encoding="UTF-8"?>
<!--TBD Placeholder -->

    <RFQ BusinessID="RFQ_10" ReorderId="Master_PO_ID">
```

### B.3.2 Print Buyer Reorders via a PurchaseOrder

#### B.3.2.1 Print Buyer sends a **PurchaseOrder** to reorder "old\_PO\_ID\_1" and "old\_PO\_ID\_2"

```
<?xml version="1.0" encoding="UTF-8"?>
<!--TBD Placeholder -->

    <PurchaseOrder BusinessID="PO_10" ReorderId="old_PO_ID_1 old_PO_ID_2">
```

## B.4 xjdf:XJDF/@JobID

The *xjdf:XJDF/@JobID* is the ID of the job within the *Print Providers* workflow system.

When an **XJDF** is created by a *Print Buyer*, e.g. in an **RFQ**, then the *xjdf:XJDF/@JobID* SHOULD be specified. If a *Print Provider* cannot maintain an external @*JobID*, the @*JobID* SHOULD be copied to *xjdf:CustomerInfo/@CustomerOrderID*.

All interactions between the *Print Buyer* and *Print Provider* SHALL be based on the initial @*JobID* as specified by the *Print Buyer*.

**Note:** This implies that the `xjdf:XJDF/@JobID` within a production job of the *Print Provider's* workflow system NEED NOT be identical to `xjdf:XJDF/@JobID` when communicating with the *Print Buyer*.

## B.5 `xjdf:CustomerInfo/@CustomerOrderID`

The `xjdf:CustomerInfo/@CustomerOrderID` is the ID of the job in the context of *Print Buyer's* MIS or ERP system.

# C References

Throughout this specification references to other documents are indicated by short symbolic names inside square brackets, (e.g., ▶ [ISO8601]). Implementers need to read and conform to such referenced documents when implementing a part of this specification with such a reference. The reader is directed to this section to find the full title, date, source and availability of all such references.

Table C.1: References

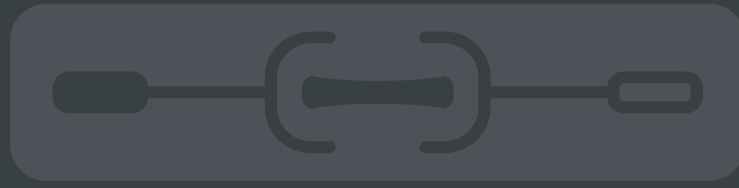
TERM	DEFINITION
<b>[cXML 1.2]</b>	<i>cXML Reference Guide, version 1.2</i> Date: April 2013 Produced by: cXML Organization Available at: <a href="http://cxml.org/files/downloads.html">http://cxml.org/files/downloads.html</a>
<b>[DUNS]</b>	The Data Universal Numbering System or D-U-N-S number is a unique nine-digit identifier for businesses. Produced by: Dun & Bradstreet Available at: <a href="https://www.dnb.com/">https://www.dnb.com/</a>
<b>[ISO4217:2001]</b>	<i>ISO 4217:2001</i> <i>Codes for the representation of currencies and funds</i> Date: 2001 Produced by: ISO Available at: <a href="https://www.iso.org/store.html">https://www.iso.org/store.html</a>
<b>[ISO8601]</b>	<i>ISO 8601:2004</i> <i>Data elements and interchange formats -- Information interchange -- Representation of dates and times.</i> Date: 2004 Produced by: ISO Available at: <a href="https://www.iso.org/store.html">https://www.iso.org/store.html</a>
<b>[RFC6068]</b>	<i>RFC 6068</i> <i>The mailto URL scheme</i> Date: October 2010 Produced by: Internet Engineering Task Force (IETF), Network Working Group Available at: <a href="http://www.rfc-editor.org/rfcsearch.html">http://www.rfc-editor.org/rfcsearch.html</a>
<b>[RFC6750]</b>	<i>RFC 6750</i> <i>The OAuth 2.0 Authorization Framework: Bearer Token Usage.</i> Date: October 2012 Produced by: Internet Engineering Task Force (IETF), Network Working Group Available at: <a href="http://www.rfc-editor.org/rfcsearch.html">http://www.rfc-editor.org/rfcsearch.html</a>
<b>[XJDF 2.0]</b>	<i>Exchange Job Definition Format</i> <i>Version 2.0</i> Date: January 2018 Produced by: CIP4 Organization Available at: <a href="http://www.cip4.org">http://www.cip4.org</a>
<b>[XML]</b>	<i>Extensible Markup Language (XML) 1.0 (Fifth Edition)</i> <i>Version (W3C Recommendation of 26 November 2008)</i> Date: 28 November 2008 Produced by: World Wide Web Consortium (W3C) Available at: <a href="http://www.w3.org/TR/2008/REC-xml-20081126/">http://www.w3.org/TR/2008/REC-xml-20081126/</a>

Table C.1: References

TERM	DEFINITION
<b>[XMLNS]</b>	<i>Namespaces in XML 1.0 (Third Edition)</i> <i>Version (W3C Recommendation of 8 December 2009)</i> Date: 8 December 2009 Produced by: World Wide Web Consortium (W3C) Available at: <a href="http://www.w3.org/TR/REC-xml-names/">http://www.w3.org/TR/REC-xml-names/</a>
<b>[ZIP]</b>	<i>File compression and archiving</i> <i>.ZIP File Format Specification - Version 6.3.4</i> Date: 1 October 2014 Produced by: PKWARE Inc. Available at: <a href="https://support.pkware.com/display/PKZIP/APPNOTE">https://support.pkware.com/display/PKZIP/APPNOTE</a>



# CIP4



# ORGANIZATION

INTEGRATION THROUGH COOPERATION



HEIDELBERG



**Kodak**



**RICOH**



[cip4.org](http://cip4.org)